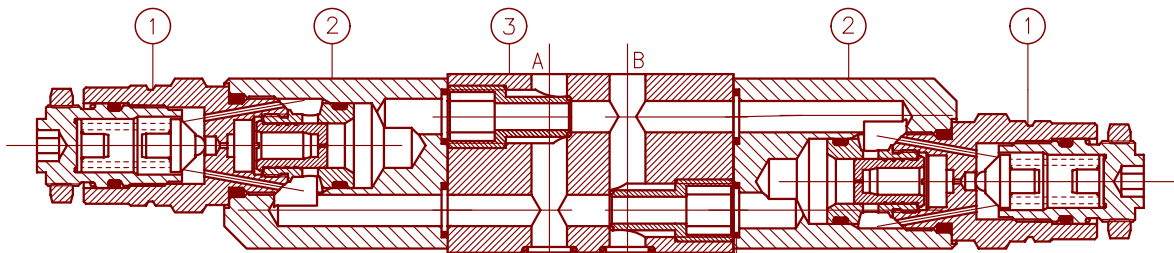


APPLICATION

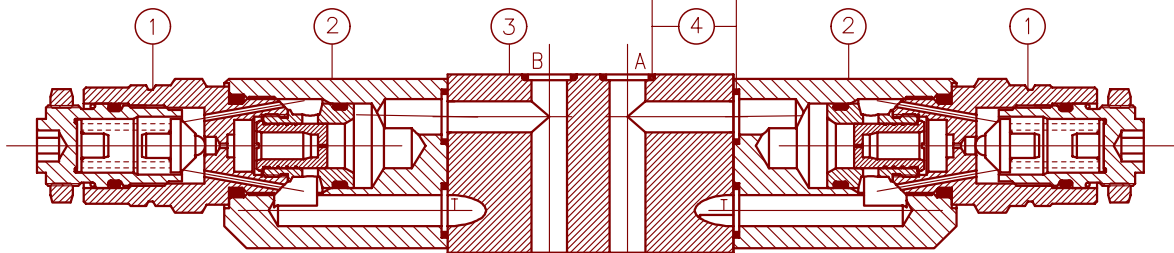
Sandwich plate pressure relief valves type UZPR 6 are used to limit pressure in hydraulic systems.



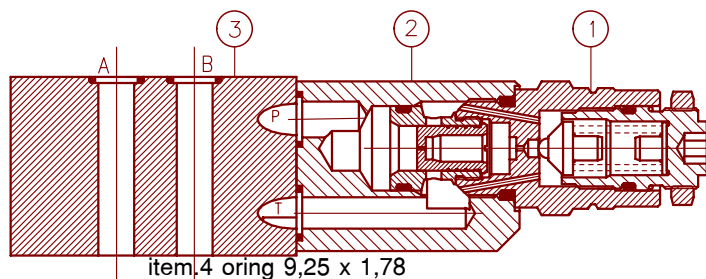
Construction ABBA



Construction ATBT



Construction PT



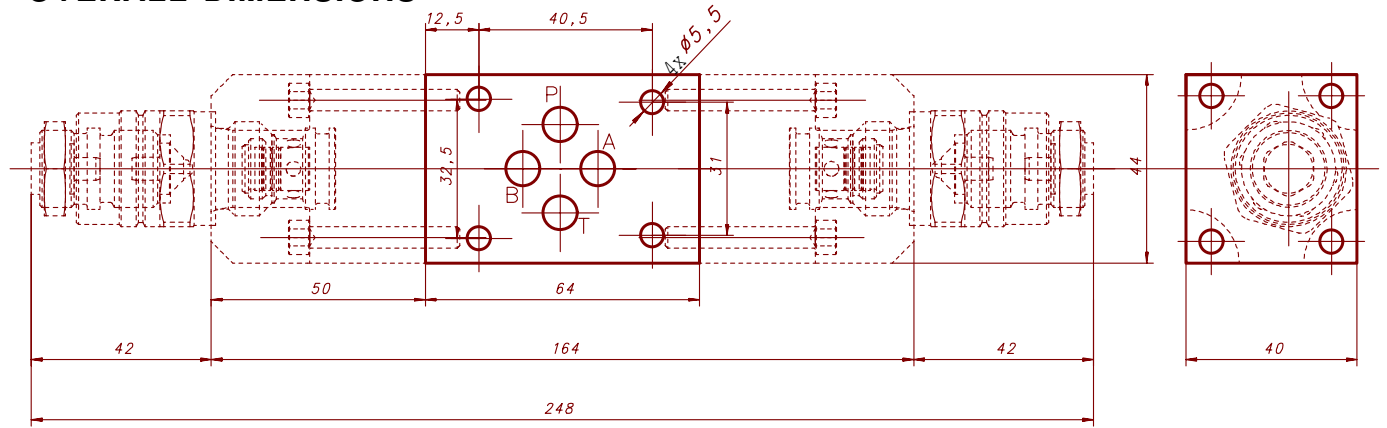
DESCRIPTION OF OPERATION

Pressure relief valve type UZPR 6 consists of the main block 3 and housing 2 in which the cartridge pressure relief valve 1 type UZPS 6 is installed. Due to providing a proper line from the main block, connections to hydraulic diagrams for certain version can be made.

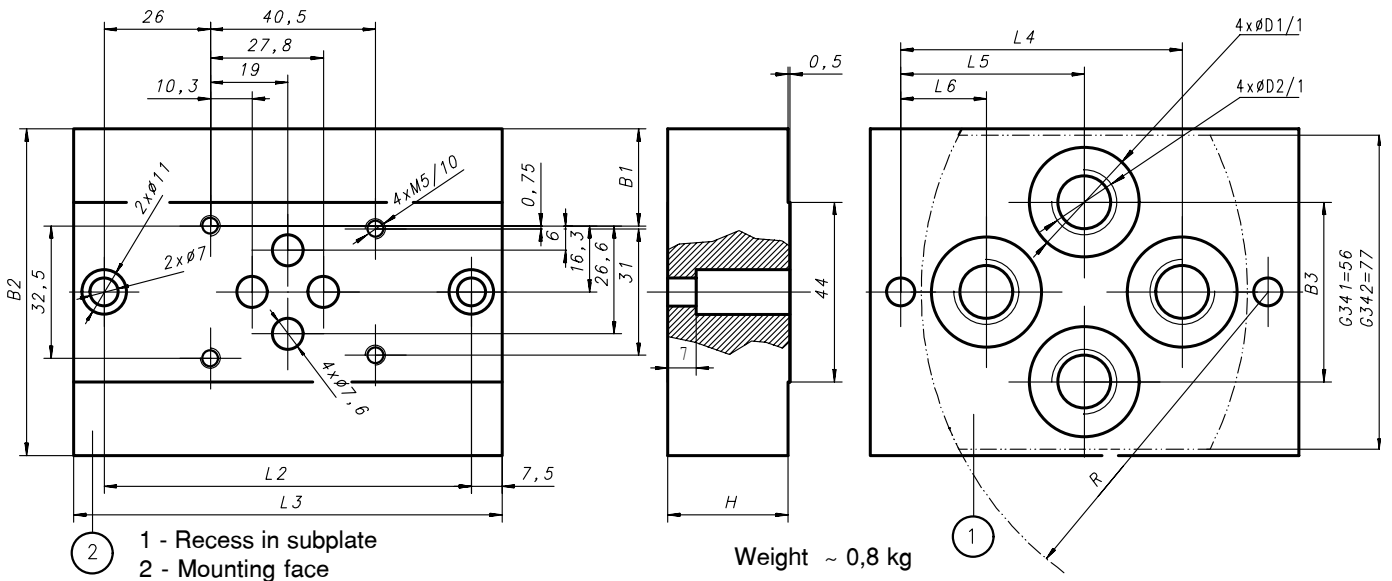
TECHNICAL DATA

Working medium	Mineral oil
Nominal viscosity	37 mm ² /s at temp. 328 K
Viscosity range	up 2,8 to 380 mm ² /s
Working temperature (in tank)	up 313 to 328 K
Temperature range	up 243 to 343 K
Pressure range	5 MPa; 10 MPa; 20 MPa; 29 MPa
Max pressure set	29 MPa
Required fluid filtration	16 mm
Recommended fluid filtration	10 mm
Max admissible flow	60 dm ³ /min.
Weight related to version	~ 1,5 kg; ~ 2,2 kg

OVERALL DIMENSIONS



CONNECTION DIMENSIONS FOR SUBPLATE

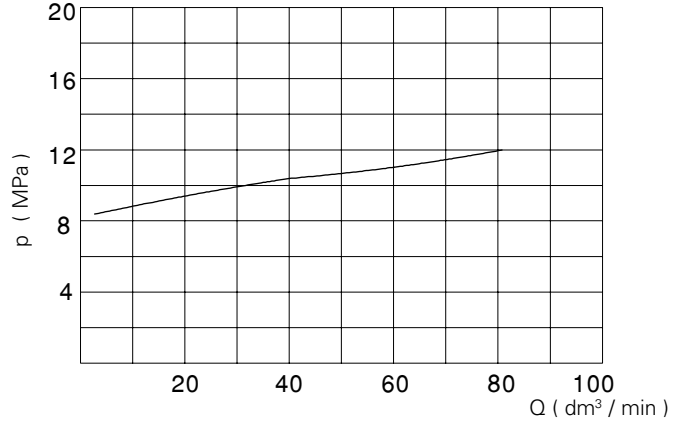
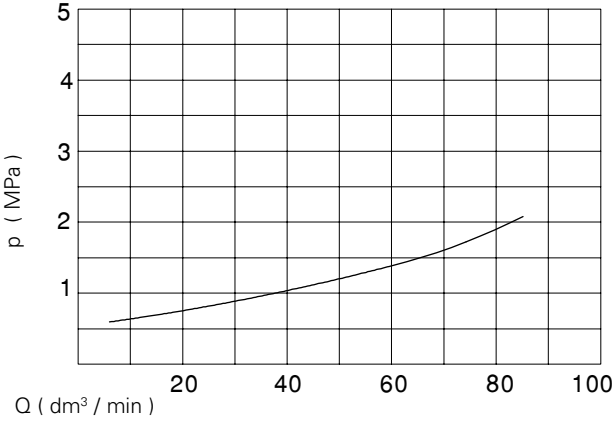


Type	B1	B2	B3	L1	L2	L3	L4	L5	L6	H	D1	D2	R	T
G341 / 01	12,- 7	58	34	21	80	95	55	40	25	25	22	G ¹ / ₄	70	13
G342 / 01	23,- 7	80	44	26	90	105	69	45	21	30	28	G ³ / ₈	85	13
G341 / 02	12,- 7	58	34	21	80	95	55	40	25	25	22	M14 x 1,5	70	15
G342 / 02	23,- 7	80	44	26	90	105	69	45	21	30	27	M16 x 1,5	85	16

Fixing the valve to the subplate by means of 4 bolts
M5 x L - 10.9 PN-87/M-82302 (DIN 912) long
according to the number of mounted components.

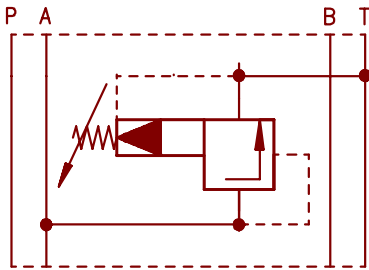
Tightening torque - 9 Nm.
Subplate and fixing bolts have to be ordered separately.

PERFORMANCE CURVES, measured at $\nu = 41 \text{ mm}^2/\text{s}$ and $T = 323 \text{ K}$

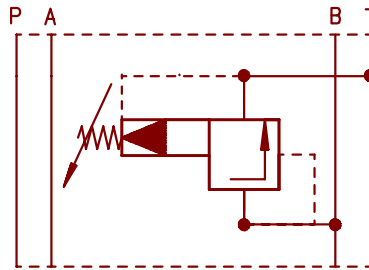


Operating pressure in relation to flow

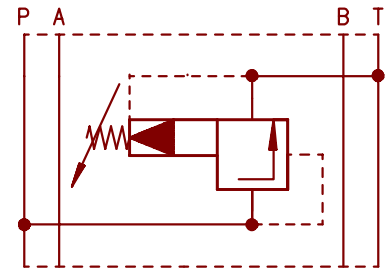
Graphical symbols



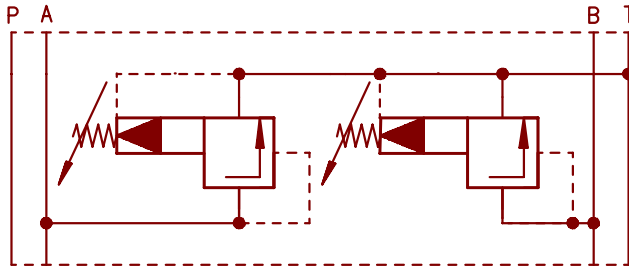
Construction AT



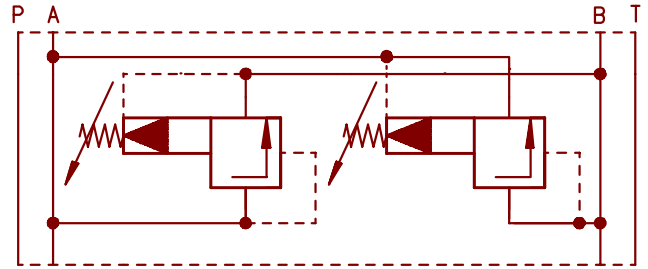
Construction BT



Construction PT



Construction ATBT



Construction ABBA

HOW TO ORDER

Orders coded in the way showed below should be forwarded to the manufacturer.

UZPR 6 - / - 2 - *

Series number	
22 = 22	
(22 - 29) - installation and connection dimensions remain unchanged	
Set pressure range	
up to 5 MPa = 50	
up to 10 MPa = 100	
up to 20 MPa = 200	
up to 29 MPa = 290	
Adjustment	
Internal hexagon bolt	=2
Connections to diagram	
Relief function from A to T	= AT
Relief function from B to T	= BT
Relief function from P to T	= PT
Relief function from A to B and B to A	= ABBA
Sealing	
Rubber	= no code
Viton	= V
Further requirements in clear text (to be agreed upon with the manufacturer)	

Coding example: UZPR 6 22/50 2 ATBT-V

PONAR WADOWICE S.A.
ul. Wojska Polskiego 29
34-100 Wadowice
tel. 033/ 823 39 43, 823 30 41
fax 033/ 873 48 80
e-mail: ponar@ponar-wadowice.pl

