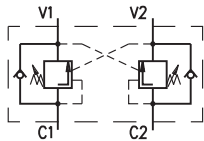


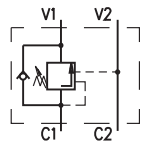
DESCRIPTION

✓ "OVERCENTER" valves with internal pilot operation for pipe mounting- OWC-...E/L...
 ✓ The "OVERCENTER" valves are designed to control moving loads and to prevent loads from running ahead of pump. They lock the load at any position without drift and protect of overloading and thermal expansion by open center control valves.

SYMBOL

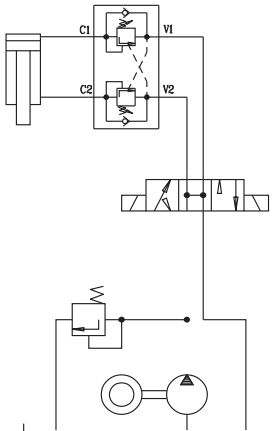


OWC-DE/L...

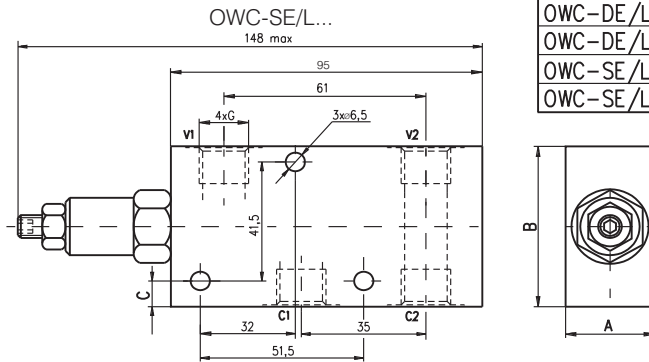
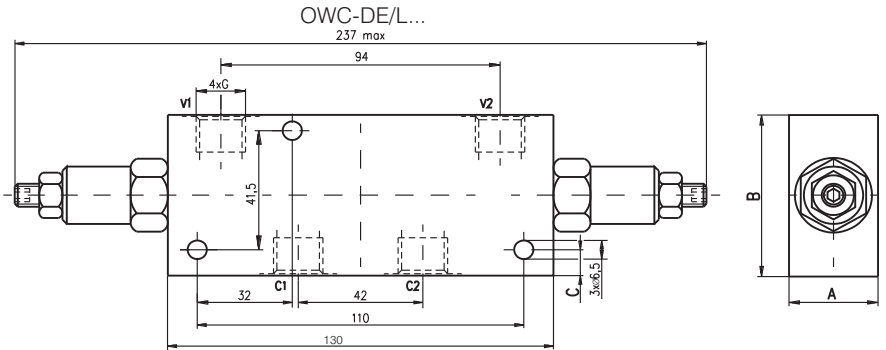


OWC-SE/L...

APPLICATIONS



DIMENSIONS



TYPE	G	mm		
		A	B	C
OWC-DE/L38	G3/8"	30	56	9
OWC-DE/L12	G1/2"	38	65	13,5
OWC-SE/L38	G3/8"	30	56	9
OWC-SE/L12	G1/2"	38	65	13,5

ORDERING CODE

OWC - *** E/L ***

"OVERCENTER"

Number of valves: double - D
 single - S

Modification

Connecting threads: G3/8 - 38
 G1/2 - 12

TECHNICAL DATA

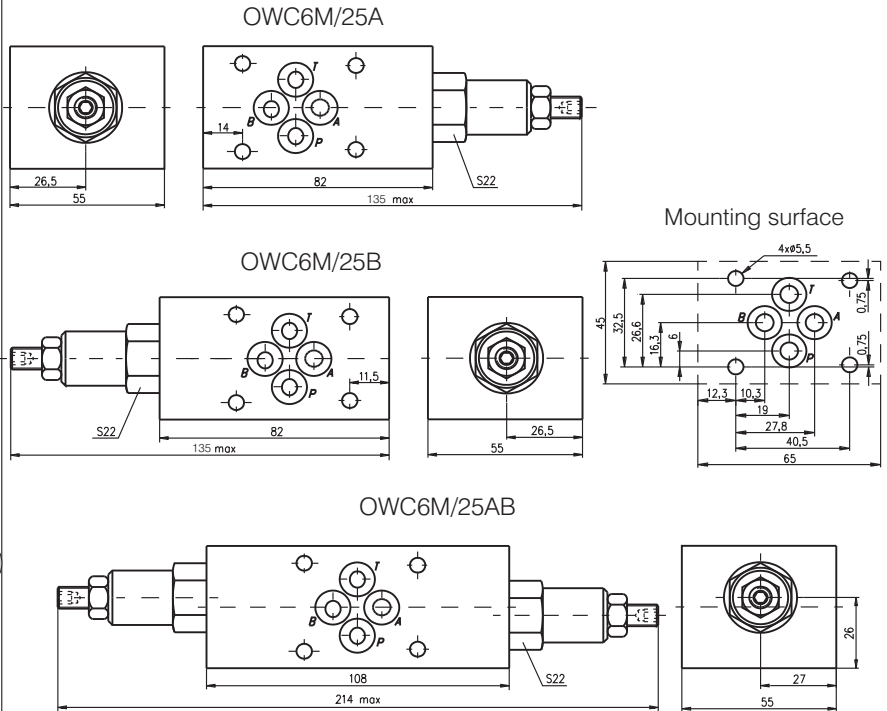
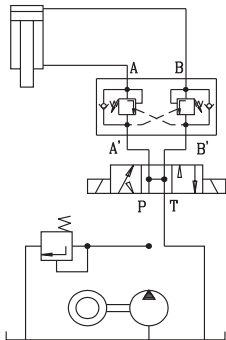
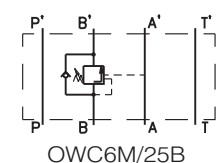
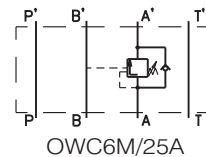
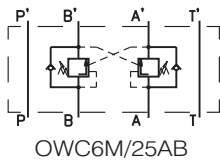
Rated pressure	40...250 bar
Rated flow	for all types 35 l/min
Pressure ratio P_w/P_p (work/pilot)	for all types 4/1
Working liquid-hydraulic oils with characteristics:	
-viscosity	10...400 cSt
-degree of filtration	0,025 mm
-temperature	-20...+80°C

DESCRIPTION

✓ "OVERCENTER" valves with internal pilot operation for modular mounting-OWC6M/25...

✓ The "OVERCENTER" valves are designed to control moving loads and to prevent loads from running ahead of pump. They lock the load in any position without drift and protect of overloading and thermal expansion by open center control valves.

✓ Mounting surface CETOP3 ; NG6

DIMENSIONS

APPLICATIONS

SYMBOL

ORDERING CODE

OWC	6	M	/	25	***
-----	---	---	---	----	-----

"OVERCENTER"

Nominal bore 6mm

Modular mounting

Rated pressure

up to 250 bar.

Valve position:

at line A - A

at line B - B

at line A&B - AB

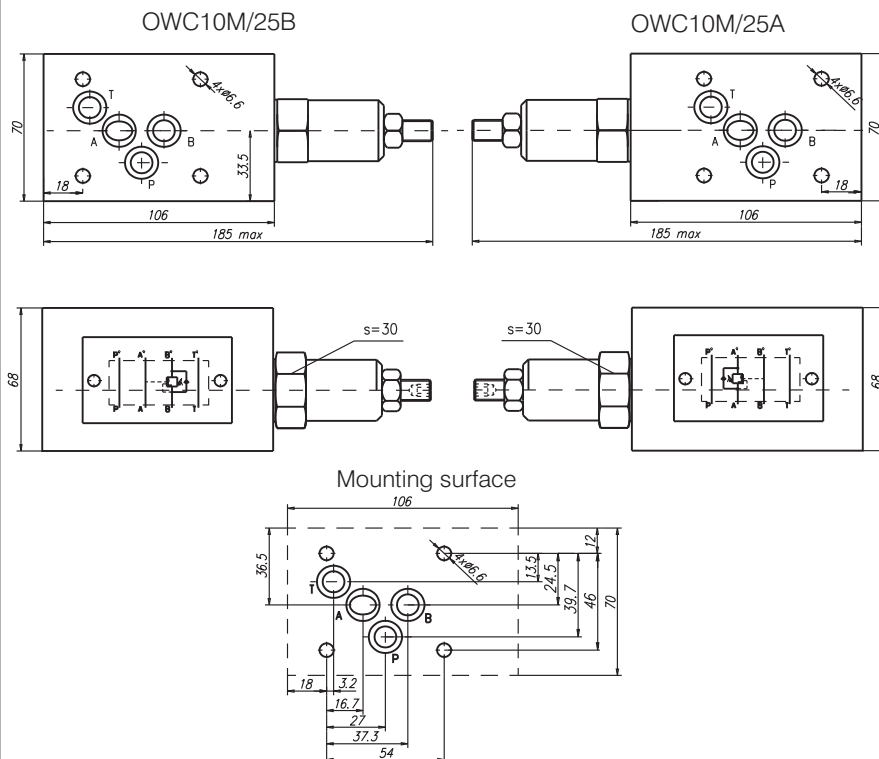
TECHNICAL DATA

Rated pressure		40...250 bar
Rated flow	for all types	20 l/min
Pressure ratio P_w/P_p (work/pilot)	for all types	4/1
Working liquid-hydraulic oils with characteristics:		
-viscosity		10...400 cSt
-degree of filtration		0,025 mm
-temperature		-20... +80°C

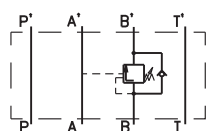
DESCRIPTION

✓ "OVERCENTER" valves with internal pilot operation for modular mounting-OWC10M/25...
 ✓ The "OVERCENTER" valves are designed to control moving loads and to prevent loads from running ahead of pump. They lock the load in any position without drift and protect of overloading and thermal expansion by open center control valves.
 ✓ Mounting surface CETOP5 ; NG10

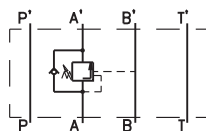
DIMENSIONS



SYMBOL



OWC10M/25B



OWC10M/25A

ORDERING CODE

OWC 10 M / 25 ***

"OVERCENTER"
 Nominal bore 10mm
 Modular mounting

Rated pressure up to 250 bar.

Valve position: at line A - A
 at line B - B

TECHNICAL DATA

Rated pressure	40...250 bar
Rated flow	for all types 80 l/min
Pressure ratio P_w/P_p (work/pilot)	for all types 4,2/1
Working liquid-hydraulic oils with characteristics:	
-viscosity	10...400 cSt
-degree of filtration	0,025 mm
-temperature	-20...+80°C