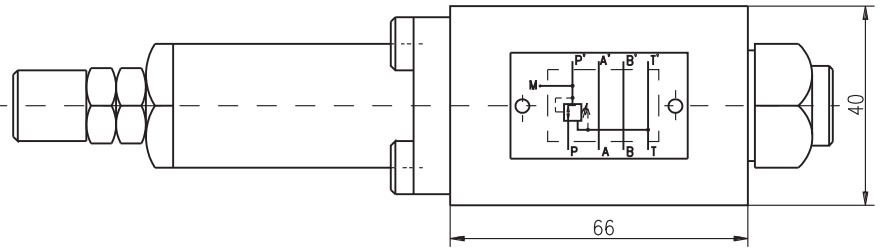
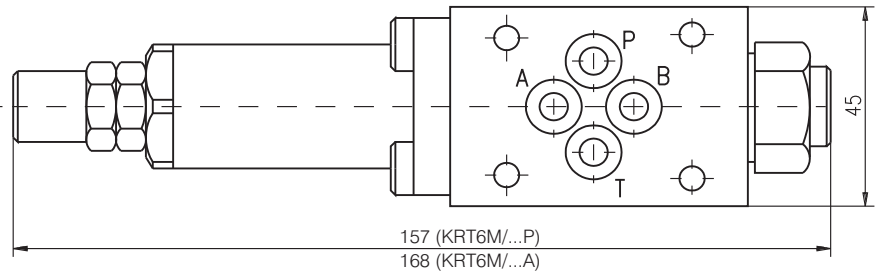


**DESCRIPTION**

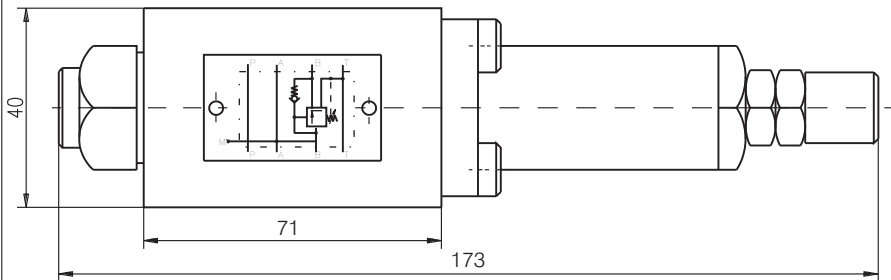
- ✓ Pressure reducing valves for modular mounting-KRT6M/...
- ✓ The pressure reducing valves are used to limit the pressure in the separate sections of the hydraulic systems where constant pressure is achieved (at element outlet) lower than the inlet pressure and independent of its changing.
- ✓ Mounting surface CETOP3 ; NG6

**DIMENSIONS**

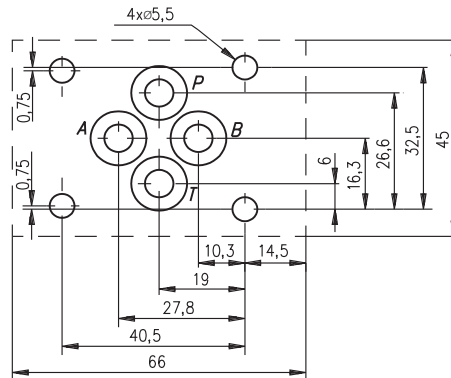
KRT6M/...P (KRT6M/...A)



KRT6M/...B

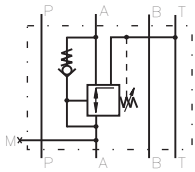


**Mounting surface**

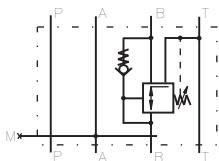


**SYMBOL**

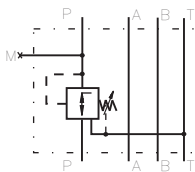
**ORDERING CODE**



KRT6M/10A



KRT6M/10B



KRT6M/...P

KRT	6	M	/	***	***
-----	---	---	---	-----	-----

Pressure reducing valve

Nominal bore 6mm.

Modular mounting

Rated pressure: up to 16 bar.-1,6  
up to 100 bar.-10

Function - at line P to P' - P  
at line A' to A - A  
at line B' to B - B

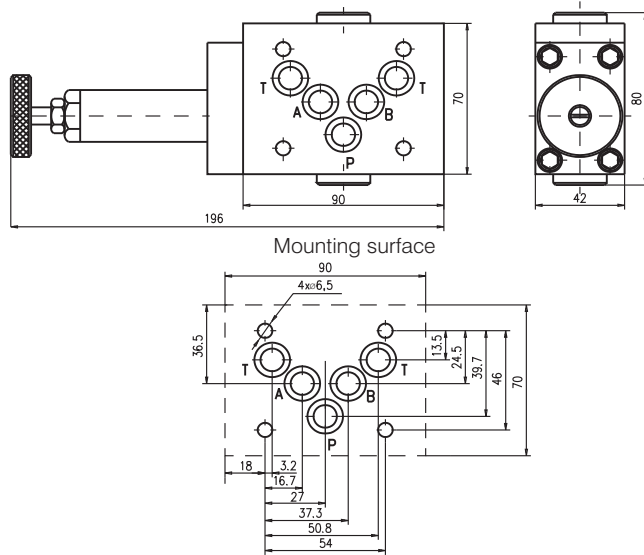
**TECHNICAL DATA**

Weight	1,165 kg
Max. Pressure	100 bar
Rated flow ( $\Delta p=2,5$ bar.)	20 l/min
Adjustment of pressure reducing range:	
KRT6M/10P	Pr(P to P') 10...100 bar
	Pr(P to T) 20...100 bar
KRT6M/1,6P	Pr( to P') 0,8...16 bar
	Pr(P to T) 3...16 bar
KRT6M/10A	Pr(A' to A) 10...100 bar
	Pr(A to T) 20...100 bar
KRT6M/10B	Pr(B' to B) 10...100 bar
	Pr(B to T) 20...100 bar
Working liquid-hydraulic oils with characteristics:	
-viscosity	10...400 cSt
-degree of filtration	0,025 mm
-temperature	-20...+80°C

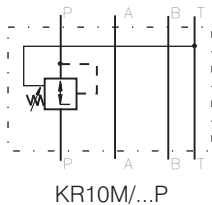
**DESCRIPTION**

- ✓ Pressure reducing valves for modular mounting-KR10M/...P
- ✓ The pressure reducing valves are used to limit the pressure in the separate sections of the hydraulic systems where constant pressure is achieved (at element outlet) lower than the inlet pressure and independent of its changing.
- ✓ Mounting surface CETOP5 ; NG10

**DIMENSIONS**



**SYMBOL**



**ORDERING CODE**

KR 10 M / \*\*\* P

- Pressure reducing valve
- Nominal bore 10mm.
- Modular mounting
- Rated pressure:
  - up to 100 bar.-10
  - up to 200 bar.-20
  - up to 200 bar.-32
- Function - at line P to P'-P

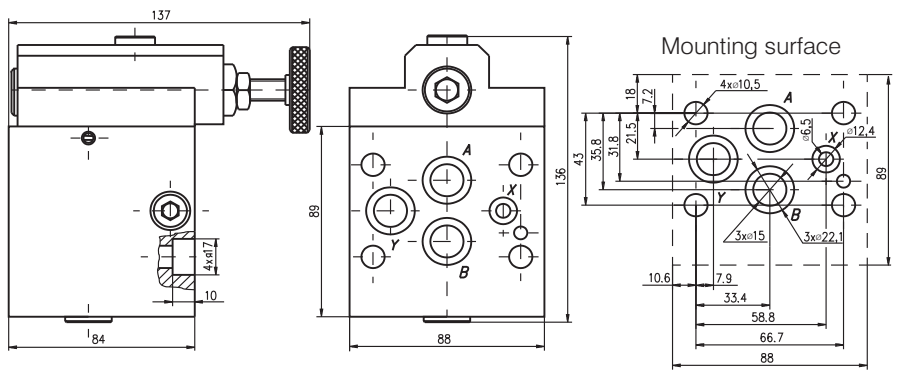
**TECHNICAL DATA**

Weight	1,165 kg
Max. Pressure	320 bar
Rated flow ( $\Delta p=2,5$ bar.)	40 l/min
Adjustment of pressure reducing range:	
KR10M/10P	Pr(P>P') 3...100 bar
KR10M/20P	Pr(P>P') 10...200 bar
KRT10M/32P	Pr(P>P') 20...320 bar
Working liquid-hydraulic oils with characteristics:	
-viscosity	10...400 cSt
-degree of filtration	0,025 mm
-temperature	-20... +80°C

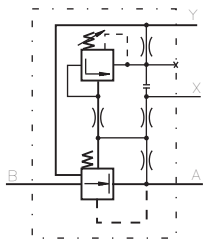
**DESCRIPTION**

✓ Pressure reducing valves for plate mounting-KRT10/...  
 ✓ The pressure reducing valves are used to limit the pressure in the separate sections of the hydraulic systems where constant pressure is achieved (at element outlet) lower than the inlet pressure and independent of its changing.

**DIMENSIONS**



**SYMBOL**



KRT10P/...

**ORDERING CODE**

KRT 10 P / \*\*\*

Pressure reducing valve

Nominal bore 10mm.

Plate mounting

Rated pressure: up to 100 bar.-10  
 up to 200 bar.-20  
 up to 320 bar.-32

**TECHNICAL DATA**

Weight	5,470 kg	
Max. Pressure	320 bar	
Rated flow ( $\Delta p=2,5$ bar.)	60 l/min	
KRT10P/10	Adjustment of pressure reducing range:	
	Pr(A>Y)	12...100
KRT10P/20	Pr(B>A)	8...100
	Pr(A>Y)	15...200
KRT10P/32	Pr(B>A)	8...200
	Pr(A>Y)	18...320
Working liquid-hydraulic oils with characteristics:	Pr(B>A)	8...320
	-viscosity	10...400 cSt
	-degree of filtration	0,025 mm
	-temperature	-20...+80°C