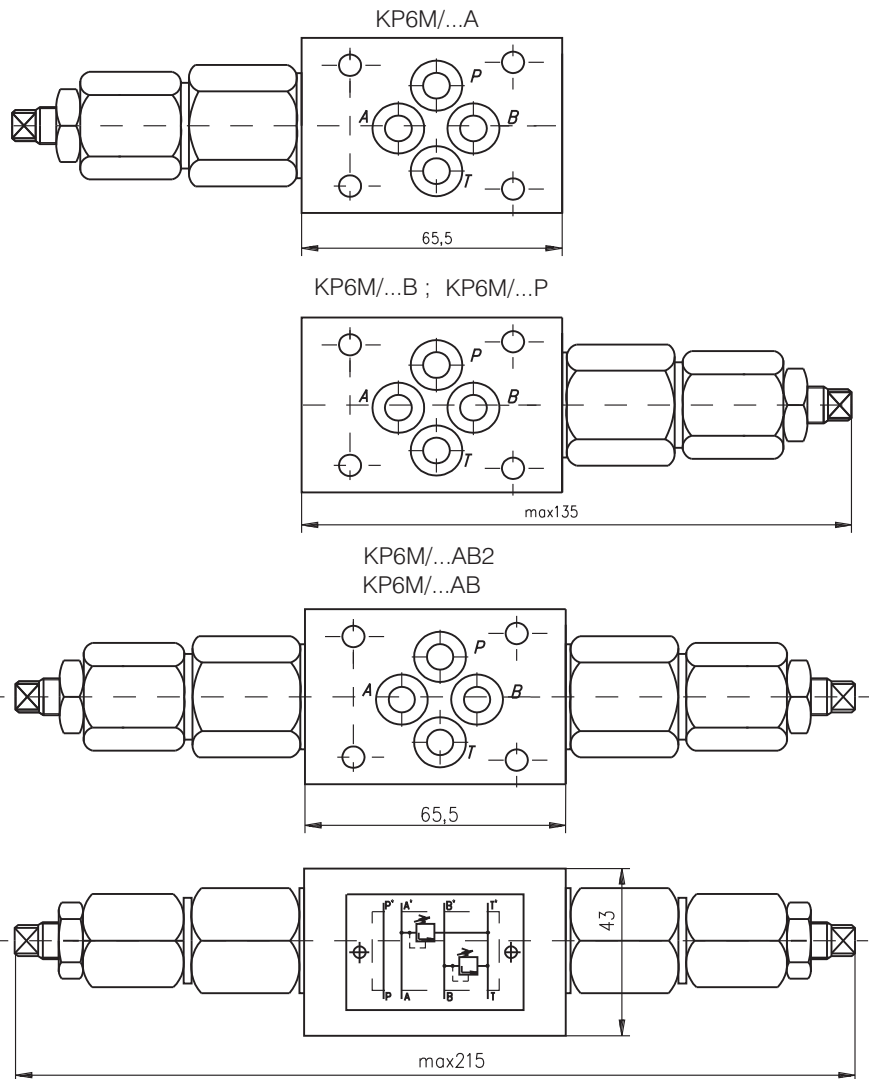
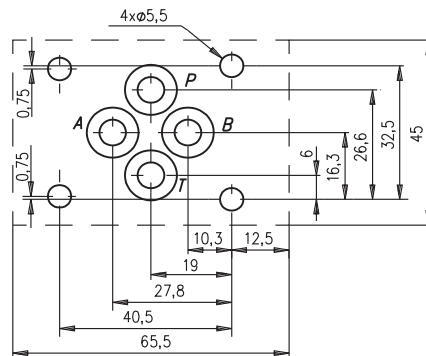


DESCRIPTION

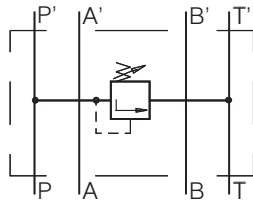
- ✓ Pressure relief valve with pilot operation.
- ✓ Adjustment of the pressure range at line A to T: KP6M/10A , KP6M/20A , KP6M/32A.
- ✓ Adjustment of the pressure range at line B to T: KP6M/10B , KP6M/20B , KP6M/32B.
- ✓ Adjustment of the pressure range at line P to T: KP6M/10P , KP6M/20P , KP6M/32P.
- ✓ Adjustment of the pressure range at line A&B to T: KP6M/10AB , KP6M/20AB , KP6M/32AB.
- ✓ Adjustment of the pressure range at line A to B&B to A: KP6M/10A , KP6M/20A , KP6M/32A.
- ✓ The pressure relief valve protects the hydraulic drives of overloading or damaging by limiting or maintaining a constant pressure. There is a possibility for the pressure range adjustment at a definite range.
- ✓ Mounting surface CETOP3 ; NG6

DIMENSIONS


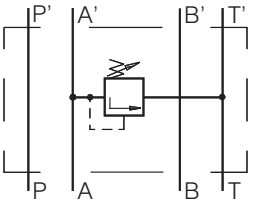
Mounting surface



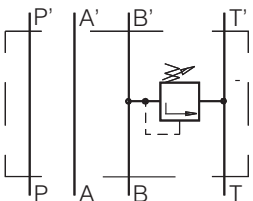
SYMBOL



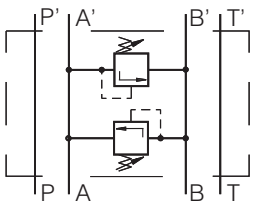
KP6M/...P



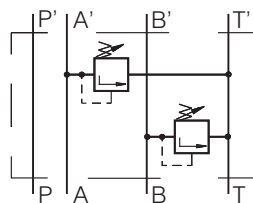
KP6M/...A



KP6M/...B



KP6M/...AB2



KP6M/...AB

ORDERING CODE

KP 6 M / *** - ***

Relief valve

Nominal bore 6mm.

Modular mounting

Rated pressure: up to 100 bar.-10
up to 200 bar.-20
up to 320 bar.-32

Function: at line A to T - A
at line B to T - B
at line P to T - P
at line A and B to T - AB
at line A to B & at B to A - AB2

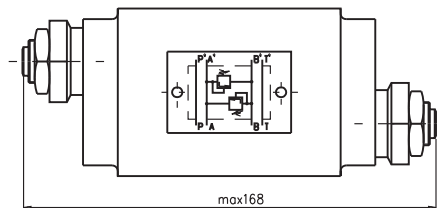
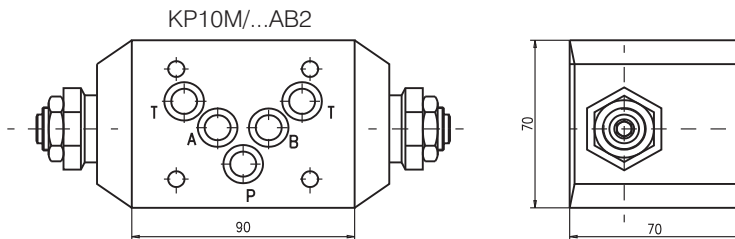
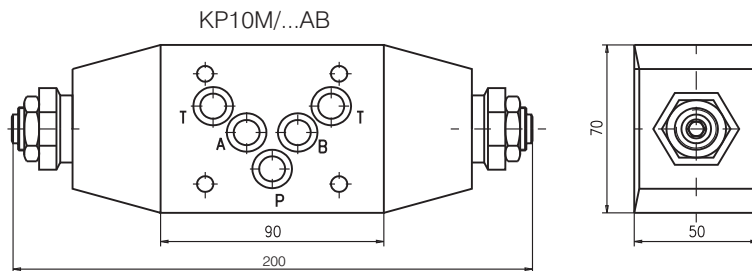
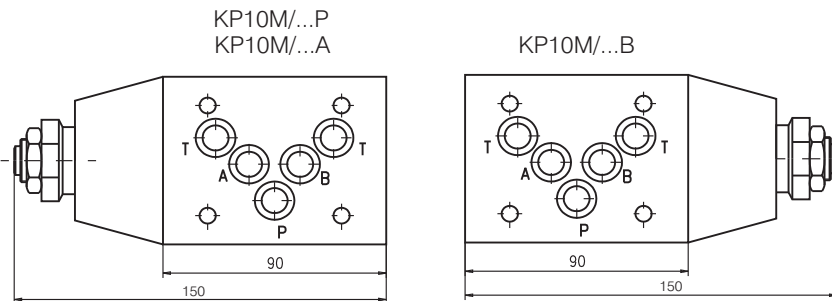
TECHNICAL DATA

Weight	with one relief valve	1,150kg
	with two relief valves	1,400 kg
Rated flow ($\Delta p=2,5$ bar.)		20 l/min
Adjustment of pressure range:		
KP6M/10P , KP6M/10A , KP6M/10B , KP6M/10AB , KP6M10AB2		5...100 bar
KP6M/20P , KP6M/20A , KP6M/20B , KP6M/20AB , KP6M20AB2		15...200 bar
KP6M/32P , KP6M/32A , KP6M/32B , KP6M/32AB , KP6M32AB2		20...300 bar
Working liquid-hydraulic oils with characteristics:		
-viscosity		10...400 cSt
-degree of filtration		0,025 mm
-temperature		-20...+80°C

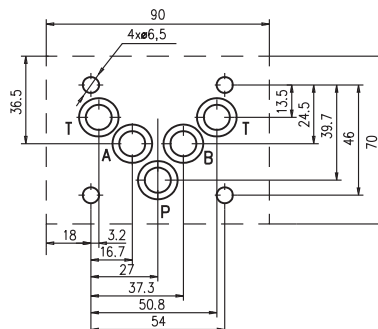
DESCRIPTION

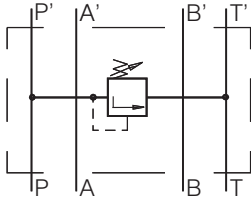
- ✓ Pressure relief valve with pilot operation.
- ✓ Adjustment of the pressure range at line A to T: KP10M/10A , KP10M/20A, KP10M/32A.
- ✓ Adjustment of the pressure range at line B to T: KP10M/10B , KP10M/20B, KP10M/32B.
- ✓ Adjustment of the pressure range at line P to T: KP10M/10P , KP10M/20P, KP10M/32P.
- ✓ Adjustment of the pressure range at line A&B to T: KP10M/10AB , KP10M/20AB , KP10M/32AB.
- ✓ Adjustment of the pressure range at line A to B&B to A: KP10M/10A , KP10M/20A , KP10M/32A.
- ✓ The pressure relief valve protects the hydraulic drives of overloading or damaging by limiting or maintaining a constant pressure. There is a possibility for the pressure range adjustment at a definite range.
- ✓ Mounting surface CETOP5 ; NG10

DIMENSIONS

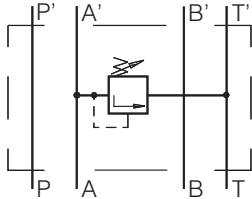


Mounting surface

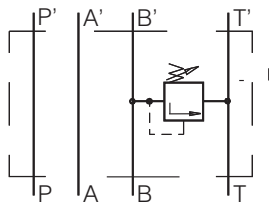


SYMBOL
ORDERING CODE


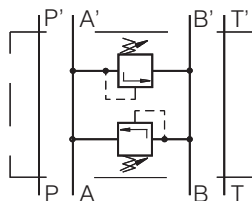
KP10M/...P



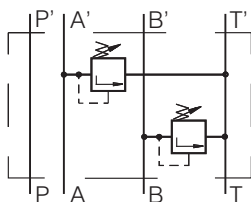
KP10M/...A



KP10M/...B



KP10M/...AB2



KP10M/...AB

KP	10	M	/	***	-	***
----	----	---	---	-----	---	-----

Relief valve

Nominal bore 10mm.

Modular mounting

 Rated pressure: up to 100 bar.-10
 up to 200 bar.-20
 up to 320 bar.-32

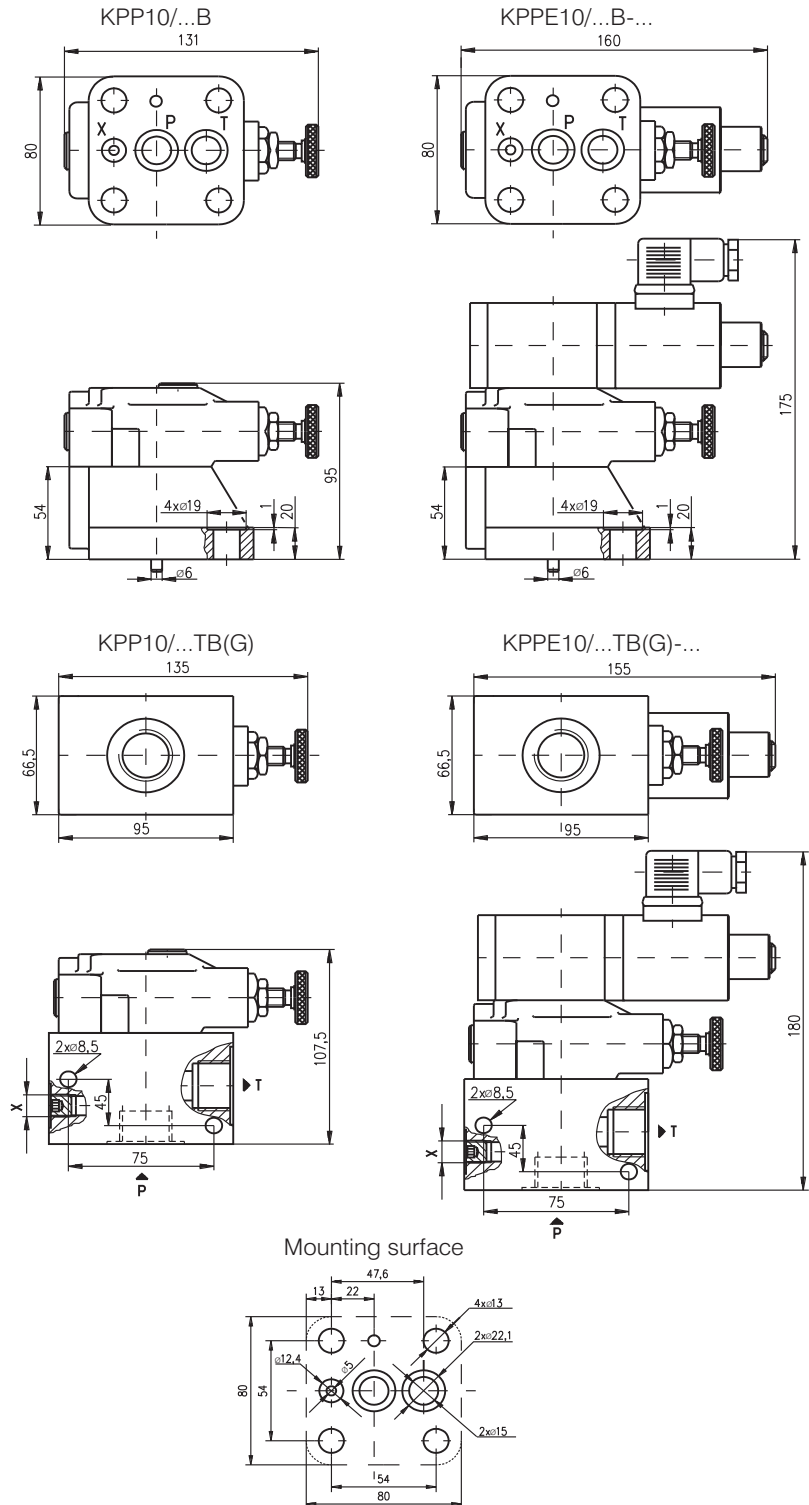
 Function: at line A to T - **A**
 at line B to T - **B**
 at line P to T - **P**
 at line A and B to T - **AB**
 at line A to B & at B to A - **AB2**
TECHNICAL DATA

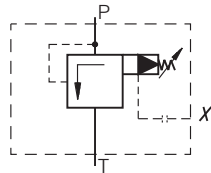
Weight	with one relief valve	2,700kg
	with two relief valves	3,050 kg
Rated flow ($\Delta p=2,5$ bar.)		40 l/min
Adjustment of pressure range:		
KP10M/10P , KP10M/10A , KP10M/10B , KP10M/10AB , KP10M/10AB2		5...100 bar
KP10M/20P , KP10M/20A , KP10M/20B , KP10M/20AB , KP10M/20AB2		15...200 bar
KP10M/32P , KP10M/32A , KP10M/32B , KP10M/32AB , KP10M/32AB2		20...320 bar
Working liquid-hydraulic oils with characteristics:		
	-viscosity	10...400 cSt
	-degree of filtration	0,025 mm
	-temperature	-20...+80°C

DESCRIPTION

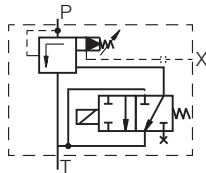
- ✓ Pressure relief valves-prefill type for plate mounting-KPP10/...B , KPPE10/...B-...
- ✓ Pressure relief valves-prefill type for pipe and plate mounting with pilot operation-KPP10/...B , KPP...10/...TB(G).
- ✓ Pressure relief valves-prefill type for pipe and plate mounting with pilot solenoid operation - KPPE10/...B-... , KPPE...10/...TB(G)-...
- ✓ The pressure relief valve protects the hydraulic drives of overloading or damaging by limiting or maintaining a constant pressure. There is a possibility for pressure range adjustment and they allow such an action even during work.

The unloading relief valve can be used when the system pressure is required to be automatically unloaded at reaching the adjusted pressure.

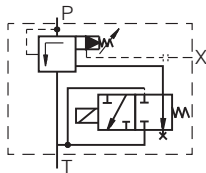
DIMENSIONS


SYMBOL


KPP10/...B
KPP10/...TB



KPPE10/...B-NO
KPPE10/...TB-NO
(normally open)



KPPE10/...B-NZ
KPPE10/...TB-NZ
(normally closed)

ORDERING CODE

KPP *** 10 / ***** - *** **

Relief valve prefill type

Type of control:
pilot operated -omit
pilot solenoid operated -E

Nominal bore 10mm.

Rated pressure: up to 100 bar.-10
up to 200 bar.-20
up to 320 bar.-32

Modification: for plate mounting -B
for pipe mounting(metric threads M27x1,5
for P & T line and M12x1,5 for X line) -TB
for pipe mounting(GAS threads G3/4"
for P&T line and G1/4" for X line) -TB(G)

Type of control valve:

solenoid valve normally open -NO
solenoid valve normally closed -NZ

Supply voltage 12VDC -12
24VDC -24
110VAC -110
220VAC -220

TECHNICAL DATA

Weight	KPP10/...B KPPE10/...B-... KPP10/...TB KPPE10/...TB-...	2,890 kg 4,600 kg 4,490 kg 6,200 kg
Max. pressure		320 bar
Rated flow ($\Delta p=2,5$ bar.)		160 l/min
Adjustment of pressure range:		
KPP10/10B , KPP10/10TB(G)		4...100 bar
KPP10/20B , KPP10/20TB(G)		10...200 bar
KPP10/32B , KPP10/32TB(G)		20...320 bar
KPPE10/10B-... , KPPE10/10TB(G)-...		4...100 bar
KPPE10/20B-... , KPPE10/20TB(G)-...		10...200 bar
KPPE10/32B-... , KPPE10/32TB(G)-...		20...320 bar

Working liquid-hydraulic oils with characteristics:

-viscosity 10...400 cSt
-degree of filtration 0,025 mm
-temperature -20...+80°C