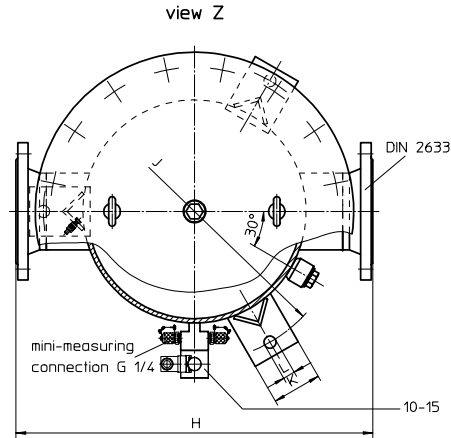
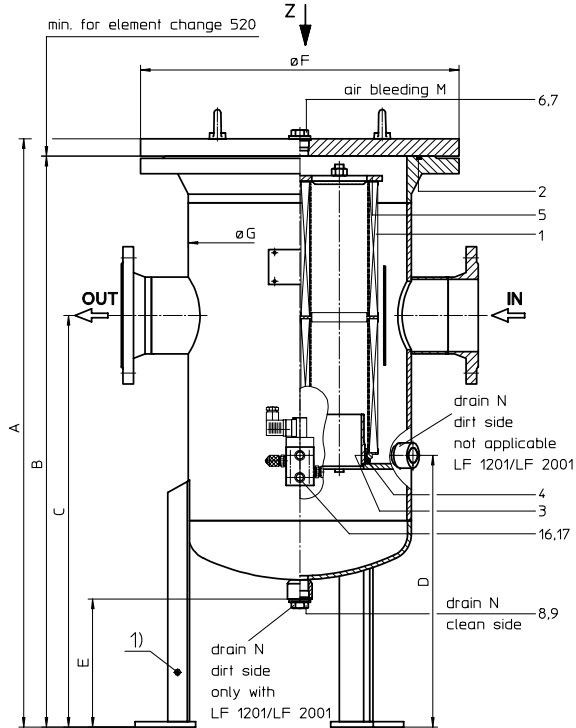


PRESSURE FILTER
Series LF 1201-10001 DN 50-250 PN 16

Sheet No.
1118 J



1) connection for the potential equalisation, only for application in the explosive area

3. Dimensions:

type	connection DN	A	B	C	D	E	F	G	H	J	K	L	M	N	weight kg	volume tank
LF 1201	50	1052	1028	400	-	188	340	219	412	330	70	18	G 1/2	G1	60	26,0 l
	65	1071	1047													27,0 l
	80	1052	1028													26,0 l
	100	1128	1104													29,0 l
LF 2001	65	1093	1067	425	-	186	405	273	494	380	70	18	G1	G1	110	43,5 l
	80	1112	1086													44,5 l
	100	1100	1074													43,5 l
	125	1188	1162													48,0 l
LF 2401	65	1018	990	700	445	183	460	324	600	450	70	18	G1	G1	130	55,0 l
	80															
	100															
	125															
LF 3601	80	1072	1040	750	495	238	580	406	650	550	90	22	G1	G1	260	90,0 l
	100															
	125															
	150															
LF 4801 LF 6001	100	1116	1080	800	535	232	715	508	800	650	90	22	G1	G1	310	145,0 l
	125															
	150															
	200															
LF 10001	125	1150	1110	800	570	283	910	711	1000	900	120	22	G1 1/2	G1 1/2	560	283,0 l
	150															
	200															
	250															

1. Type index:

1.1. Complete filter: (ordering example)

LF. 2001. 10VG. 10. E. P. -. FD1. 9. -. AE

1	2	3	4	5	6	7	8	9	10	11
---	---	---	---	---	---	---	---	---	----	----

- 1 series:
LF = in-line filter
- 2 nominal size: 1201, 2001, 2401, 3601, 4801, 6001, 10001
- 3 filter material and filter fineness:
80 G = 80 µm, 40 G = 40 µm, 25 G = 25 µm stainless steel wire mesh,
25 VG = 20 µm_(c), 16 VG = 15 µm_(c), 10 VG = 10 µm_(c), 6 VG = 7 µm_(c), 3 VG = 5 µm_(c) Interpor fleece (glass fibre)
- 4 resistance of pressure difference for filter element:
10 = Δp 10 bar
- 5 filter element design:
E = without by-pass valve
S = with by-pass valve Δp 2,0 bar
- 6 sealing material:
P = Nitrile (NBR)
V = Viton (FPM)
- 7 filter element specification: (see catalog)
- = standard
VA = stainless steel
IS06 = see sheet-no. 31601
- 8 connection:
FD1 = flange connection DIN 2633, design C DIN 2526; FD2 = flange connection DIN 2633, design E DIN 2526
- 9 connection size:

DN	filter nominal size						
8 = 50	1201						
9 = 65	1201	2001	2401				
A = 80	1201	2001	2401	3601			
B = 100	1201	2001	2401	3601	4801	6001	
C = 125		2001	2401	3601	4801	6001	10001
D = 150				3601	4801	6001	10001
E = 200					4801	6001	10001
F = 250							10001

- 10 filter housing specification: (see catalog)
- = standard
IS06 = see sheet-no. 31605
- 11 clogging indicator or clogging sensor:
- = without
AE = visual-electrical, see sheet-no.1609
OP = visual, see sheet-no.1628; VS1 = electrical, see sheet-no.1607
OE = visual-electrical, see sheet-no 1628; VS2 = electrical, see sheet-no.1608

1.2. Filter element: (ordering example)

01E. 2001. 10VG. 10. E. P. -

1	2	3	4	5	6	7
---	---	---	---	---	---	---

- 1 series:
01E. = filter element according to INTERNORMEN factory specification
- 2 nominal size: 1201, 2001
- 3 - 7 see type index-complete filter

2. Accessories:

- measure-and bleeder -connection see sheet-no. 1650
- evacuation- and bleeder-connection see sheet-no. 1651
- counter flange see sheet-no. 1653
- lifting mechanism see sheet-no. 1661

Changes of measures and design are subject to alteration!



Friedensstrasse 41, 68804 Altlusheim, Germany

phone +49 - (0)6205 - 2094-0 e-mail sales@internormen.com
 fax +49 - (0)6205 - 2094-40 url www.internormen.com



4. Spare parts:

4.1. Depending on different series:

item	designation	qty.	dimension and article-no. LF 1201	dimension and article-no. LF 2001	qty.	dimension and article-no. LF 2401	qty.	dimension and article-no. LF 3601	qty.	dimension and article-no. LF 4801	qty.	dimension and article-no. LF 6001	qty.	dimension and article-no. LF 10001
1	filter element	1	01E.1201	01E.2001	2	01E.1201	3	01E.1201	4	01E.1201	3	01E.2001	5	01E.2001
2	O-ring	1	225 x 5	275 x 5	1	330 x 5	1	429 x 6	1	516 x 6	1	516 x 6	1	722 x 8
			308652 (NBR) 311473 (FPM)	307414 (NBR) 310288 (FPM)		303080 (NBR) 310275 (FPM)		308659 (NBR) 310273 (FPM)		301962 (NBR) 311474 (FPM)		301962 (NBR) 311474 (FPM)		308145 (NBR) 311805 (FPM)
3	O-ring	1	93 x 5	135 x 5	2	93 x 5	3	93 x 5	4	93 x 5	3	135 x 5	5	135 x 5
			307588 (NBR) 307589 (FPM)	306016 (NBR) 307045 (FPM)		307588 (NBR) 307589 (FPM)		307588 (NBR) 307589 (FPM)		306016 (NBR) 307045 (FPM)		306016 (NBR) 307045 (FPM)		306016 (NBR) 307045 (FPM)
4	O-ring	1	85 x 10	125 x 10	2	85 x 10	3	85 x 10	4	85 x 10	3	125 x 10	5	125 x 10
			304386 (NBR) 304541 (FPM)	304388 (NBR) 306006 (FPM)		304386 (NBR) 304541 (FPM)		304386 (NBR) 304541 (FPM)		304386 (NBR) 304541 (FPM)		304386 (NBR) 306006 (FPM)		304388 (NBR) 306006 (FPM)
5	spring	1	304414		-	-	-	-	-	-	-	-	-	-
	pressure plate	-	-		1	309851	1	313116	1	314718	1	313335	1	313062
6	screw plug	1	G ½	G 1	1	G1		1	G1		1	G 1 ½		
			309730	309732		309732	318556							
7	gasket	1	A 22 x 27	A 33 x 39	1	A 33 x 39		1	A 48 x 55		1	A 48 x 55		
			305564	308257		308257	309764							
8	screw plug	1	G1	G1	2	G1		2	G 1 ½		2	G 1 ½		
			309732	309732		309732	318556							
9	gasket	1	A 33 x 39	A 33 x 39	2	A 33 x 39		2	A 48 x 55		2	A 48 x 55		
			308257	308257		308257	309764							

4.2. Depending on the series:

item	qty.	designation	dimension	article-no.
10	1	clogging indicator, visual	OP	see sheet-no. 1628
11	1	clogging indicator, visual-electrical	OE	see sheet-no. 1628
12	1	clogging indicator, visual-electrical	AE	see sheet-no. 1609
13	1	clogging sensor, electrical	VS1	see sheet-no. 1607
14	1	clogging sensor, electrical	VS2	see sheet-no. 1608
15	2	O-ring	14 x 2	304342 (NBR) 304722 (FPM)
16	2	screw plug	G ¼	309734
17	2	gasket	A 14 x 18	306330

5. Description:

In-line filters of the series LF 1201-10001 are suitable for a working pressure up to 16 bar. Pressure peaks can be absorbed with a sufficient margin of safety.

The filter is in-line mounted. Inlet and outlet are on the same level. The filters can be installed as suction-filter, pressure-filter or return-line filter.

The filter element consist of star-shaped, pleated filter material which is supported on the inside by a perforated core tube and is bonded to the end caps with a high-quality adhesive. The flow direction is from outside to the inside. The particles are hold back on the outside. For cleaning (see special leaflet 21070-4 resp. 39448-4) the mesh element respectively to change the glass fibre element remove the cover and take out the element.

Filter finer than 40 µm should use throw-away elements made of paper or Interpor fleece (glass fibre). Filter elements as fine as 5 µm_(c) are available; finer filter elements on request.

INTERNORMEN-Filter elements are known as elements with a high intrinsic stability and an excellent filtration capability, a high dirt-retaining capacity and a long service life.

INTERNORMEN-Filter are suitable for all petroleum based fluids, HW-emulsions, most synthetic hydraulic fluids and lubrication oils.

Approvals according to TÜV, and the major „Shipyards Classification Societies“ D.N.V.; B.V.; G.L.; L.R.S.; R.I.N.A.; A.B.S.; P.R.S.;USS.R.S. and others are possible.

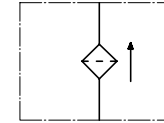
6. Technical data:

temperature range:	- 10°C to +80°C (for a short time +100°C)
operating medium:	mineral oil, other media on request
max. operating pressure:	16 bar
test pressure:	23 bar
connection system:	flange connection DIN 2633, 16 bar
housing material:	C-steel
sealing material:	Nitrile (NBR) or Viton (FPM), other materials on request
installation position:	vertical
mini-measuring connection:	G ¼

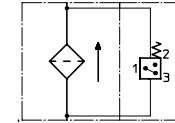
Classified under the Pressure Equipment Directive 97/23/EC for mineral oil (fluid group 2), Article 3, Para. 3.
Classified under ATEX Directive 94/9/EC according to specific application (see questionnaire sheet-no. 34279-4).

7. Symbols:

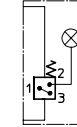
without indicator



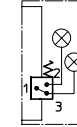
with electrical indicator
AE 30 and AE 40



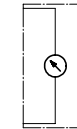
with visual -
electrical indicator
AE 50 and AE 62



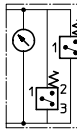
with visual -
electrical indicator
AE 70 and AE 80



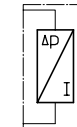
with visual
indicator
OP



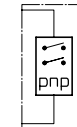
with visual -
electrical indicator
OE



with electrical
clogging sensor
VS1



with electrical
clogging sensor
VS2



8. Pressure drop flow curves:

Precise flow rates see 'INT-Expert-System Filter', respectively Δp-curves; depending on filter fineness and viscosity.

9. Test methods:

Filter elements are tested according to the following ISO standards:

ISO 2941	Verification of collapse/burst resistance
ISO 2942	Verification of fabrication integrity
ISO 2943	Verification of material compatibility with fluids
ISO 3723	Method for end load test
ISO 3724	Verification of flow fatigue characteristics
ISO 3968	Evaluation of pressure drop versus flow characteristics
ISO 16889	Multi-pass method for evaluating filtration performance