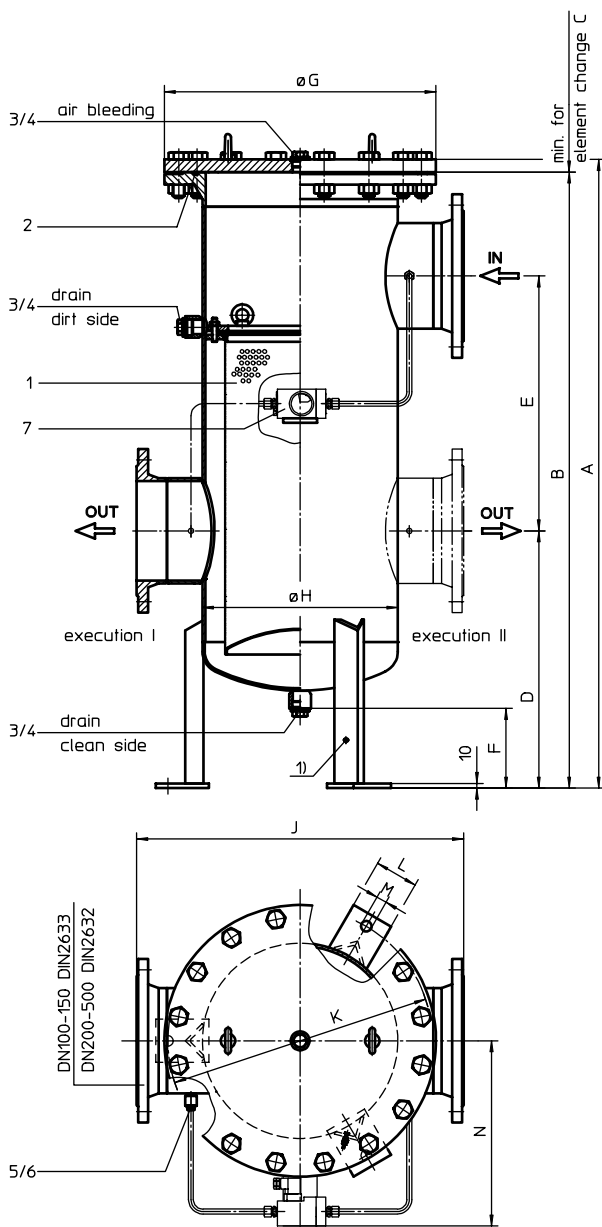


# COARSE FILTER

Series GFK 100-500 DN 100-500 PN 10

Sheet No.  
**3006 F**



1) connection for the potential equalisation, only for application in the explosive area

## 1. Type index:

### 1.1. Complete filter: (ordering example)

**GFK. 200. I. ST. 0,50G. P. FD11. E. OE**

1	2	3	4	5	6	7	8	9
---	---	---	---	---	---	---	---	---

- 1 **series:**  
GFK = coarse filter with strainer basket
- 2 **nominal size:** 100, 125, 150, 200, 250, 300, 350, 400, 500
- 3 **execution:**  
I = filter outlet according to I  
II = filter outlet according to II
- 4 **housing material:**  
ST = housing of steel  
VA = housing of stainless steel
- 5 **filter-material and filter-fineness:**  
0,25 G = 0,25 mm, 0,50 G = 0,50 mm, 0,75 G = 0,75 mm,  
1,00 G = 1,00 mm, 1,50 G = 1,50 mm stainless steel wire mesh
- 6 **sealing material:**  
P = Nitrile (NBR)  
V = Viton (FPM)
- 7 **connection:**  
FD1 = flange DIN 2633, form C DIN 2526 (DN100-150)  
FD2 = flange DIN 2633, form E DIN 2526 (DN100-150)  
FD11 = flange DIN 2632, form C DIN 2526 (DN200-500)  
FD12 = flange DIN 2632, form E DIN 2526 (DN200-500)
- 8 **connection size:**  
B = DN 100 (GFK100)      G = DN 300 (GFK300)  
C = DN 125 (GFK125)      H = DN 350 (GFK350)  
D = DN 150 (GFK150)      I = DN 400 (GFK400)  
E = DN 200 (GFK200)      K = DN 500 (GFK500)  
F = DN 250 (GFK250)
- 9 **clogging indicator:**  
- = without  
OE = clogging indicator, visual-electrical, see sheet-no. 1614  
DM = pressure difference gauge  
DKM = pressure difference gauge with contact

### 1.2. Strainer basket: (ordering example)

**Gr.06. 0,50. ST**

1	2	3
---	---	---

- 1 **size of strainer basket :** Gr. 02, Gr. 04, Gr. 06, Gr. 07
- 2 **filter-material and filter-fineness:**  
0,25 G = 0,25 mm, 0,50 G = 0,50 mm, 0,75 G = 0,75 mm,  
1,00 G = 1,00 mm, 1,50 G = 1,50 mm stainless steel wire mesh
- 3 **material of strainer basket:**  
ST = strainer basket of steel, wire mesh of stainless steel  
VA = strainer basket and wire mesh of stainless steel

## 2. Dimensions:

type	GFK 100	GFK 125	GFK 150	GFK 200	GFK 250	GFK 300	GFK 350	GFK 400	GFK 500
connection	DN 100	DN 125	DN 150	DN 200	DN 250	DN 300	DN 350	DN 400	DN 500
size of strainer basket	Gr. 02	Gr. 02	Gr. 04	Gr. 06	Gr. 06	Gr. 07	Gr. 04	Gr. 07	Gr. 04
Q = m³/h	90	110	192	288	440	630	850	1350	1350
filter surface m²	0,25	0,25	0,5	0,6	0,6	1,0	2,0	3,0	6,0
A	1021	1021	1556	1306	1366	1788	1865	2000	2100
B	995	995	1530	1280	1340	1760	1835	1960	2060
C	550	550	1050	700	700	1050	800	1130	1130
D	370	385	420	535	550	575	1005	1030	940
E	435	410	870	530	550	900	540	600	740
F	170	170	170	165	165	180	200	200	200
G	405	405	405	565	565	670	780	1115	1115
H	273	273	273	406	406	508	610	914	914
J	480	480	480	680	680	750	950	1300	1300
K	380	380	380	550	550	650	800	1130	1130
L	70	70	70	90	90	90	100	100	100
M	18	18	18	22	22	22	27	35	35
N	320	320	320	385	385	435	485	640	640
weight kg	95	97	130	200	210	320	630	1015	1350
volume tank	41 l	41 l	70 l	127 l	130 l	217 l	448 l	1097 l	1160 l

EDV 11/07

Changes of measures and design are subject to alteration !

**internormen**  
technology

Friedensstrasse 41, 68804 Altlusheim, Germany

phone +49 - (0)6205 - 2094-0  
fax +49 - (0)6205 - 2094-40

e-mail sales@internormen.com  
url www.internormen.com



### 3. Spare parts:

item	qty.	designation	dimension and article-no.								
			GFK 100	GFK 125	GFK 150	GFK 200	GFK 250	GFK 300	GFK 350	GFK 400	GFK 500
1	-	strainer basket	1x Gr.02		1x Gr.04	1x Gr.06		1x Gr.07	4x Gr.04	3x Gr.07	12x Gr.04
2	1	O-ring	275 x 5 307414 (NBR) 310288 (FPM)			429 x 6 308659 (NBR) 310273 (FPM)		516 x 6 301962 (NBR) 311474 (FPM)	620 x 6 328918 (NBR) 328919 (FPM)	920 x 10 328920 (NBR) 328921 (FPM)	
3	3	screw plug	G 1 309732						G 1 ½ 309749		
4	3	gasket	A 33 x 39 308257						A 48 x 55 309764		
5	2	screw plug	G ¼ 309734								
6	2	gasket	A 14 x 18 306330								
7	1	clogging indicator	OE, DM or DKM								

### 4. Description:

Coarse filters of the series GFK 100-500 are suitable for a working pressure up to 10 bar. Pressure peaks can be absorbed with a sufficient margin of safety. The filters can be installed as suction filter, pressure filter or return-line filter.

The filter elements are filter baskets with steel wire mesh as filter material. The perforated centre tube is layed out with steel wire mesh. The flow direction is from inside to the outside.

INTERNORMEN-Filter elements are known as elements with a high intrinsic stability and an excellent filtration capability, a high dirt-retaining capacity and a long service life.

INTERNORMEN-Filter are suitable for all petroleum based fluids, HW-emulsions, most synthetic hydraulic fluids and lubrication oils.

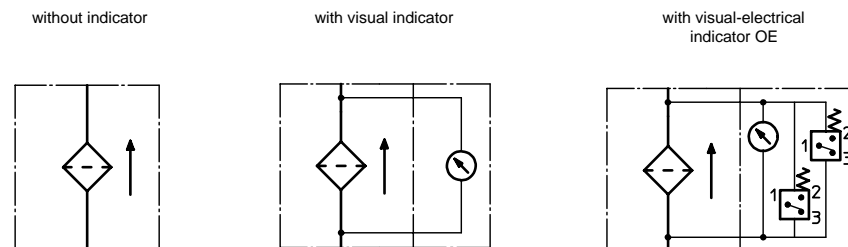
Approvals according to TÜV, and the major „Shipyard Classification Societies“ D.N.V.; B.V.; G.L.; L.R.S.; R.I.N.A.; A.B.S.; P.R.S.;USS.R.S. and others are possible.

### 5. Technical data:

temperature range:	- 10 °C bis + 80 °C (kurzzeitig + 100 °C)
operating medium:	mineral oil, other media on request
max. operating pressure:	10 bar
test pressure:	14,3 bar
connection system:	flange DIN 2633, 16 bar (DN100-150) flange DIN 2632, 10 bar (DN200-500)
housing material:	C-steel or stainless steel
sealing material:	Nitrile (NBR) or Viton (FPM), other materials on request
installation position:	vertical

Classified under the Pressure Equipment Directive 97/23/EC for mineral oil (fluid group 2), Article 3, Para. 3.  
Classified under ATEX Directive 94/9/EC according to specific application (see questionnaire sheet-no. 34279-4).

### 6. Symbols:



### 7. Pressure drop flow curves:

Precise flow rates see 'INT-Expert-System Filter', respectively  $\Delta p$ -curves; depending on filter fineness and viscosity