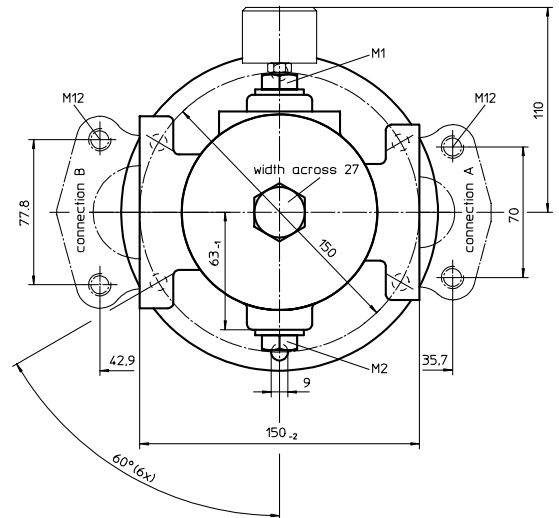
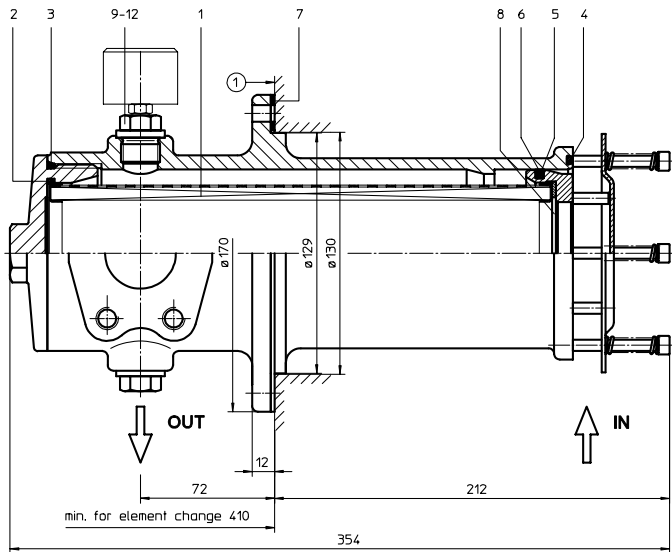


# SUCTION FILTER

## Series AS 220 DN 40 - 50

Sheet No.  
**1903 G**



### 1. Type index:

#### 1.1. Complete filter: (ordering example)

**AS. 220. 40G. -. B. P. -. FS. 8. -. O1. -**

1	2	3	4	5	6	7	8	9	10	11	12
---	---	---	---	---	---	---	---	---	----	----	----

- 1 | **series:**  
AS = suction filter
- 2 | **nominal size:** 220
- 3 | **filter-material and filter-fineness:**  
80 G= 80  $\mu$ m, 40 G= 40  $\mu$ m stainless steel wire mesh, other materials on request
- 4 | **resistance of pressure difference for filter element:**  
- = not specified
- 5 | **filter element design:**  
B = both sides open
- 6 | **sealing material:**  
P = Nitrile (NBR)  
V = Viton (FPM)
- 7 | **filter element specification:**  
- = standard  
VA = stainless steel
- 8 | **connection:**  
FS = SAE-flange connection 3000 PSI
- 9 | **no. of version:**

version	7	4	8
connection A type size	-	FS	FS
connection B type size	FS	-	FS
	8	-	8

type: FS = SAE-flange 3000 PSI  
size: - = no connection  
7 = 1 1/2 "  
8 = 2 "

- 10 | **filter housing specification:**  
- = standard
- 11 | **clogging indicator at M1:**  
- = without  
O1 = visual, see sheet-no. 1616  
E4-0,25 = pressure switch, see sheet-no. 1616
- 12 | **clogging indicator at M2:**  
possible indicators see position 11 of the type index

#### 1.2. Filter element: (ordering example)

**01AS. 220. 40G. -. B -. -**

1	2	3	4	5	6	7
---	---	---	---	---	---	---

- 1 | **series:**  
01AS. = suction filter element according to INTERNORMEN factory specification
- 2 | **nominal size:** 220
- 3 | - 5 |, 7 | see type index complete-filter
- 6 | **sealing material:**  
- = without

### 2. Accessories:

- counter flange see sheet-no. 1652

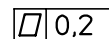
mounting area



surface quality



flatness tolerance



weight: approx. 4,5 kg

Changes of measures and design are subject to alteration!

EDV 11/07

**internormen**  
technology

Friedensstrasse 41, 68804 Altlusheim, Germany

phone +49 - (0)6205 - 2094-0  
fax +49 - (0)6205 - 2094-40

e-mail sales@internormen.com  
url www.internormen.com



### 3. Spare parts:

item	qty.	designation	dimension	article-no.	
1	1	filter element	01AS.220		
2	1	O-ring	75 x 3	302215 (NBR)	304729 (FPM)
3	1	O-ring	88 x 3	304417 (NBR)	310266 (FPM)
4	1	O-ring	96 x 4	305190 (NBR)	308148 (FPM)
5	1	O-ring	78 x 3,5	311610 (NBR)	314696 (FPM)
6	1	sliding ring	20165-4	305194	
7	1	gasket	2 thick	305135	
8	1	sliding ring	20164-4	305199	
9	2	screw plug	G ½	309730	
10	2	gasket	A 21 x 26	309815	
11	1	clogging indicator, visual	O1	see sheet-no. 1616	
12	1	clogging indicator, electrical	E4.-0,25	see sheet-no. 1616	

### 4. Description:

The filter housing consists of high quality aluminium material.

The filter element consists of a star-shaped pleated filter material which is supported on the inside by a perforated core tube and is bonded to the end caps.

INTERNORMEN-Filter elements are known as elements with a high intrinsic stability and an excellent filtration capability, a high dirt-retaining capacity and a long service life.

The AS-filters are horizontally or vertically mounted to the reservoir and connected directly to the suction-line.

Due to its practical design the suction filter is easy to service. When releasing the filter lid a plate valve closes the suction-inlet of the filter and prevents the return flow of dirt oil to the reservoir, respectively when mounted horizontally the flow out of the reservoir is prevented.

After the servicing respectively after changing the element the filter is again ready for operation.

According to the operating condition the filter could be equipped with different accessories (clogging indicators, counter flange etc.).

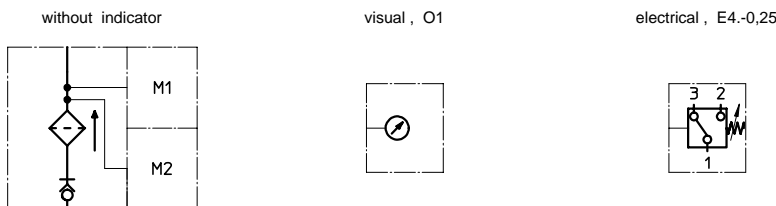
### 5. Technical data:

temperature range:	-10°C to +80°C (for a short time +100°C)
connection system:	SAE-flange connection 3000 PSI
installation position:	optional
housing material:	G-AlSi10Mgwa DIN 1725 (3.2381.61)
sealing material:	Nitrile (NBR) or Viton (FPM), other materials on request
usable for following fluids:	petroleum-based fluids, lubrication fluids; HW-emulsions and synthetic hydraulic fluids on request
volume tank:	1,6 l

Classified under the Pressure Equipment Directive 97/23/EC for mineral oil (fluid group 2), Article 3, Para. 3.

Classified under ATEX Directive 94/9/EC according to specific application (see questionnaire sheet-no. 34279-4).

### 6. Symbols:



**7. Pressure drop flow curves:** Precise flow rates see 'INT-Expert-System Filter', respectively  $\Delta p$ -curves; depending on filter fineness and viscosity.

**8. Test methods:** Filter elements are tested according to the following ISO standards:

ISO 2941	Verification of collapse/burst resistance
ISO 2942	Verification of fabrication integrity
ISO 2943	Verification of material compatibility with fluids
ISO 3723	Method for end load test
ISO 3724	Verification of flow fatigue characteristics
ISO 3968	Evaluation of pressure drop versus flow characteristics
ISO 16889	Multi-pass method for evaluating filtration performance