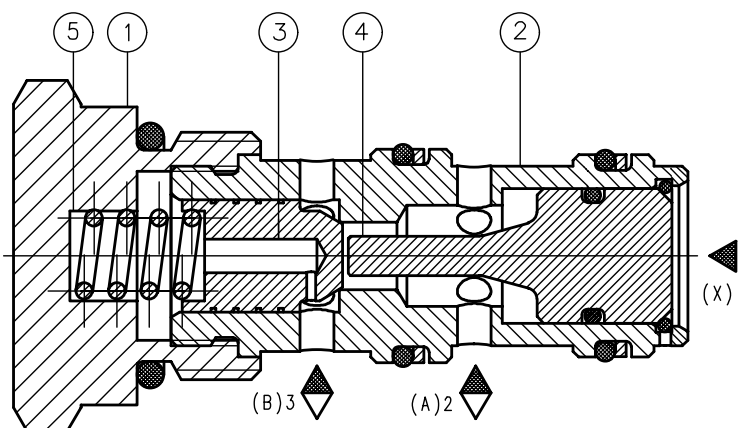


APPLICATION

Pilot check valves allow fluid to pass in one direction with low pressure drop, then prevent reverse flow until pilot pressure is applied.

There are many applications for this valve type, the most common being to lock and hold a cylinder or other hydraulic actuator in position.



DESCRIPTION OF OPERATION

Pressure at the valve port (A) causes the poppet (3) to lift against the spring force (5) allowing flow to the cylinder port (B).

Reverse flow is prevented by the check reseating.

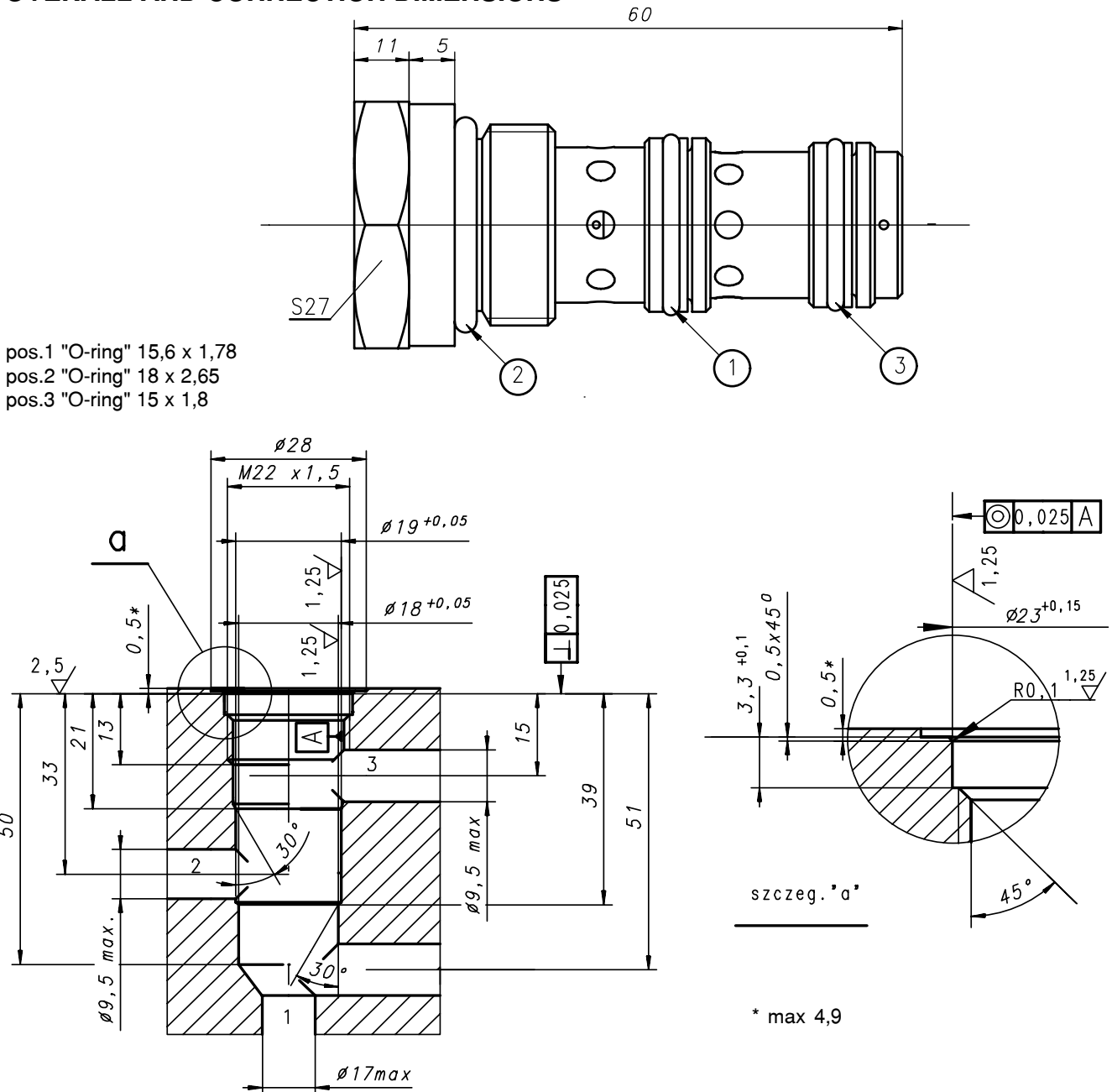
Pressure applied to the pilot port (X) will overcome the cylinder port pressure (B) and lift the piston (4) and poppet from its seat in sleeve (2) allowing return flow.

Return flow is possible as long as the pressure is active at the pilot port (X).

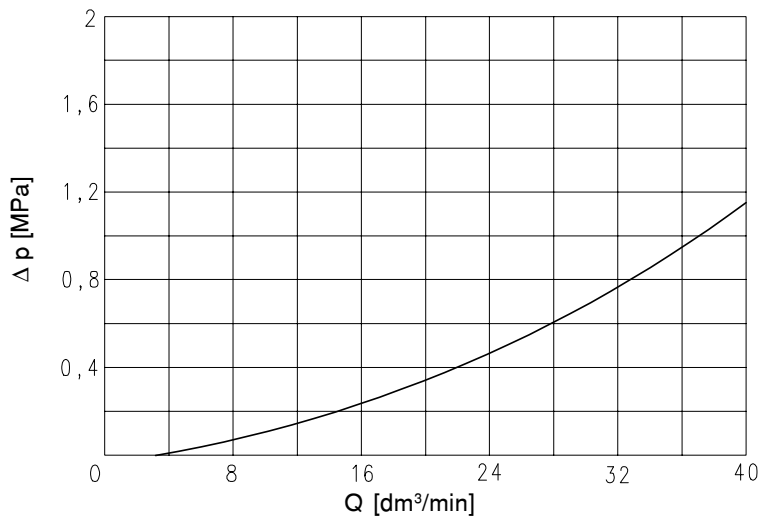
TECHNICAL DATE

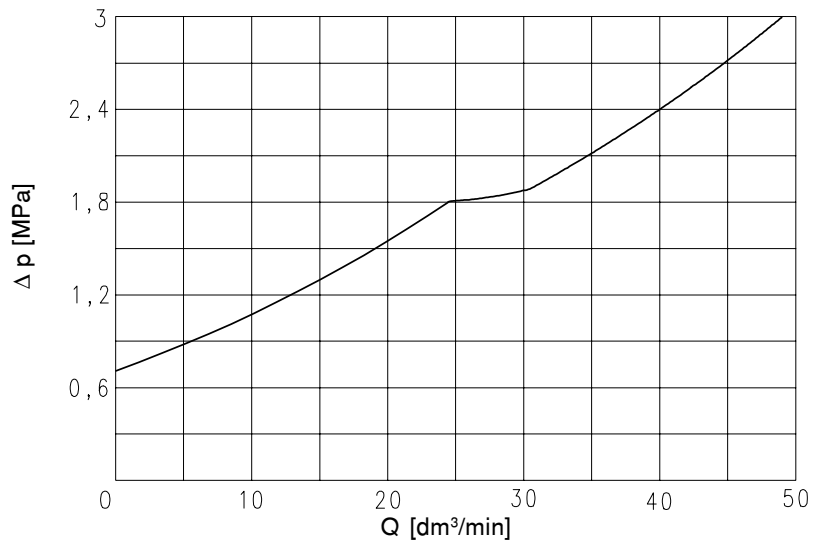
Working fluid	Mineral oil
Nominal fluid viscosity	37 mm ² /s at temperature 328 K (55 °C)
Viscosity range	2,8 up to 380 mm ² /s
Optimum working temperature range	313 up to 328 K (40 up to 55 °C)
Fluid temperature range	243 up to 343 K (-30 up to 70 °C)
Required fluid filtration	16 μm
Recommended fluid filtration	10 μm
Max working pressure	29 MPa
Cracking pressure	0,5 MPa
Area ratio (valv surface/piston surface)	1 : 3
Weight	~ 0,1 kg

OVERALL AND CONNECTION DIMENSIONS



PERFORMANCE CURVES at $v = 41 \text{ mm}^2/\text{s}$ and temp. 323 K

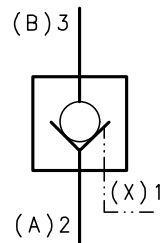




3 → 2

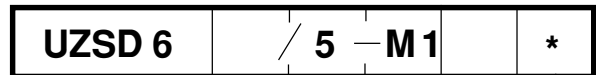
SYMBOL

UZSD 6 ...



HOW TO ORDER

Orders coded in the way showed below should be forwarded to the manufacturer



Series number	02 = 02
(00 - 09)	= installation and connection dimension unchanged

Cracking pressure	0,5 MPa = 5
--------------------------	-------------

Kind of cavity	Cavity M22x1,5 = M1
-----------------------	---------------------

Sealing	for fluids on mineral oil base = no designation
	for fluid on phosphate ester base = V

Further requirements to be added in text (to agree with the manufacturer)

CODING EXAMPLE:
UZSD 6 02/5 M1

PONAR WADOWICE S.A.
ul. Wojska Polskiego 29
34-100 Wadowice
tel. 033/ 823 39 43, 823 30 41
fax 033/ 873 48 80
e-mail: ponar@ponar-wadowice.pl

