

## APPLICATION

Pressure relief valve direct operated type UZPDE6 is used to limit pressure in a hydraulic circuit or its part. The valve is designed for cartridge mounting (screwed into a cavity). The relief is directly to a tank.

The basic version i.e. UZPDE6-02/210 is an equivalent to valve no 3401834m91 applied at the hydraulic circuit of a lift in URSUS tractor type 5312..., 5314..., 6012..., 6014..., set at pressure 21 MPa. The valve may have another application and as such should be coded as on page 4.

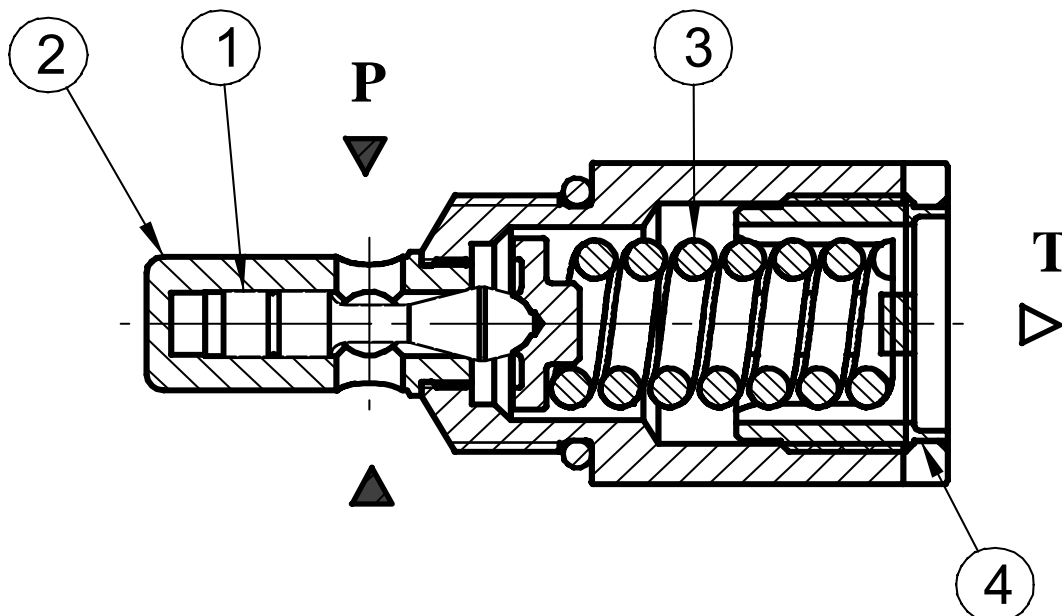


## DESCRIPTION OF OPERATION

Working element of the relief valve is a moveable poppet 1 which is held in neutral position in the housing 2 by a spring 3.

Opening pressure is set at the adjustment 4. The valve can be produced in two versions :

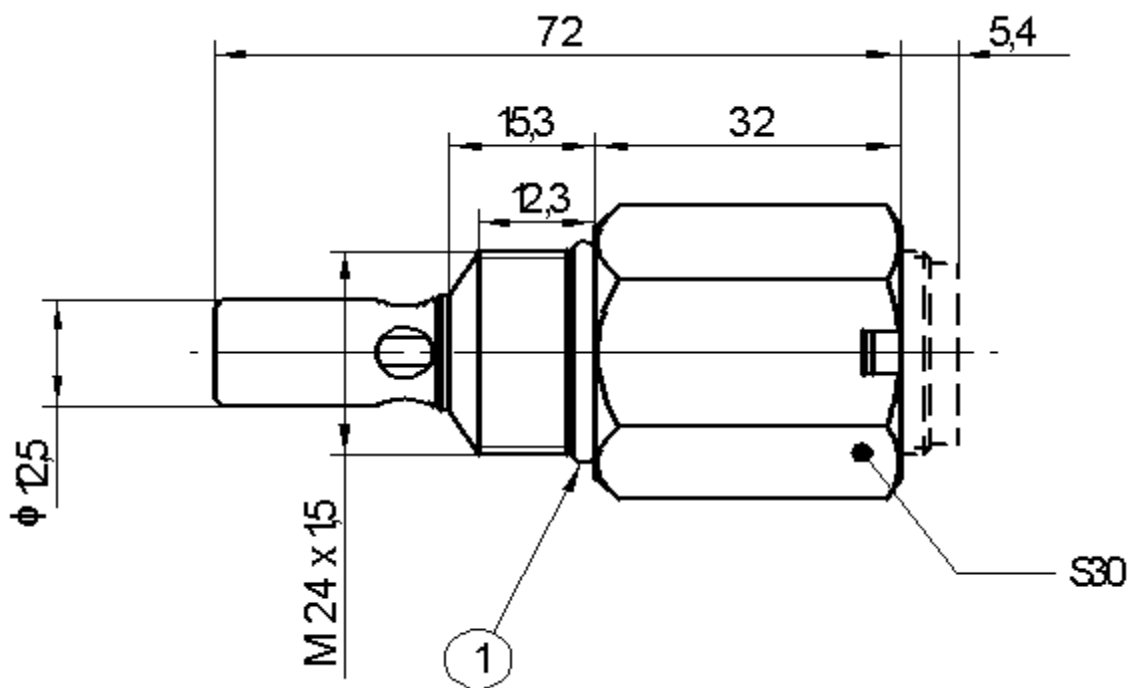
- without defining opening pressure in the valve code ( see page 4 ) ; possibility of regulation of the opening pressure in the range from 3 to 25 MPa
- with defining opening pressure in the valve code ; the valve is set for the pressure required and protected against readjustment.



## TECHNICAL DATA

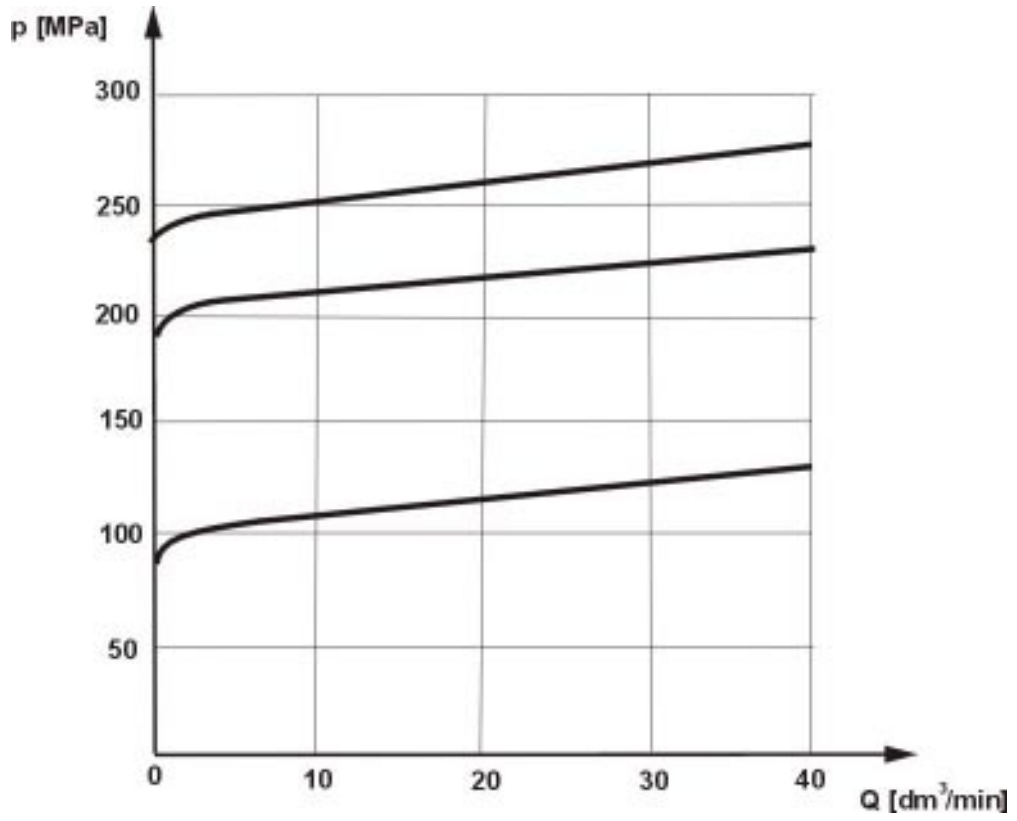
Working fluid	Mineral oil
Nominal fluid viscosity	37 mm <sup>2</sup> /s at a temp 328 K (55 <sup>0</sup> C)
Viscosity range	2,8 do 380 mm <sup>2</sup> /s
Optimum working temperature range	313 – 328 K (40 to 55 <sup>0</sup> C)
Temperature range	243 – 343 K (-30 to 70 <sup>0</sup> C)
Max setting pressure	25 MPa
Min. Setting pressure	3 (10) MPa
Max flow rate	40 dm <sup>3</sup> /min
Required filtration	16 μm
Reccomeded filtration	10 μm
Weight	0,22 kg

## OVERALL DIMENSIONS

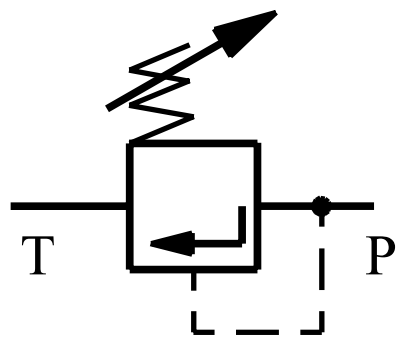


poz. 1 sealing ring "O-ring+ 21,3 x 2,4 NBR 85<sup>0</sup>Sh

**PERFORMANCE CURVES** at  $v = 41 \text{ mm}^2/\text{s}$  and a temp.  $323 \text{ K}$



**SYMBOL**



## HOW TO ORDER

Orders coded in the way showed below should be forwarded to the manufacturer.

UZIPDE6 - 02/.....

Pressure relief valve direct operated

**Series number:**

00-09 =02

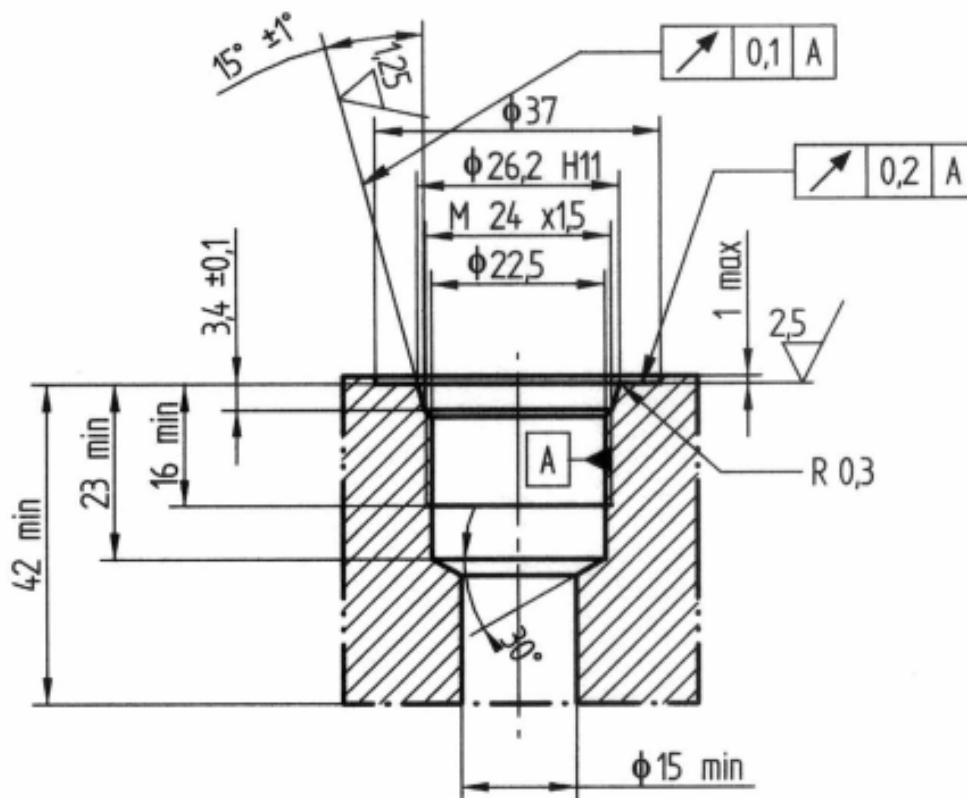
installation and connection dimension unchanged

**Opening pressure  
(range 10-25 MPa)**

Example - with defining opening pressure: **UZIPDE6 - 02**

- the valve is set for the pressure 21 MPa and protected against readjustment.: **UZIPDE6 - 02/210** - for URSUS tractor

### Dimensions of a cavity



PONAR WADOWICE S.A.  
ul. Wojska Polskiego 29  
34-100 Wadowice  
tel. 033/ 823 39 43, 823 30 41  
fax 033/ 873 48 80  
e-mail: ponar@ponar-wadowice.pl

**PONAR**<sup>®</sup>  
wadowice