

S7B

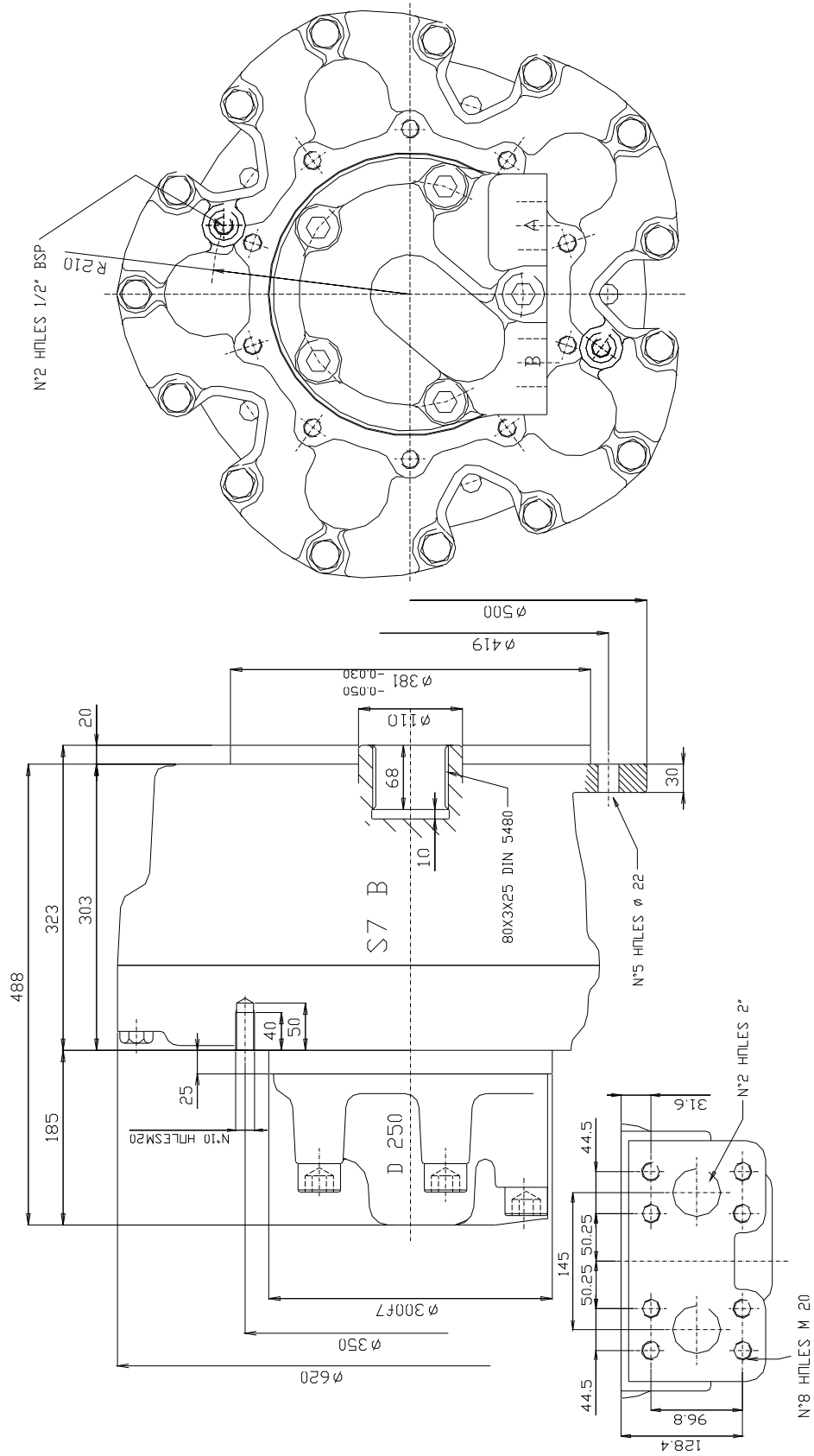
1400

| | | | | |
|-----------------|-------------------|------------------------|--------|-------|
| Displacements | <i>Cilindrate</i> | cm ³ /rev | 1462 | |
| Bore | ∅ | <i>Alesaggio</i> ∅ | mm | 92 |
| Shaft | | <i>Corsa</i> | mm | 44 |
| Specific Torque | | <i>Coppia Spec.</i> | Nm/bar | 22,82 |
| Cont. Pressure | | <i>Press. Cont.</i> | bar | 350 |
| Peak Pressure | | <i>Press. Picco</i> | bar | 425 |
| Cont. Speed | | <i>Velocita' Cont.</i> | rpm | 550 |
| Max. Speed | | <i>Velocita' Max</i> | rpm | 750 |
| Peak Power | | <i>Potenza Picco</i> | kW | 450 |

| | | | |
|---|--------|---------------|------------|
| Max. freewheeling speed: | | 900 rpm | |
| NB: Vacuum freewheeling with inlet port closed | | | |
| Weight: | approx | 390kg | 800 lb |
| Motor casing oil capacity: | | 21 lit | 1280 cu.in |
| Max. casing pressure: | cont. | 3 bar | 42 psi |
| | peak | 6 bar | 85 psi |
| Velocità max. in folle: | | 1000 giri/min | |
| NB: Funzionamento in "vacuum" con ingresso chiuso | | | |
| Peso: | ca | 390 kg | |
| Capacità olio corpo motore: | | 21 lit | |
| Pressione max. carcassa: | | 3 bar cont. | |
| | | 6 bar picco | |

NB: Continuous or average working pressure should be chosen in function of the required service lifetime (see bearing lifetime).

NB: La pressione continua o media di lavoro va determinata in funzione della vita del motore (vedi vita cuscinetti).



PERFORMANCE

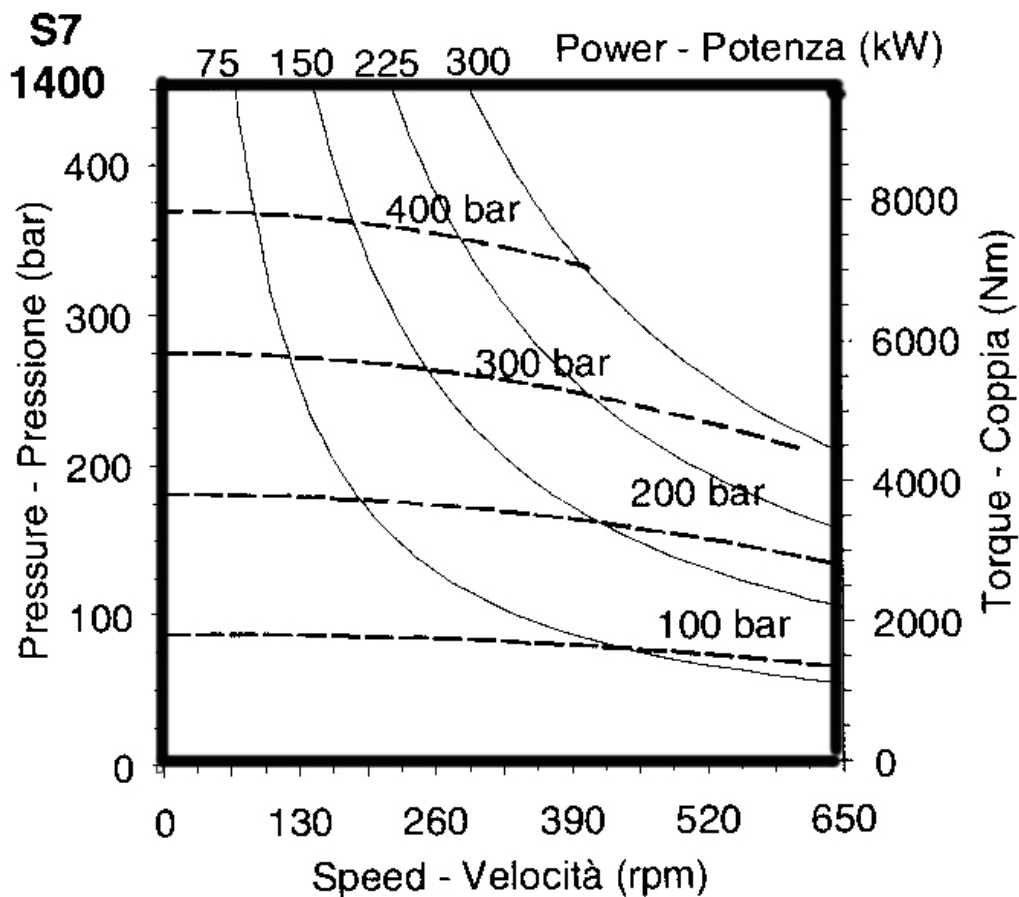
The graphs indicate the typical performance characteristics of the motors operating with mineral oil (standard ISO 68) l.

CARATTERISTICHE

I grafici si riferiscono alle caratteristiche dei motori operando con olio minerale (standard ISO 68)..

TORQUE -SPEED-POWER

COPPIA-VELOCITÀ-POTENZA



STARTING / STALLING TORQUE

The output torque of the motors does not fall off at stalling speed. The graphs above indicate the starting torque of the motors (torque at 0 rpm).

COPPIA DI SPUNTO / STALLO

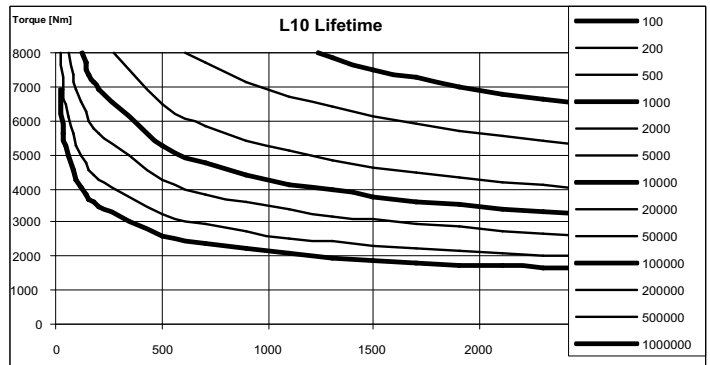
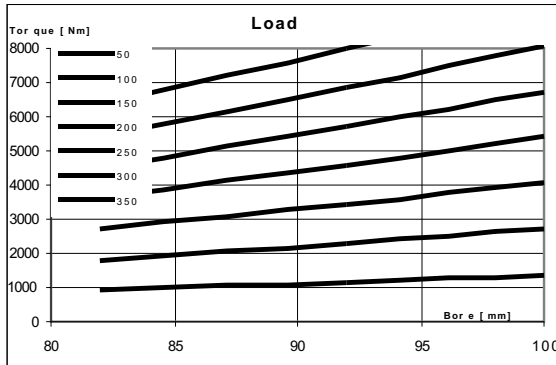
La coppia erogata dal motore non diminuisce in prossimità della velocità di stallo. I grafici indicano la coppia di spunto dei motori (coppia a 0 rpm)

BEARING LIFETIME

Note that the average lifetime of a bearing (B_{50} lifetime) is approximately 5 times the B_{10} lifetime.

VITA CUSCINETTI

Notare che la vita media di un cuscinetto (vita B_{50}) è circa 5 volte superiore alla vita B_{10} .



BEARING OPTIONS

Higher capacity spherical roller bearings (option X) - the lifetime is approximately 1.8 times lifetime of the sph.roller bearings .

OPZIONI CUSCINETTI

Cuscinetti a rulli orientabili a capacita' incrementata (opzione X)- la vita e' 1.8 volte la vita dei cuscinetti a rulli a botte standard

S7B 1400

OR 9SBKEXTFBA D250