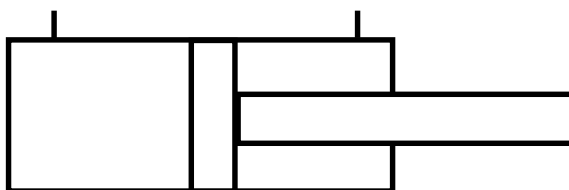


## APPLICATION

Single piston rod double acting cylinder transfers accumulated in a working liquid pressure energy into mechanical energy which puts the piston in reciprocating motion. When pressure affects the piston area, the piston travels downwards. When pressure affects the piston rod area, the piston returns.

## DIAGRAM

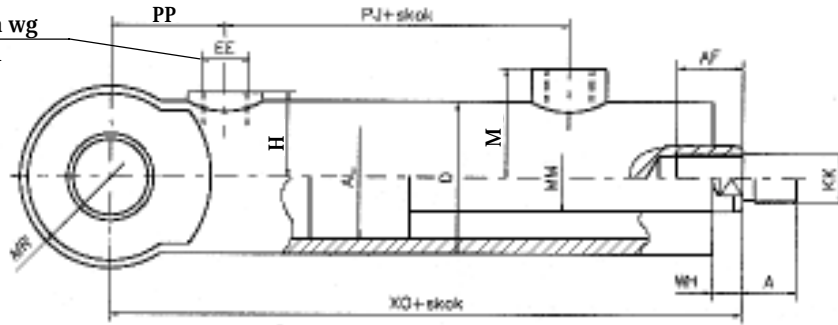


## TECHNICAL DATA

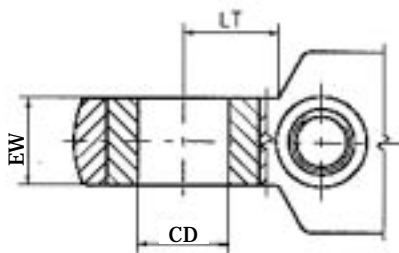
<b>Working fluid</b>	Hydraulic fluid (viscosity 10÷450 cSt)
<b>Nominal pressure</b>	16 MPa
<b>Required fluid filtration</b>	25 µm
<b>Operating temperature</b>	253÷353 K (-20÷80 °C)
<b>Max. rod speed</b>	0.5 m/s
<b>Efficiency</b>	>0.9
<b>Piston rod coating</b>	Chrome

# OVERALL DIMENSIONS

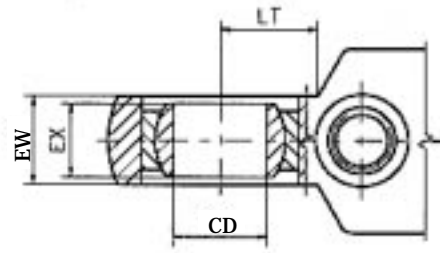
Dwa gniazda wg PN/M-73101



Type 1



Type 2



AL	25	32	40	50	63	80	100	125	140	160
MM	18	22	22	28	36	45	56	70	80	90
A	14	16	18	20	22	30	36	45	50	56
AF	16	22	22	30	36	45	50	63	75	85
CD	16	20	25	30	35	40	50	60	70	80
D	35	42	50	60	76	95	120	146	168	194
EE	M14x1.5	M14x1.5	M16x1.5	M16x1.5	M22x1.5	M27x2	M33x2	M33x2	M33x2	M33x2
EW	14	20	24	26	31	32	40	55	60	65
EX	14	16	20	22	25	28	35	44	49	55
H	15	18	28	32	40	50	55	69	80	93
M	31	35	36	42	50	62	75	88	98	110
KK	M12x1.5	M16x1.5	M16x1.5	M22x1.5	M27x2	M33x2	M42x2	M48x2	M56x2	M64x2
LT	17	22	26	28	36	45	56	70	80	90
MR	22	25	30	36	40	50	60	73	84	97
PP	26	33	38	41	53	65	80	90	110	122
PJ	58	61	64	73	85	105	124	138	155	154
WH	12	12	10	15	15	18	20	23	26	36
XO	128	149	160	176	212	255	300	338	391	411

Normalized strokes: 50, 80, 100, 125, 160, 200, 250, 320, 400, 500, 630, 800, 1000, 1250, 1600, 2000

## HOW TO ORDER

Orders coded in the way showed below should be forwarded to the manufacturer.

UCJ			16				*
-----	--	--	----	--	--	--	---

**Piston hydraulic cylinder**

**Mounting:**  
- swivel bearing = 1  
- spherical bearing = 2

**Piston rod end:**  
External metric thread = MZ  
Internal metric thread = MW

**Nominal pressure MPa**

**Series number**  
02 = 02  
(00 - 09) installation and connection dimension unchanged

**Piston dia**  
against a Table

**Piston rod dia**  
against a Table

**Piston stroke**  
against a Table

Further requirements to be added in text (to agree with manufacturer)

**Coding example:**  
UCJ1MZ16-02-80-45-250

**For special requirements, please, contact the manufacturer.a.**

PONAR WADOWICE S.A.  
ul. Wojska Polskiego 29  
34-100 Wadowice  
tel. 033/ 823 39 43, 823 30 41  
fax 033/ 873 48 80  
e-mail: ponar@ponar-wadowice.pl

