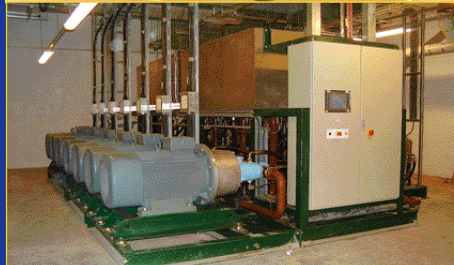


Applications are endless

- Wind Power
- Hydraulic test benches
- Lubrication
- Roll off cleanliness power packs
- OEM testing
- Steel paper mills
- Aerospace & Military
- Automotive



Headquarters, Italy



<http://www.mpfiltri.com>
<http://www.hydraulicparticlecounter.com>

“THE PROBLEM”

70 - 80 % of all failures of hydraulic systems + up to **45** % of all bearing failures are caused by contaminants in the hydraulic fluid

“THE CURE”



It is essential to invest in quality condition monitoring equipment

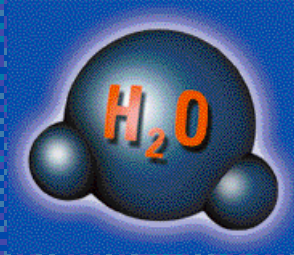
The hydraulic system is the critical "blood supply" of the machine. It is vital that it is maintained effectively. It is the most expensive set of components and costs the most in both down-time and materials to replace.

Some benefits of MP

Filtri's range of Hydraulic Particle Counters

- For the OEM - Reduction of warranty claims
- Improved life time of components
- Improved machine stability
- Reduction of failed components
- Improved customer satisfaction

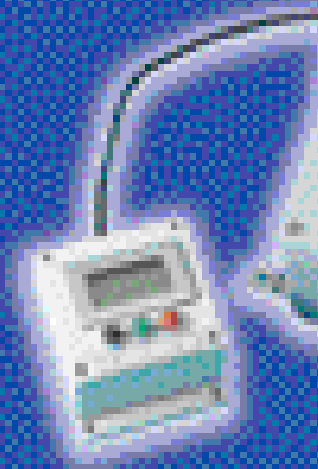
- All product ranges can include a moisture (RH) and temperature sensor



LPA²

Portable Particle Counter

- With bottle sampling options
- A fully programmable portable unit



P

Permanent

Parti

- Operating continuously

Features of the product range utilising the same technology:

- Highly accurate, sizing and counting particles of solid contaminant
- Instant, accurate results
- Automatic flush valve
- 8 measuring channels
- Viscosity range 1-400 mm²/S
- Pressure range 2-400 bar
- Unaffected by system flow/pressure/temperature fluctuations
- Bottle sampler facility - 110 ml & 250 ml options
- De-aeration facility on bottle sampler unit



CML²

• Mounted in-line
 • Particle Counter
 • Automatically where
 • Monitoring is essential



CML²

• Compact Particle Counter

- A portable service unit
- Lightweight, versatile, designed for use with mains power supply



In-Line Particle Counter

"The IPC"

The **New** Addition to the
 CMP Product Range

- Low Cost Particle Counter
- 8 Channel - Calibrated Product
- ISO 4406, NAS 1638, AS 4059
- In-Line to 400 bar
- "LPA" View Software Interface
- Lightweight and Compact Unit
- RS 485 Interface
- 9 to 36 Volt DC Voltage
- Connections 1/8, 1/4 BSP, M10x1, 7/16 UNF

Options

- Moisture (RH) Temperature Sensor
- Integrated LCD and Keypad
- Data Logging



BS Series

Bottle Sampling Units

- Available in 110 ml and 250 ml sizes
- Used in conjunction with both the LPA and CML series units

LPA-VIEW

Trend monitoring software

