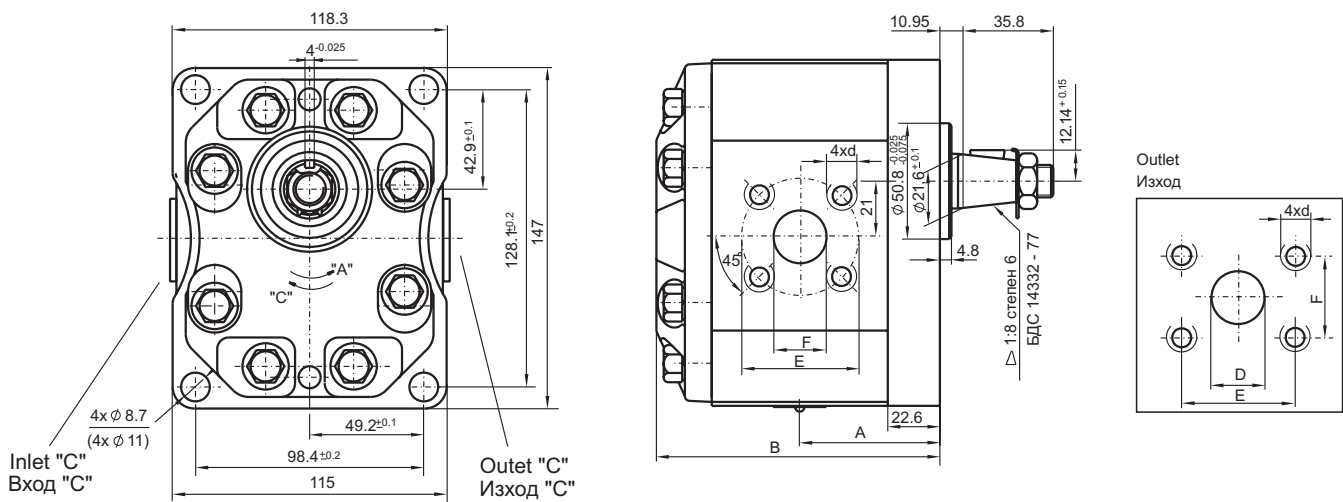


Technical data		Технически данни								
Type size Типоразмер		20	25	28	32	36	42	46	50	55
Displacement Работен обем	cm ³	20	25	28	32	36	42	46	50	55
Rated pressure Наминално налягане	bar	250	250	250	250	250	230	230	200	200
Max. pressure Максимално налягане	bar	280	280	280	280	280	250	250	230	230
Min. pressure Мин. честота на въртене	min ⁻¹	700	700	700	700	700	700	700	700	700
Max. speed Макс. честота на въртене	min ⁻¹	2500	2500	2500	2500	2300	2300	2100	2100	1750

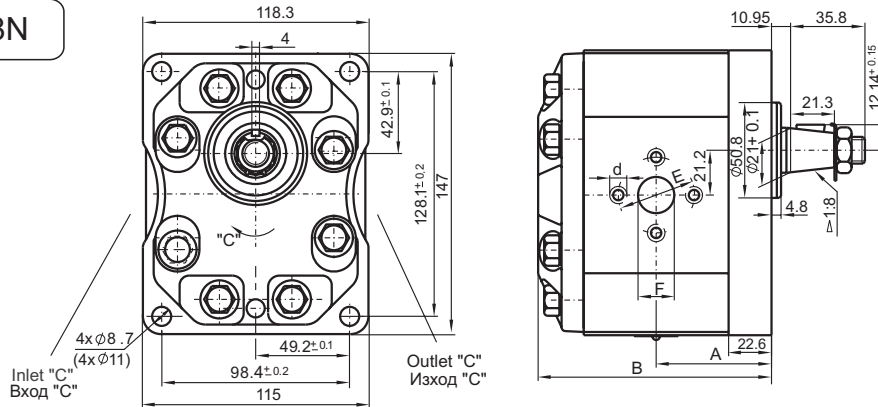
30A(C) 002N



Type Тип	Displacement Геометричен обем cm ³	Dimensions Размери [mm]												
		A	B	Inlet Вход					Outlet Изход					
				E	d	F	M	G	E	d	F	D	G	
30A(C)20X002N	20	56.1	113.7	∅39.7	M8	∅19				37.6	M8	22.2	∅19	
30A(C)25X002N	25	58.3	118.1	∅39.7	M8	∅19				37.6	M8	22.2	∅19	
30A(C)28X002N	28	60.2	121.7	∅39.7	M8	∅19				37.6	M8	22.2	∅19	
30A(C)32X002N	32	62	125.3	∅50.8	M10	∅27				37.6	M8	22.2	∅19	
30A(C)36X002N	36	63.5	128.4	∅50.8	M10	∅27				37.6	M8	22.2	∅19	
30A(C)42X002N	42	66.4	134.1	∅50.8	M10	∅27				37.6	M8	22.2	∅19	
30A(C)46X002N	46	68.2	137.8	∅50.8	M10	∅27				37.6	M8	22.2	∅19	
30A(C)50X002N	50	70	141.4	∅50.8	M10	∅27				37.6	M8	22.2	∅19	
30A(C)55X002N	55	72.2	145.9	∅50.8	M10	∅27				37.6	M8	22.2	∅19	

GROUP 30 / ГРУПА 30

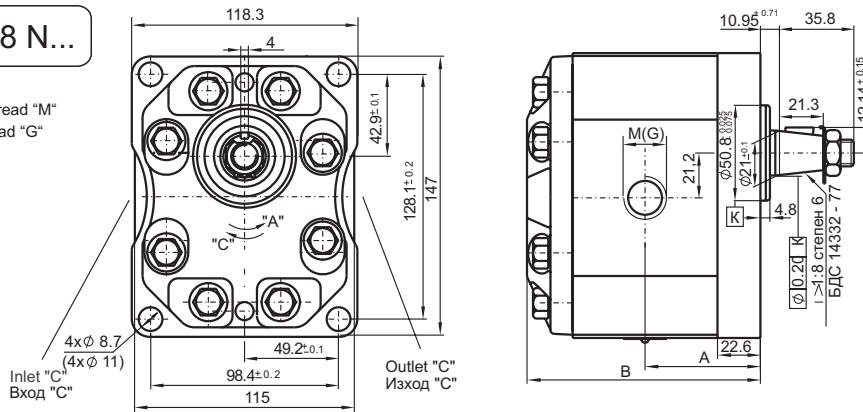
30A(C) X068N



Type Тип	Dimensions Размери [mm]													
	Displacement Геометричен обем cm ³	A	B	Inlet Вход			Outlet Изход							
				E	d	F	M	G	E	d	F	M	G	
30A(C)20X068N	20	56.1	113.7	∅39.7	M8	∅19				∅39.7	M8	∅19		
30A(C)25X068N	25	58.3	118.1	∅39.7	M8	∅19				∅39.7	M8	∅19		
30A(C)28X068N	28	60.2	121.7	∅39.7	M8	∅19				∅39.7	M8	∅19		
30A(C)32X068N	32	62	125.3	∅50.8	M10	∅27				∅39.7	M8	∅19		
30A(C)36X068N	36	63.5	128.4	∅50.8	M10	∅27				∅39.7	M8	∅19		
30A(C)42X068N	42	66.4	134.1	∅50.8	M10	∅27				∅39.7	M8	∅19		
30A(C)46X068N	46	68.2	137.8	∅50.8	M10	∅27				∅39.7	M8	∅19		
30A(C)50X068N	50	70	141.4	∅50.8	M10	∅27				∅39.7	M8	∅19		
30A(C)55X068N	55	72.2	145.9	∅50.8	M10	∅27				∅39.7	M8	∅19		

30A(C) X068 N...

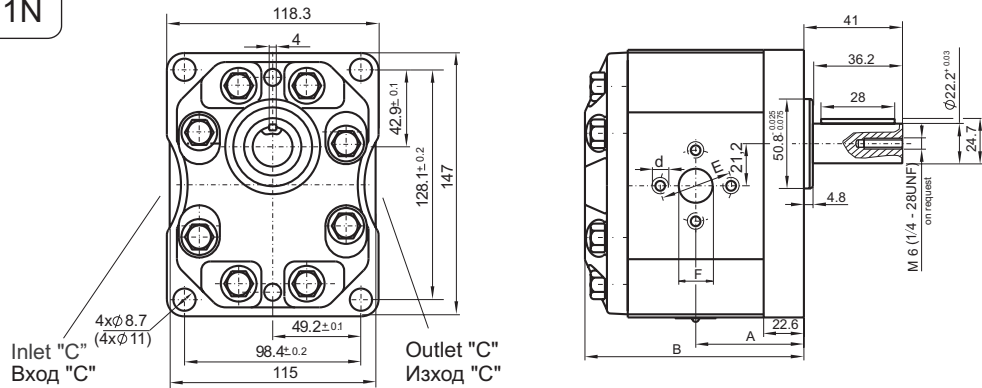
30A(C)...X068NM - metric thread "M"
30A(C)...X068NT - GAS thread "G"



Type Тип	Dimensions Размери [mm]													
	Displacement Геометричен обем cm ³	A	B	Inlet Вход			Outlet Изход							
				E	d	F	M	G	E	d	F	M	G	
30A(C)20X068N...	20	56.1	113.7				M27x1.5	G3/4"				M27x1.5	G3/4"	
30A(C)25X068N...	25	58.3	118.1				M27x1.5	G3/4"				M27x1.5	G3/4"	
30A(C)28X068N...	28	60.2	121.7				M33x1.5	G1"				M27x1.5	G3/4"	
30A(C)32X068N...	32	62	125.3				M33x1.5	G1"				M27x1.5	G3/4"	
30A(C)36X068N...	36	63.5	128.4				M33x1.5	G1"				M27x1.5	G3/4"	
30A(C)42X068N...	42	66.4	134.1				M33x1.5	G1"				M27x1.5	G3/4"	
30A(C)46X068N...	46	68.2	137.8				M33x1.5	G1"				M27x1.5	G3/4"	
30A(C)50X068N...	50	70	141.4				M33x1.5	G1"				M27x1.5	G3/4"	
30A(C)55X068N...	55	72.2	145.9				M33x1.5	G1"				M27x1.5	G3/4"	

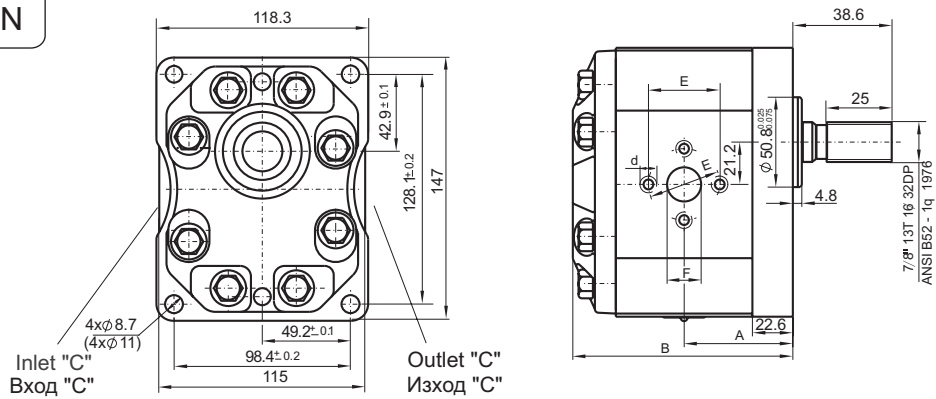
GROUP 30 ГРУПА 30

30A(C) X068.1N



Type Тип	Displacement Геометричен обем cm ³	Dimensions Размери [mm]													
		A	B	Inlet Вход					Outlet Изход						
				E	d	F	M	G	E	d	F	M	G		
30A(C)20X068.1N	20	56.1	113.7	Ø39.7	M8	Ø19					Ø39.7	M8	Ø19		
30A(C)25X068.1N	25	58.3	118.1	Ø39.7	M8	Ø19					Ø39.7	M8	Ø19		
30A(C)28X068.1N	28	60.2	121.7	Ø39.7	M8	Ø19					Ø39.7	M8	Ø19		
30A(C)32X068.1N	32	62	125.3	Ø50.8	M10	Ø27					Ø39.7	M8	Ø19		
30A(C)36X068.1N	36	63.5	128.4	Ø50.8	M10	Ø27					Ø39.7	M8	Ø19		
30A(C)42X068.1N	42	66.4	134.1	Ø50.8	M10	Ø27					Ø39.7	M8	Ø19		
30A(C)46X068.1N	46	68.2	137.8	Ø50.8	M10	Ø27					Ø39.7	M8	Ø19		
30A(C)50X068.1N	50	70	141.4	Ø50.8	M10	Ø27					Ø39.7	M8	Ø19		
30A(C)55X068.1N	55	72.2	145.9	Ø50.8	M10	Ø27					Ø39.7	M8	Ø19		

30A(C) X068.2N

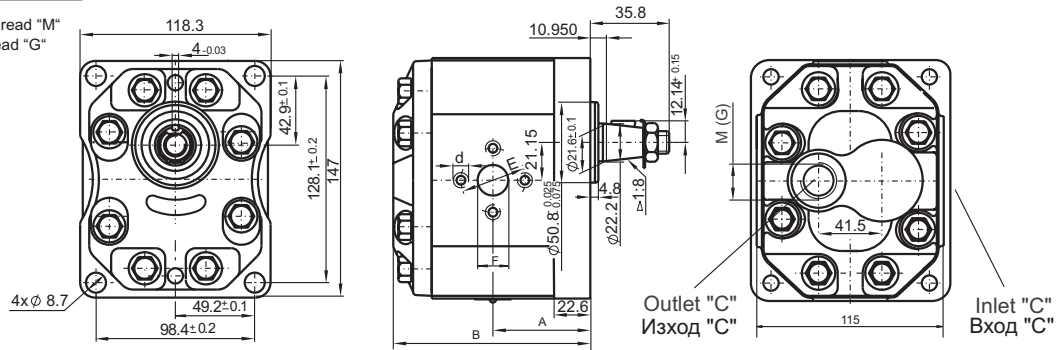


Type Тип	Displacement Геометричен обем cm ³	Dimensions Размери [mm]													
		A	B	Inlet Вход					Outlet Изход						
				E	d	F	M	G	E	d	F	M	G		
30A(C)20X068.2N	20	56.1	113.7	Ø39.7	M8	Ø19					Ø39.7	M8	Ø19		
30A(C)25X068.2N	25	58.3	118.1	Ø39.7	M8	Ø19					Ø39.7	M8	Ø19		
30A(C)28X068.2N	28	60.2	121.7	Ø39.7	M8	Ø19					Ø39.7	M8	Ø19		
30A(C)32X068.2N	32	62	125.3	Ø50.8	M10	Ø27					Ø39.7	M8	Ø19		
30A(C)36X068.2N	36	63.5	128.4	Ø50.8	M10	Ø27					Ø39.7	M8	Ø19		
30A(C)42X068.2N	42	66.4	134.1	Ø50.8	M10	Ø27					Ø39.7	M8	Ø19		
30A(C)46X068.2N	46	68.2	137.8	Ø50.8	M10	Ø27					Ø39.7	M8	Ø19		
30A(C)50X068.2N	50	70	141.4	Ø50.8	M10	Ø27					Ø39.7	M8	Ø19		
30A(C)55X068.2N	55	72.2	145.9	Ø50.8	M10	Ø27					Ø39.7	M8	Ø19		

GROUP 30 / ГРУПА 30

30A(C)...XU068N...

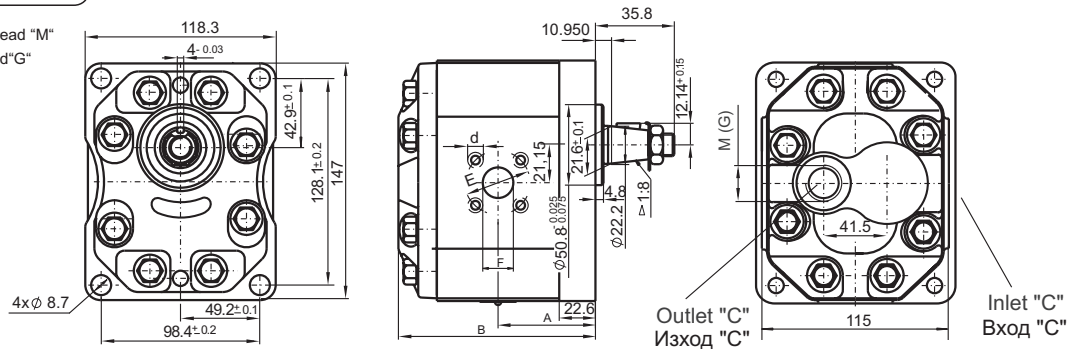
30A(C)...XU068NM - metric thread "M"
30A(C)...XU068NT - GAS thread "G"



Type Тип	Displacement Геометричен обем cm ³	Dimensions Размери [mm]												
		A	B	Inlet Вход				Outlet Изход						
				E	d	F	M	G	E	d	F	M	G	
30A(C)20XU068N...	20	56.1	115.5	∅39.7	M8	∅19							M27x1.5	G3/4"
30A(C)25XU068N...	25	58.3	121.5	∅39.7	M8	∅19							M27x1.5	G3/4"
30A(C)28XU068N...	28	60.2	124.7	∅39.7	M8	∅19							M27x1.5	G3/4"
30A(C)32XU068N...	32	62	129	∅50.8	M10	∅27							M27x1.5	G3/4"
30A(C)36XU068N...	36	63.5	132	∅50.8	M10	∅27							M27x1.5	G3/4"
30A(C)42XU068N...	42	66.4	137.5	∅50.8	M10	∅27							M27x1.5	G3/4"
30A(C)46XU068N...	46	68.2	141	∅50.8	M10	∅27							M27x1.5	G3/4"
30A(C)50XU068N...	50	70	145	∅50.8	M10	∅27							M27x1.5	G3/4"
30A(C)55XU068N...	55	72.2	149.5	∅50.8	M10	∅27							M27x1.5	G3/4"

30A(C)...XU002N...

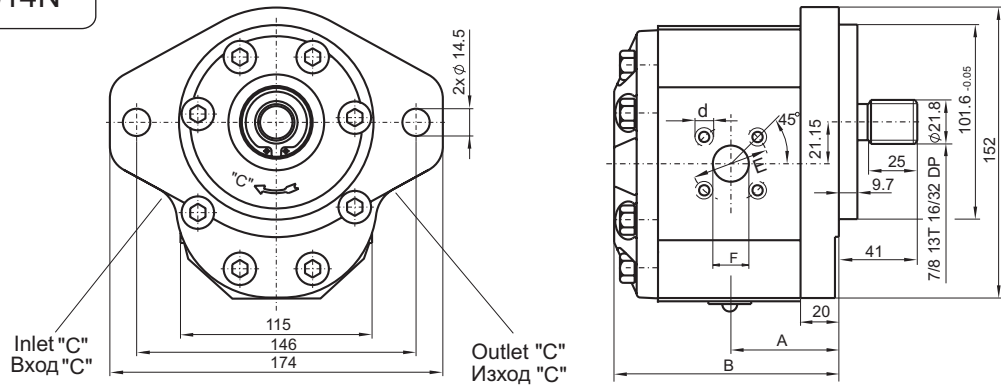
30A(C)...XU002NM - metric thread "M"
30A(C)...XU002NT - GAS thread "G"



Type Тип	Displacement Геометричен обем cm ³	Dimensions Размери [mm]												
		A	B	Inlet Вход				Outlet Изход						
				E	d	F	M	G	E	d	F	M	G	
30A(C)20XU002N...	20	56.1	115.5	∅39.7	M8	∅19							M27x1.5	G3/4"
30A(C)25XU002N...	25	58.3	121.5	∅39.7	M8	∅19							M27x1.5	G3/4"
30A(C)28XU002N...	28	60.2	124.7	∅39.7	M8	∅19							M27x1.5	G3/4"
30A(C)32XU002N...	32	62	129	∅50.8	M10	∅27							M27x1.5	G3/4"
30A(C)36XU002N...	36	63.5	132	∅50.8	M10	∅27							M27x1.5	G3/4"
30A(C)42XU002N...	42	66.4	137.5	∅50.8	M10	∅27							M27x1.5	G3/4"
30A(C)46XU002N...	46	68.2	141	∅50.8	M10	∅27							M27x1.5	G3/4"
30A(C)50XU002N...	50	70	145	∅50.8	M10	∅27							M27x1.5	G3/4"
30A(C)55XU002N...	55	72.2	149.5	∅50.8	M10	∅27							M27x1.5	G3/4"

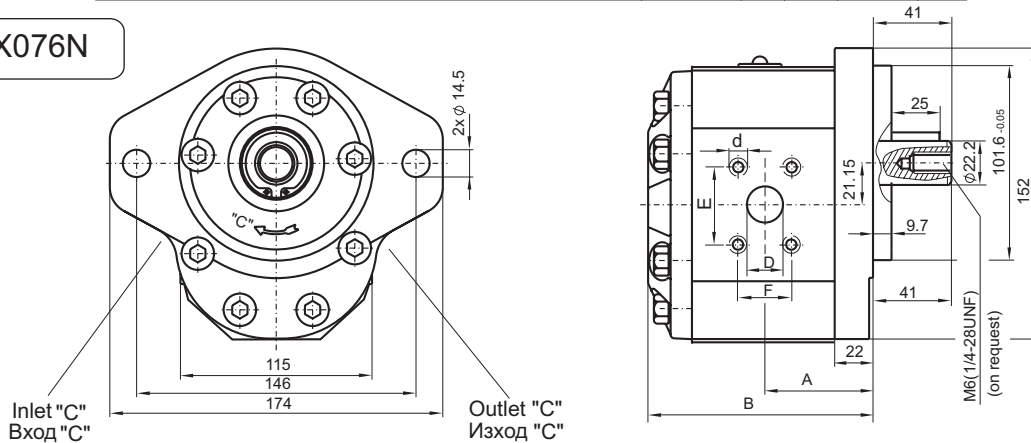
GROUP 30 / ГРУПА 30

30A(C)...X014N



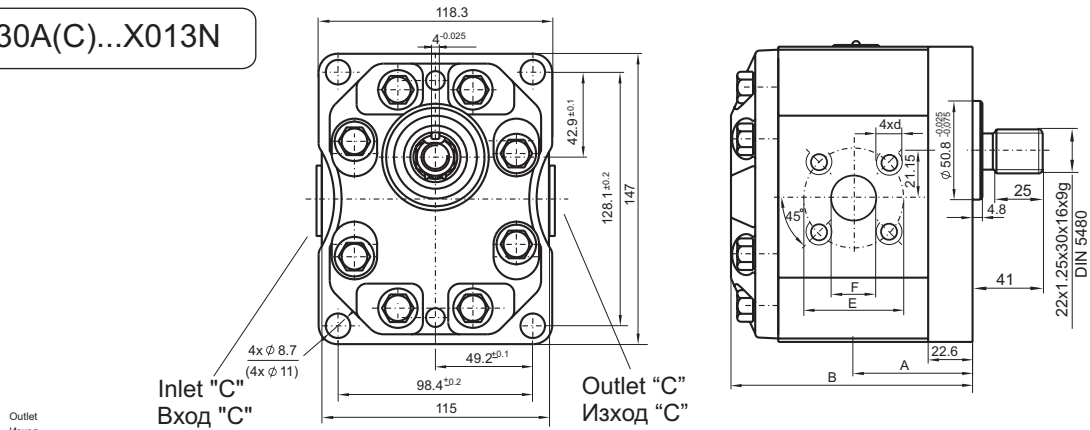
Type Тип	Dimensions Размери [mm]													
	Displacement Геометричен обем cm ³	A	B	Inlet Вход					Outlet Изход					
				E	d	F	M	G	E	d	F	M	G	
30A(C)20X014N	20	53.5	111.1	∅55	M8	∅26				∅55	M8	∅18		
30A(C)25X014N	25	55.7	115.5	∅55	M8	∅26				∅55	M8	∅18		
30A(C)28X014N	28	57.6	119.1	∅55	M8	∅26				∅55	M8	∅18		
30A(C)32X014N	32	59.4	122.7	∅55	M8	∅26				∅55	M8	∅18		
30A(C)36X014N	36	61	125.8	∅55	M8	∅26				∅55	M8	∅18		
30A(C)42X014N	42	63.8	131.5	∅55	M8	∅26				∅55	M8	∅18		
30A(C)46X014N	46	65.6	135.2	∅55	M8	∅26				∅55	M8	∅18		
30A(C)50X014N	50	67.4	138.8	∅55	M8	∅26				∅55	M8	∅18		
30A(C)55X014N	55	69.7	143.3	∅55	M8	∅26				∅55	M8	∅18		

30A(C)...X076N



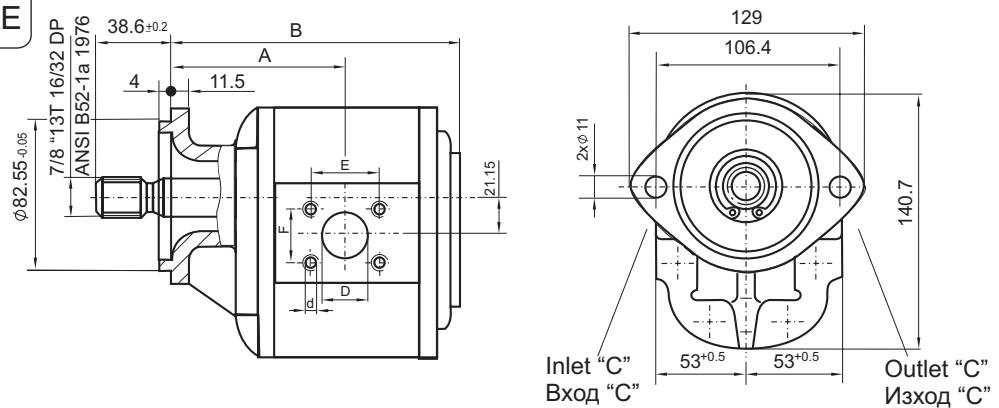
Type Тип	Dimensions Размери [mm]													
	Displacement Геометричен обем cm ³	A	B	Inlet Вход					Outlet Изход					
				E	d	F	D	G	E	d	F	D	G	
30A(C)20X076N	20	55.5	113.1	52.4	3/8"-16UNC-2B	26.2	∅26			47.6	3/8"-16UNC-2B	22.2	∅18	
30A(C)25X076N	25	57.7	117.5	52.4		26.2	∅26			47.6		22.2	∅18	
30A(C)28X076N	28	59.6	121.1	52.4		26.2	∅26			47.6		22.2	∅18	
30A(C)32X076N	32	61.4	124.7	52.4		26.2	∅26			47.6		22.2	∅18	
30A(C)36X076N	36	63	127.8	52.4		26.2	∅26			47.6		22.2	∅18	
30A(C)42X076N	42	65.8	133.5	52.4		26.2	∅26			47.6		22.2	∅18	
30A(C)46X076N	46	67.6	137.2	52.4		26.2	∅26			47.6		22.2	∅18	
30A(C)50X076N	50	69.4	140.8	52.4		26.2	∅26			47.6		22.2	∅18	
30A(C)55X076N	55	71.6	145.3	52.4		26.2	∅26			47.6		22.2	∅18	

30A(C)...X013N



Type Тип	Displacement Геометричен обем cm ³	Dimensions Размери [mm]												
		A	B	Inlet Вход				Outlet Изход						
				E	d	F	M	G	E	d	F	D	G	
30A(C)20X013N	20	56.1	113.7	φ39.7	M8	φ19					37.6	M8	22.2	φ19
30A(C)25X013N	25	58.3	118.1	φ39.7	M8	φ19					37.6	M8	22.2	φ19
30A(C)28X013N	28	60.2	121.7	φ39.7	M8	φ19					37.6	M8	22.2	φ19
30A(C)32X013N	32	62	125.3	φ50.8	M10	φ27					37.6	M8	22.2	φ19
30A(C)36X013N	36	63.5	128.4	φ50.8	M10	φ27					37.6	M8	22.2	φ19
30A(C)42X013N	42	66.4	134.1	φ50.8	M10	φ27					37.6	M8	22.2	φ19
30A(C)46X013N	46	68.2	137.8	φ50.8	M10	φ27					37.6	M8	22.2	φ19
30A(C)50X013N	50	70	141.4	φ50.8	M10	φ27					37.6	M8	22.2	φ19
30A(C)55X013N	55	72.2	145.9	φ50.8	M10	φ27					37.6	M8	22.2	φ19

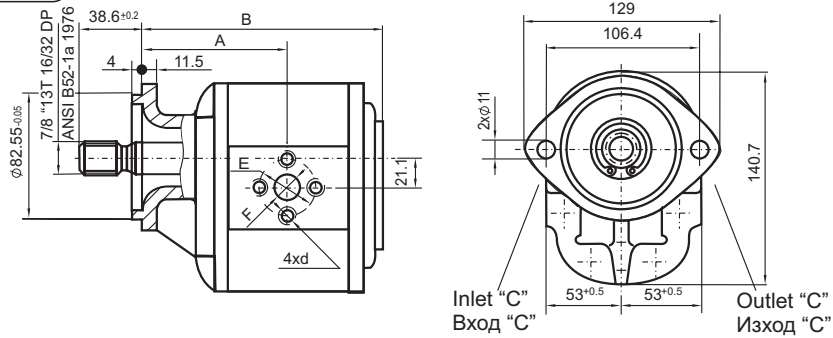
30A(C)...X015-SAE



Type Тип	Displacement Геометричен обем cm ³	Dimensions Размери [mm]														
		A	B	Inlet Вход				Outlet Изход								
				E	d	F	D	G	E	d	F	D	G			
30A(C)20X015-SAE																
30A(C)25X015-SAE																
30A(C)28X015-SAE																
30A(C)32X015-SAE	32	100.4	162	52.4	3/8"-16UNC-2B	26.2	φ27			52.4	3/8"-16UNC-2B	26.2	φ18			
30A(C)36X015-SAE																
30A(C)42X015-SAE																
30A(C)46X015-SAE																
30A(C)50X015-SAE																
30A(C)55X015-SAE	55	111.5	197	69.8		35.6	φ32			52.4		26.2	φ22			

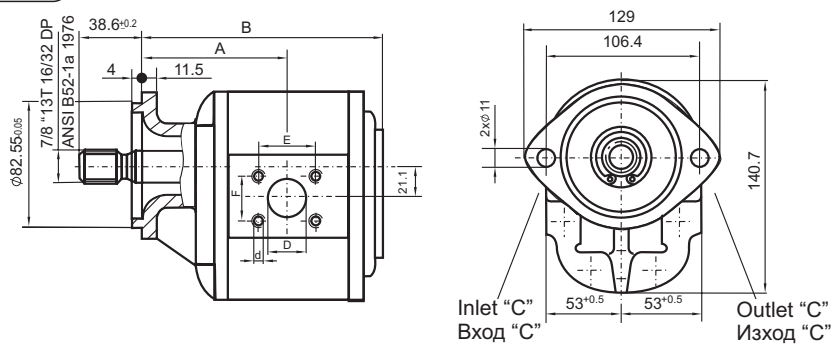
GROUP 30 / ГРУПА 30

30A(C)...X068-SAE

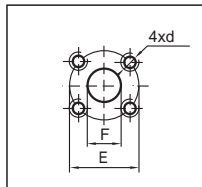


Type Тип	Dimensions Размери [mm]												
	Displacement Геометричен обем cm ³	A	B	Inlet Вход					Outlet Изход				
				E	d	F	M	G	E	d	F	M	G
30A(C)20X068-SAE													
30A(C)25X068-SAE													
30A(C)28X068-SAE													
30A(C)32X068-SAE	32	62	129	∅50.8	M10	∅27				∅39.7	M8	∅19	
30A(C)36X068-SAE													
30A(C)42X068-SAE													
30A(C)46X068-SAE													
30A(C)50X068-SAE													
30A(C)55X068-SAE													

30A(C)...X002-SAE



Inlet / Вход



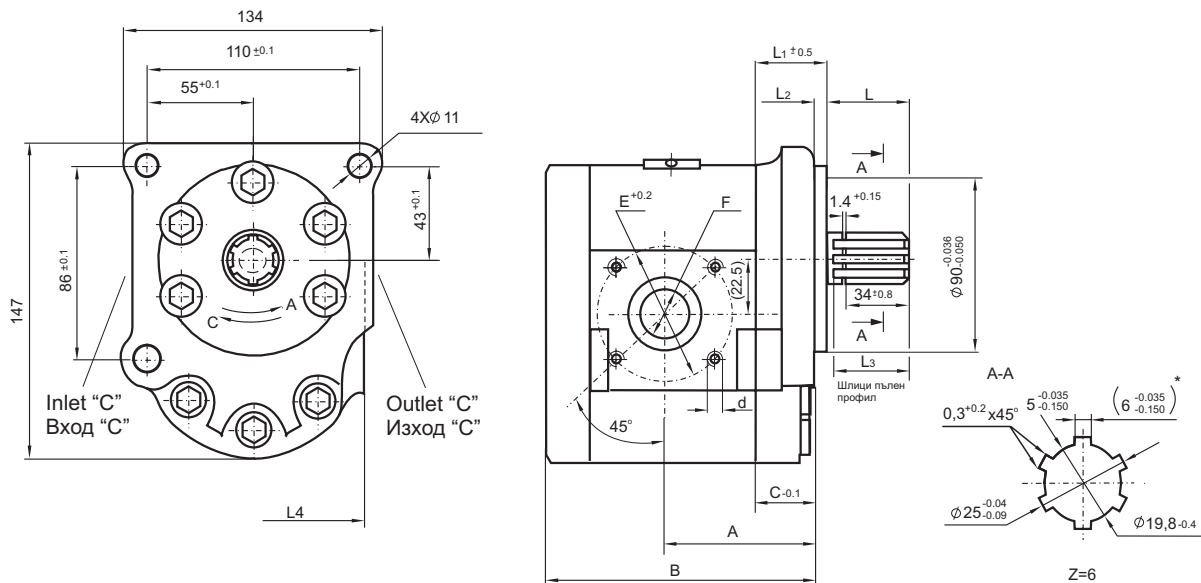
Type Тип	Dimensions Размери [mm]												
	Displacement Геометричен обем cm ³	A	B	Inlet Вход					Outlet Изход				
				E	d	F	M	G	E	d	F	D	G
30A(C)20X002N													
30A(C)25X002N													
30A(C)28X002N													
30A(C)32X002N	32	100.35	162	∅50.8	M10	∅27				37.6	M8	22.2	∅19
30A(C)36X002N													
30A(C)42X002N													
30A(C)46X002N													
30A(C)50X002N													
30A(C)55X002N													

GROUP 30 / ГРУПА 30

ANALOGUES OF HYDRAULIC GEAR PUMPS НШ32Д, НШ32У-3, НШ46У-Л4, НШ50У-3Л
 АНАЛОЗИ НА ХИДРАВЛИЧНИ ЗЪБНИ ПОМПИ НШ32Д, НШ32У-3, НШ46У-Л4, НШ50У-3Л

30A(C)...X004...

Pumps type	Тип помпи		НШ32Д	НШ32У-3	НШ46У-Л4	НШ50У-3Л
Displacement Работен обем		cm ³	32	32	46	50
Output pressure of the pump Налягане на изхода на помпата		bar				
Nominal Номинално			160	140	140	140
Maximal Максимално			200	175	175	175
Absolut input pressure of the pump Абсолютно налягане на входа на помпата		bar				
Nominal Номинално			0.74	0.8	0.74	0.74
Maximal Максимално			1.50	1.3	1.50	1.50
Rotational frequency of the pump's shaft Честота на въртене на вала		min ⁻¹				
Minimal Минимална			700	700	700	700
Nominal Номинална			1920	1920	1920	1920
Maximal Максимална			2400	2400	2300	2300



*The width of the grooves 5 or 6 mm should be clarified for each order.

*Ширината на шлиците 5 или 6 mm се уточнява за всяка поръчка.

Type	Тип	Dimensions									Размери [mm]					
		SUBST. PUMP ЗАМЕНЯЕМИ ПОМПИ (ГОСТ 8753-80)	A	B	C	L	L ₁	L ₂	L ₃	L ₄	Inlet Вход			Outlet Изход		
											d	E	F	d	E	F
30A(C)32X 004Д	НШ 32 Д		67.5	128.35	28.15	42	34.15	6	34	112	M8	65	24	M8	65	22
30A(C)32X 004-3	НШ 32 У-3		63.1	123.96	23.76	47	29.26	5.5	34	112	M8	65	24	M8	65	22
30A(C)46X 004-4	НШ 46 У-Л4		72.5	139.65	27.7	45	33.7	6	34	112	M10	76	30	M10	76	27
30A(C)50X 004-3	НШ 50 У-3Л		72.5	143.25	25.5	45	31.5	6	34	112	M10	76	30	M10	76	27