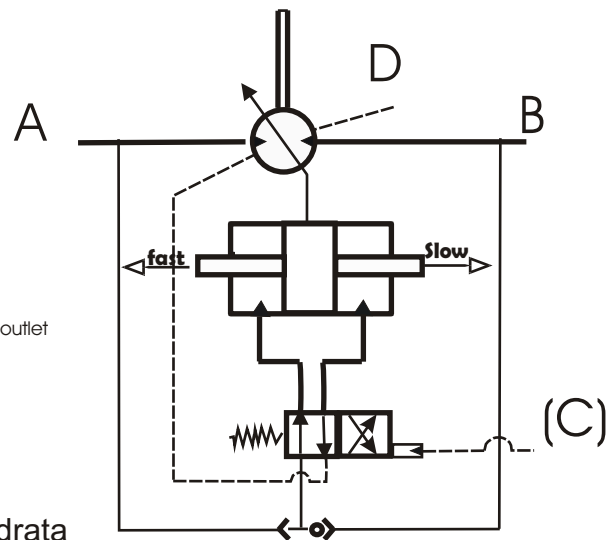


Dual displacement control circuit.

Circuito di controllo del cambio di cilindrata

A/B Inlet /outlet
(C) Pilot
D Drain



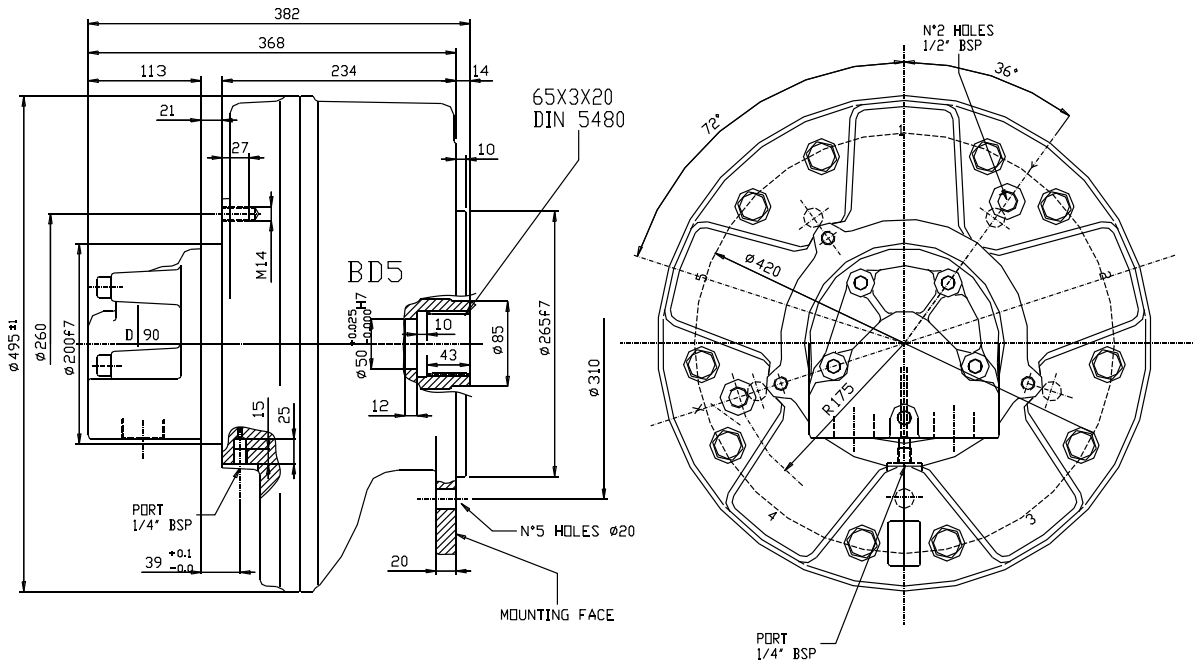
| BD 5 | | | 1000 - 250 | | 1500 - 400 | | 1900 - 500 | |
|-----------------|------------------|--------|-------------------|------|-------------------|------|-------------------|------|
| Displacement | Cilindrata | cc/rev | 957 | 246 | 1505 | 387 | 1848 | 475 |
| Bore Ø | Alesaggio | mm | 59 | | 74 | | 82 | |
| Shaft | Corsa | mm | 70 | 18 | 70 | 18 | 70 | 18 |
| Specific torque | Coppia specifica | Nm/bar | 14,9 | 3,8 | 23,5 | 6,0 | 28,8 | 7,4 |
| Cont. pressure | Pres. Continua | bar | 250 | | 250 | | 250 | |
| Peak pressure | Pres. Picco | bar | 425 | | 375 | | 350 | |
| Max. speed | Velocita' max | rpm | 700 | 1400 | 600 | 1200 | 500 | 1000 |
| Peak power | Potenza picco | kW | 170 | 150 | 170 | 150 | 170 | 150 |

Approx weight: 170 kg
 Motor case oil capacity: 10 lit
 Max. Case pressure : 1bar Cont.
 5bar Peak

Peso approssimato: 170kg
 Capacità olio del corpo motore: 10 lit
 Max.pressione in carcassa: 1 bar Continuo
 5 bar Picco

SAI Spa
 41100 Modena Italia
 www.saispa.it
 e-mail saispa@saispa.it

Provisional leaflets subjected to change without notice. All data are real and calculated according existing project



MAIN PORT CONNECTIONS

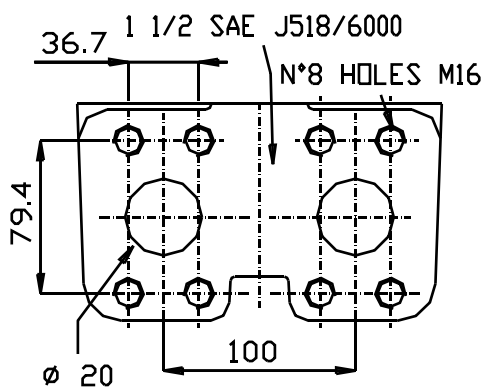
FISSAGGIO RACCORDI OLIO

SHAFTS SPECIFICATIONS

ALBERI

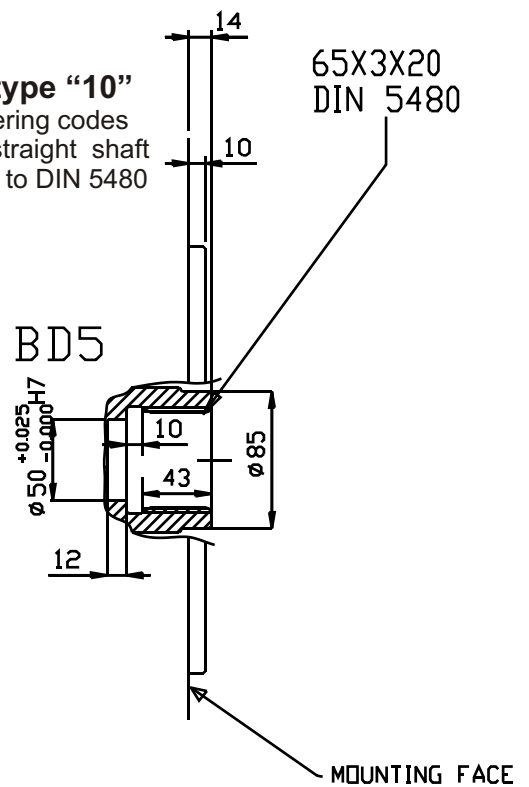
Distributor type "D90"

see ordering codes
1,5" SAE 6000 psi



Shaft type "10"

see ordering codes
female straight shaft
20 teeth to DIN 5480



PERFORMANCES

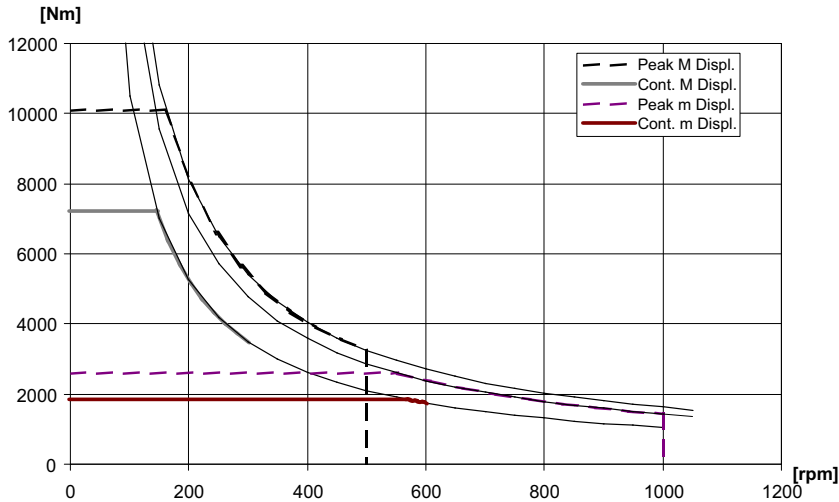
The graphs indicate the typical performance characteristics of the motors operating with mineral oil (standard ISO 68) l.

CARATTERISTICHE

I grafici si riferiscono alle caratteristiche dei motori operando con olio minerale (standard ISO 68)..

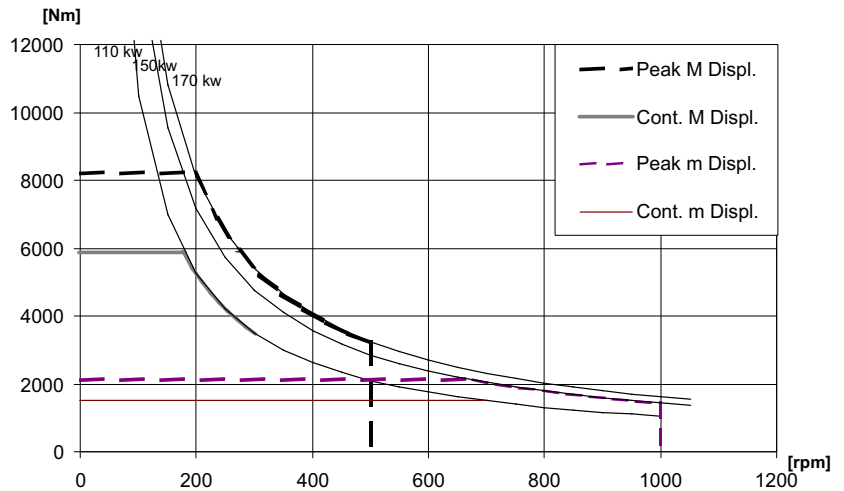
TORQUE -SPEED-POWER

Performance Range BD5 1900 - 500

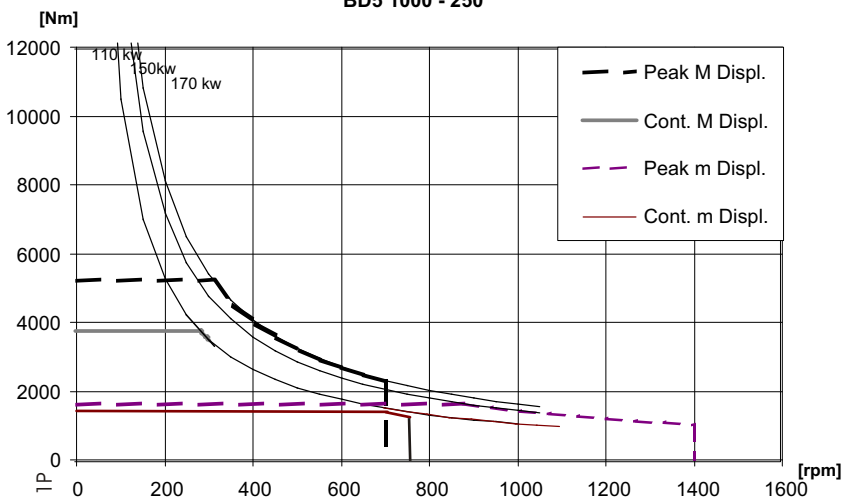


COPPIA-VELOCITÀ-POTENZA

Performance Range
BD5 1500 - 400



Performance Range
BD5 1000 - 250



ORDER CODES

CODICI D'ORDINE

BD5

+

MOTOR CODE

1. Nominal sizes- see motor spec. Table
High displ.-Low displ.

2. Shaft option:

10 = female 65-3-20 DIN 5480

3. Bearings:

no code = roller bearings
G = spherical roller bearings

4. Other options:

U = without shaft seal
SV = stainless steel shaft sleeve
corr. protect. for shaft seal
V = Vytan seals
A = high pressure shaft seal-10bar in case*
*Pls consult SAI tech.office

DISTRIBUTOR CODE see page*

5. Distributor: D90 standard

ASSEMBLY CODES

7. Direction of shaft rotation: standard motors are supplied with clockwise rotation (viewed from shaft end) with flow in port A, out port B.

R = clockwise rotation
L = anti-clockwise rotation

8. Distributor cover position: see page 8

no code = position DM1
DM . , = other position

CODICE MOTORE

1. **Cilindrata nominale** - vedi tabella cilindrata.
2. **Opzioni albero:**

10 = femm. 65-3-20 DIN 5480

3. **Cuscinetti:**

nessun codice = cuscinetti a rulli
G = cuscinetti a rulli di botte

4. **Altre opzioni:**

U = senza tenuta albero
SV = protez. anticorros. per tenuta
V = Tenute in Vytan
A = anello per alta pressione*
*Consultare l'Uff. Tecnico SAI

CODICE DISTRIBUTORE vedi pagina *

5. Distributore : D90 standard

CODICI PER L'ASSEMBLAGGIO

7. **Rotazione albero:** i motori sono forniti con rotazione in senso orario (visto dal lato albero) con flusso in ingresso in port A, in uscita port B.

R = rotazione in senso orario
L = rotazione in senso anti-orario

8. **Posiz. coperchio distributore:** vedi pag. 8

~~nessun codice = posizione DM1~~
DM . , = altra posizione