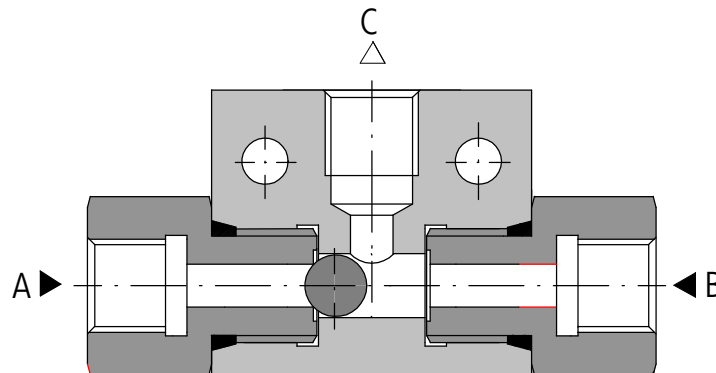


### APPLICATION

3UZZE 6 was designed in order to supply the hydraulic receiver or test – control circuit from two independent hydraulic systems



### DESCRIPTION

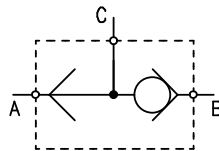


Supplying with the pressure one of two collinear valve ports (**A** or **B** of logical valve), connection between this port and port **C** is opened. In the same time the second port is shut off. When the pressure is supplied to the second

collinear port, the first port is shut off and pressure is given to port **C**. Using of the 3UZZE6 valve enable supplying of the hydraulic receiver from two independent systems.

### SCHEMES

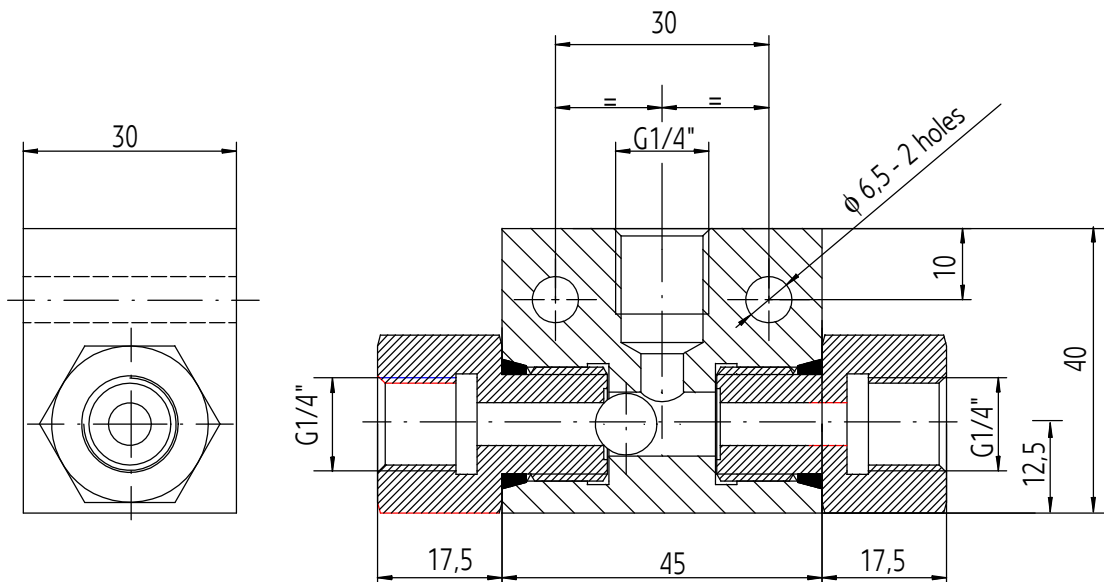
Graphical symbol



### TECHNICAL FEATURES

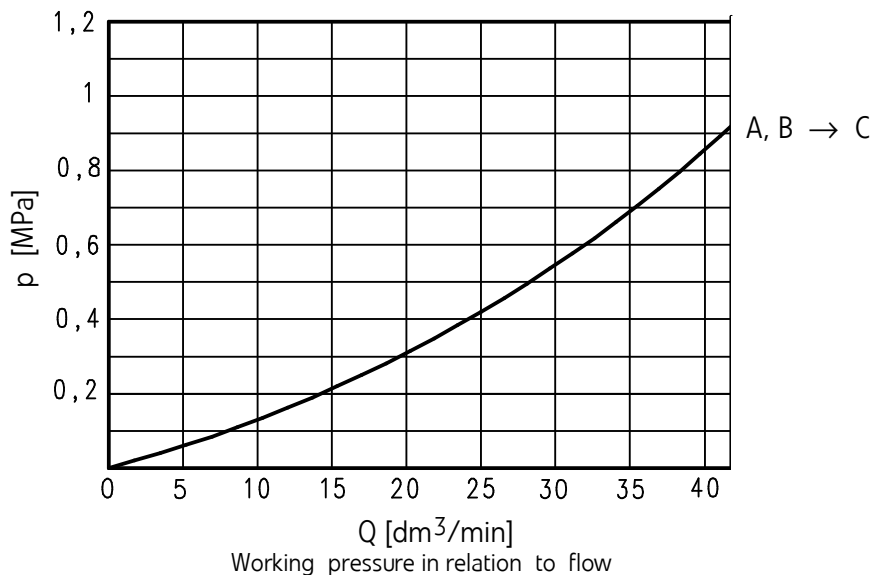
Hydraulic fluid	Mineral oil or phosphate ester
Nominal fluid viscosity	37 mm <sup>2</sup> /s at temperature 55 °C
Viscosity range	2,8 - 328 mm <sup>2</sup> /s
Optimum working temperature ( fluid in a tank )	40 - 55 °C
Fluid temperature range	- 30 - 70 °C
<b>Required fluid filtration</b>	<b>16 μm</b>
Recommended fluid filtration	10 μm
<b>Maximum working pressure</b>	<b>29 MPa</b>
Weight	0,170 kg

## OVERALL DIMENSIONS



## PERFORMANCE CURVES

measured at  $v = 41 \text{ mm}^2/\text{s}$  and  $t = 50^\circ\text{C}$



## HOW TO ORDER

Orders coded in the way showed below should be forwarded to the manufacturer.

Coding example : 3 UZZE 6 - 02

PONAR Wadowice S.A.  
 ul. Wojska Polskiego 29  
 34-100 Wadowice  
 tel. +48 33 823 44 41 - 45  
 fax. +48 33 823 41 69  
[www.ponar-wadowice.pl](http://www.ponar-wadowice.pl)

