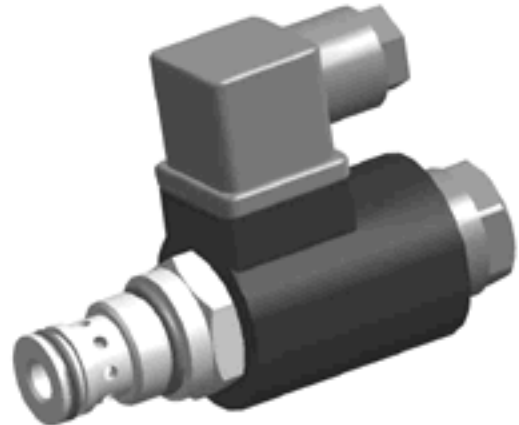


APPLICATION

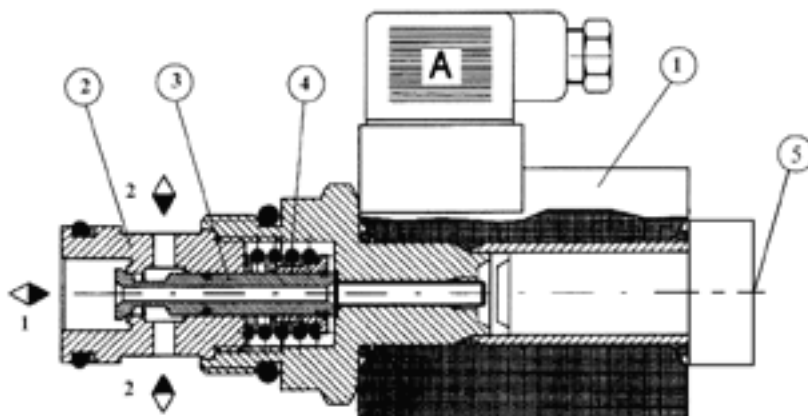
Two-way direct acting double lock normally closed poppet style solenoid cartridge valves type 2URED 6 are designed for application requiring extremely fast response times and virtually zero internal leakage.



DESCRIPTION OF OPERATION

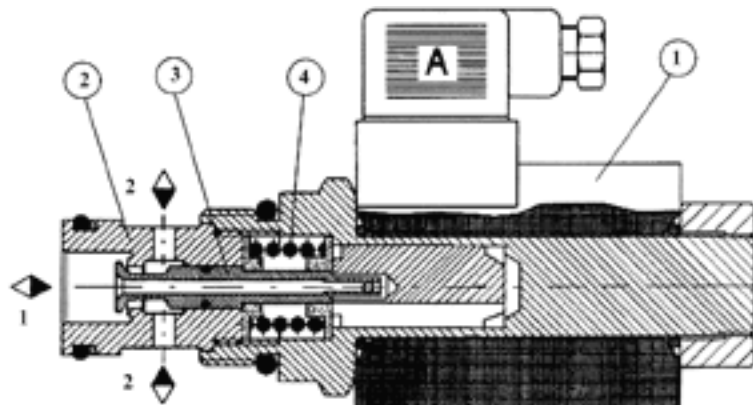
SOLENOID VALVES 2 URED 6 - C5

When the coil is de-energized the poppet (3) is spring (4) and emergency button (5) biased onto its seat, closing the valve. Flow is blocked in both direction independent from pressure on ports A and B. When the coil is energized the push type solenoid (1) overcomes spring forces (4) and lifts the poppet (3) to allows flow to pass in both direction.



SOLENOID VALVES 2 URED 6 - C1

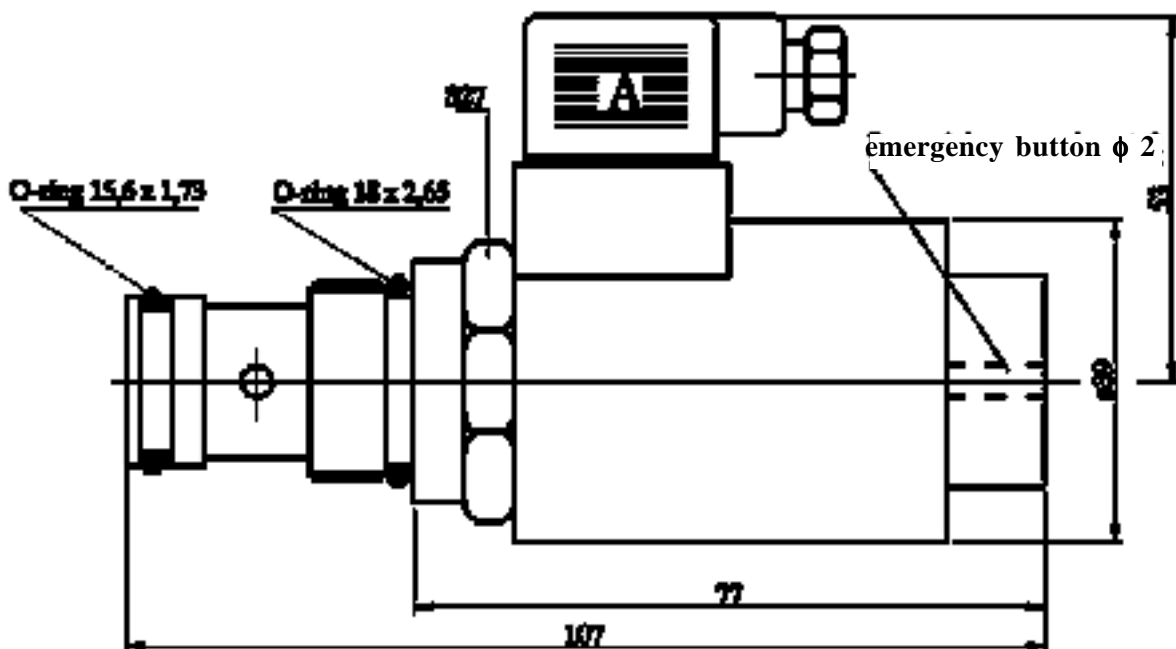
When the coil is de-energized the poppet (3) is spring (4) biased onto its seat, closing the valve. Flow is blocked in both direction independent from pressure on ports A and B. When the closed is energized the push type solenoid (1) overcomes spring forces (4) and lifts the poppet (3) to allows flow to pass in both direction.



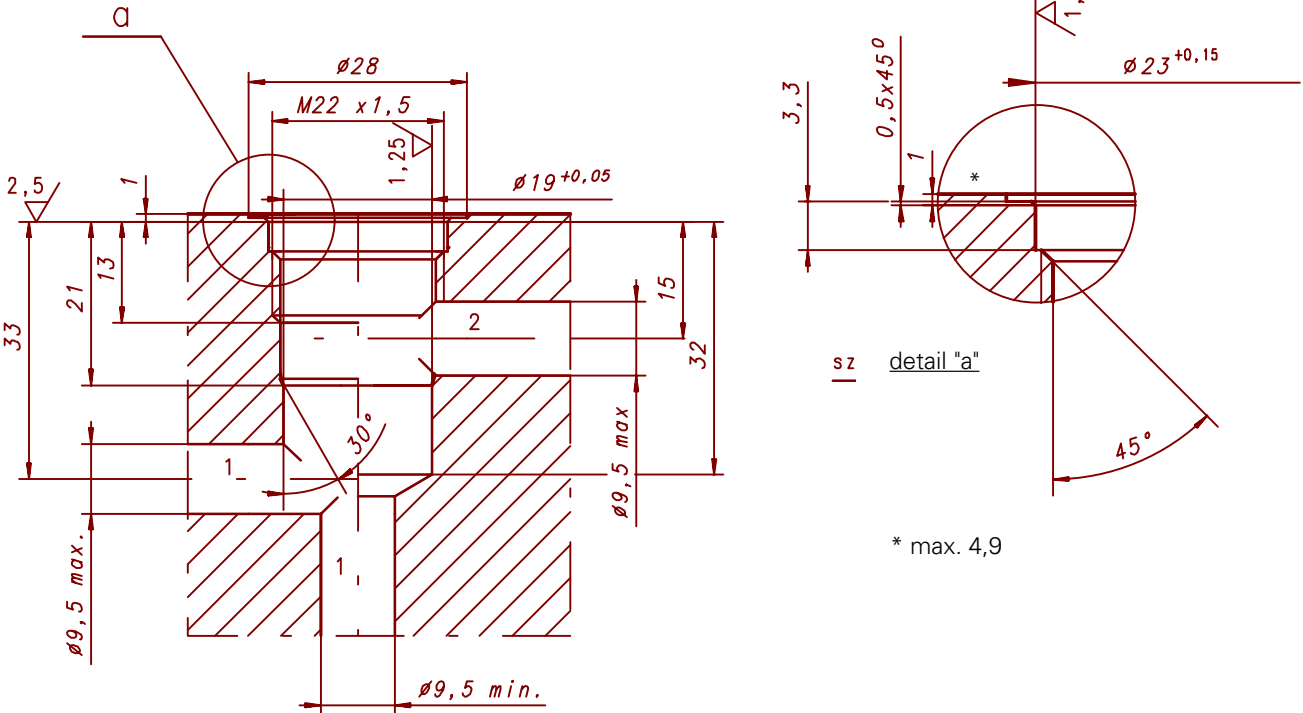
TECHNICAL DATE

Working fluid	Mineral oil
Nominal fluid viscosity	37 mm ² / s at temperature 328 K
Viscosity range	2,8 up to 380 mm ² / s
Optimum working temperature range	313 up to 328 K
Fluid temperature range	243 up to 343 K
Required fluid filtration	16 µm
Recommended fluid filtration	10 µm
Nominal working pressure 1	21 MPa
Nominal working pressure 2	29 MPa
Power requirement	26 W
Weight	~ 0,45 kg

OVERALL AND CONNECTION DIMENSIONS

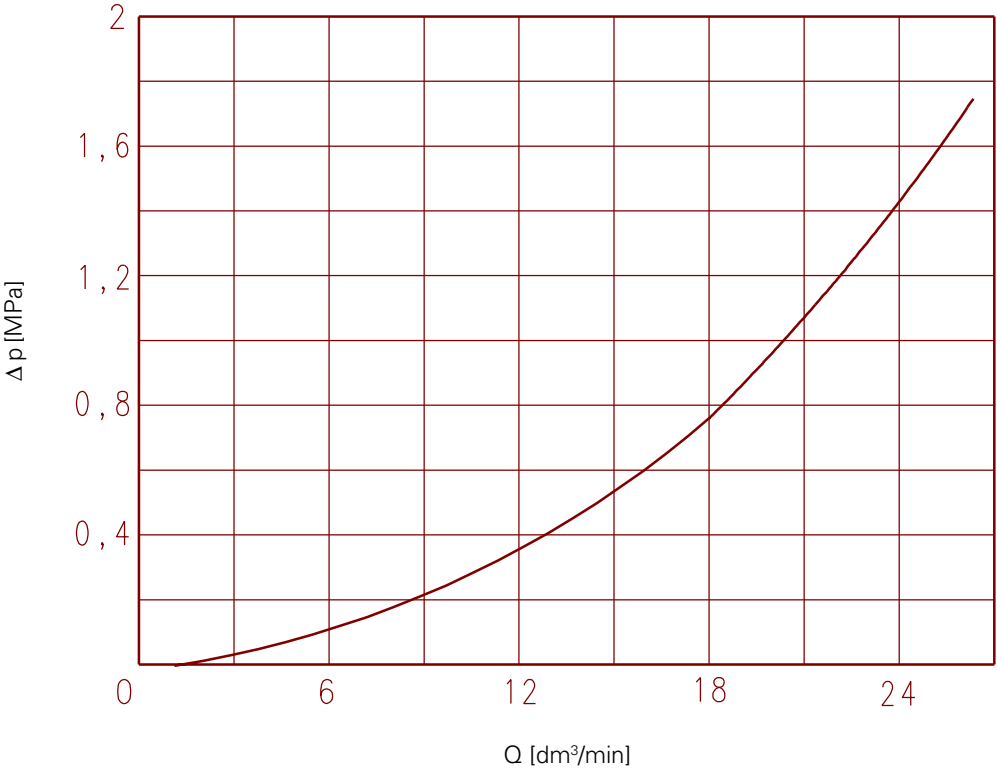


DIMENSIONS OF CAVITY



Tightening torque of valve cartridge - 80 Nm
Mounting position-unrestricted

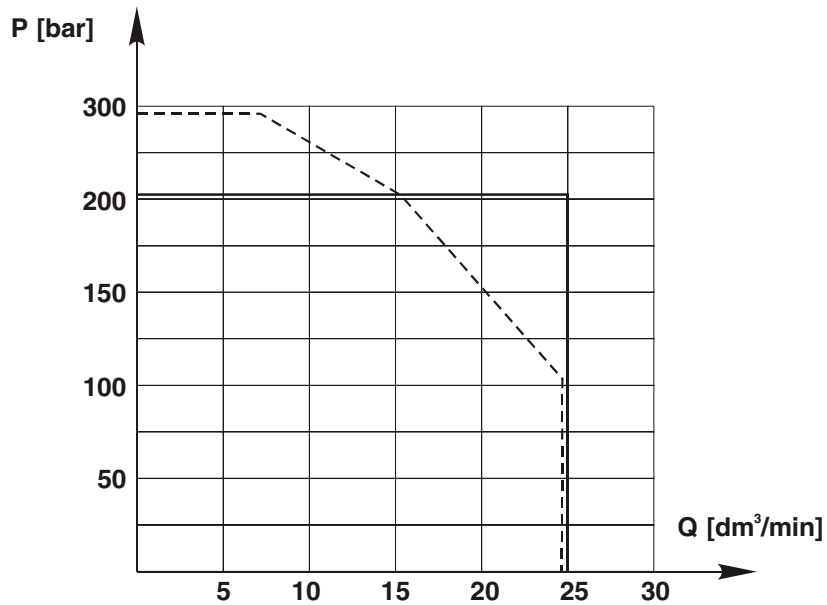
PERFORMANCE CURVES at $v = 41 \text{ mm}^2/\text{s}$ and temp. 323 K



Flow curve

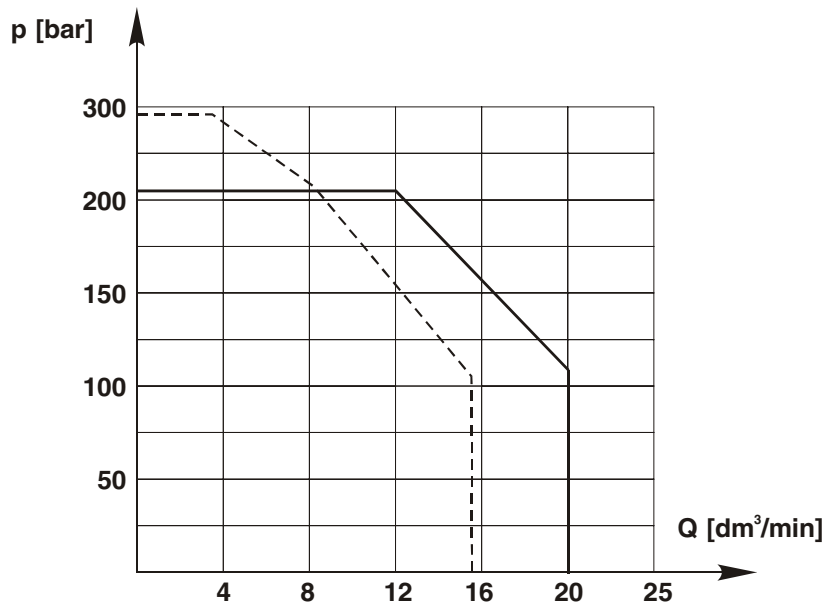
Boundary flow rates in directional valve
2 URED 6 C5

- - from 1 to 2
- - from 2 to 1

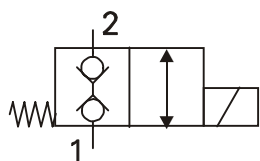


Boundary flow rates in directional valve
2 URED 6 C1

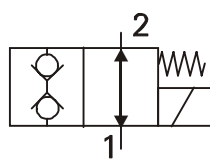
- - from 1 to 2
- - from 2 to 1



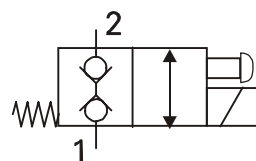
SYMBOL



2 URED 6 ... C5



2 URED 6 ... C1



2 URED 6 ... C5... N

HOW TO ORDER

Orders coded in the way showed below should be forwarded to the manufacturer

2URED 6		12 / 2	M1		Z4	*
---------	--	--------	----	--	----	---

Control spool type
 Spool C1 = C1
 Spool C5 = C5

Series number
 12 = 12
 (12 - 19) = installation and connection dimension unchanged

Number fo working position
 Two position valve = 2

Kind of cavity
 Cavity M22x1,5 = M1

Voltage for solenoid
 DC voltage 12V = G12
 DC voltage 24V = G24
 AC voltage 110V - 50Hz plug with rectifier = W110 R
 AC voltage 220V - 50Hz plug with rectifier = W220 R

Emergency control
 Without emegency control = no destignation
 With emergency control = N
 (for version C5 only)

Electrical connection
 Angled plug Z4 = Z4

Sealing
 oilproof = no destignation
 viton = V

Further requirements to be added in text (to agree with the manufacturer)

CODING EXAMPLE:
 2 URED 6 C5 12/2 M1 G12N Z4 V

PONAR WADOWICE S.A.
ul. Wojska Polskiego 29
34-100 Wadowice
tel. 033/ 823 39 43, 823 30 41
fax 033/ 873 48 80
e-mail: ponar@ponar-wadowice.pl

