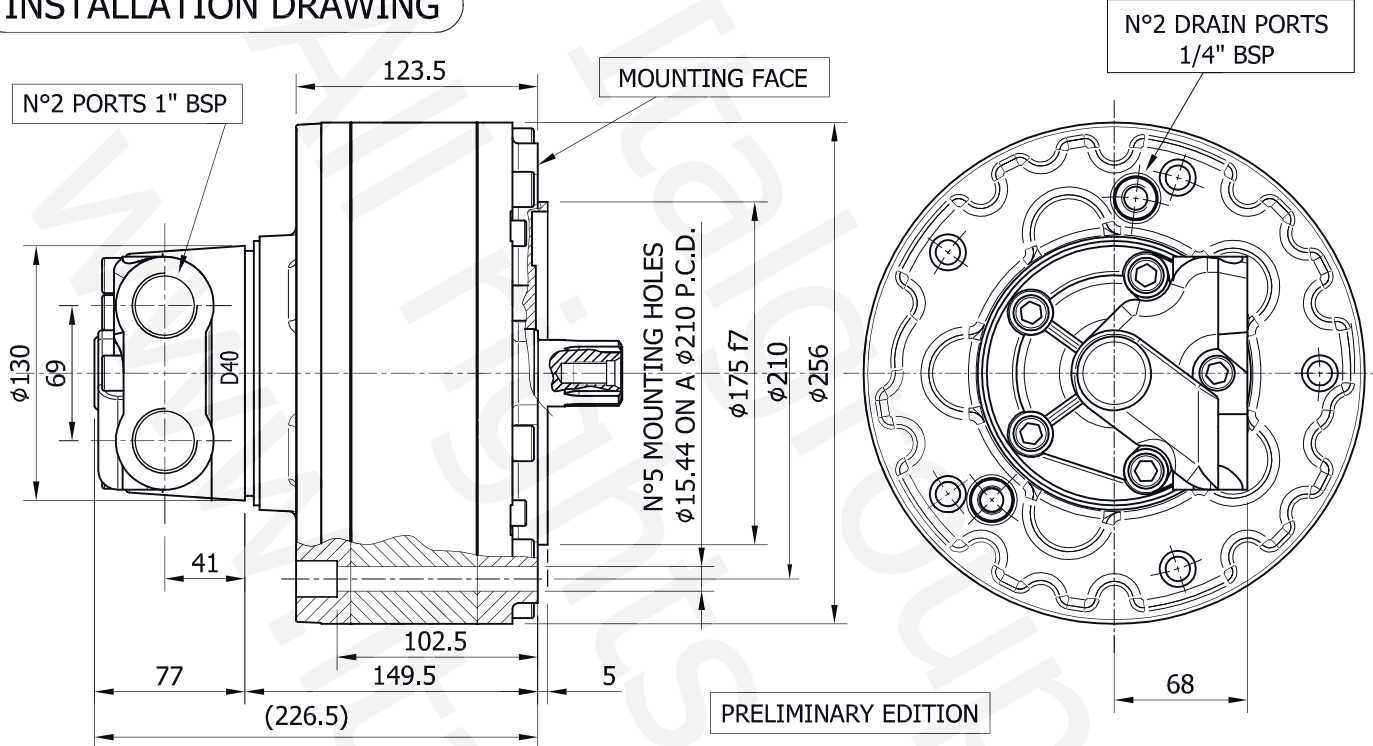


INSTALLATION DRAWING



TECHNICAL DATA

		100	150	175	200	250	300	350
DISPLACEMENT	[cc]	98	154	173	200	243	289	315
SPECIFIC TORQUE	[Nm/bar]	1.57	2.45	2.74	3.2	3.88	4.61	5.01
MAX. CONT. PRESSURE	[bar]	250	250	250	250	250	250	250
MAX. INT. PRESSURE	[bar]	320	320	320	320	320	320	320
PEAK PRESSURE	[bar]	350	350	350	350	350	350	350
MAX. CONT. SPEED	[rpm]	1000	700	700	600	600	500	450
PEAK SPEED (**)	[rpm]	1200	900	900	800	800	700	650
MAX. CONT. POWER (***)	[kW]	40	40	40	40	40	40	40
PEAK POWER (****)	[kW]	60	60	60	60	60	60	60
MAX. CASE PRESSURE	[bar]	6	6	6	6	6	6	6
DRY WEIGHT	[kg]	34	34	34	34	34	34	34
TEMPERATURE RANGE (*)	[°C]	-30÷70	-30÷70	-30÷70	-30÷70	-30÷70	-30÷70	-30÷70

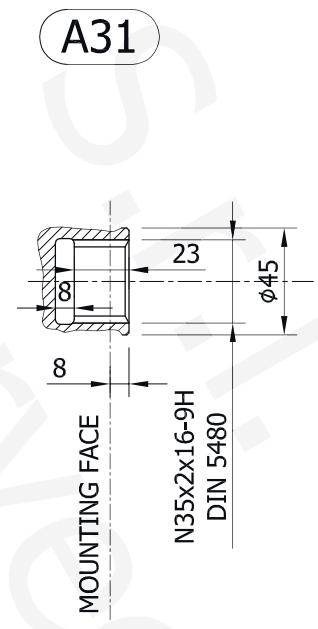
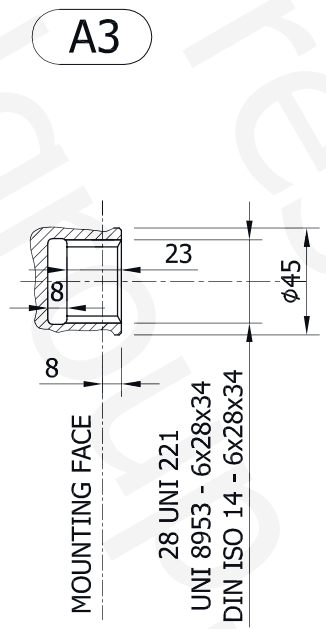
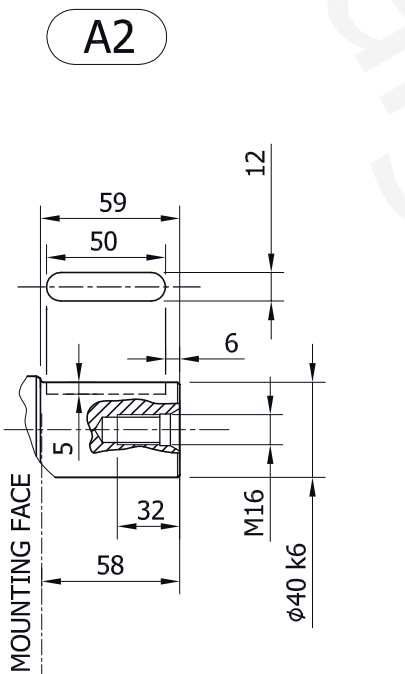
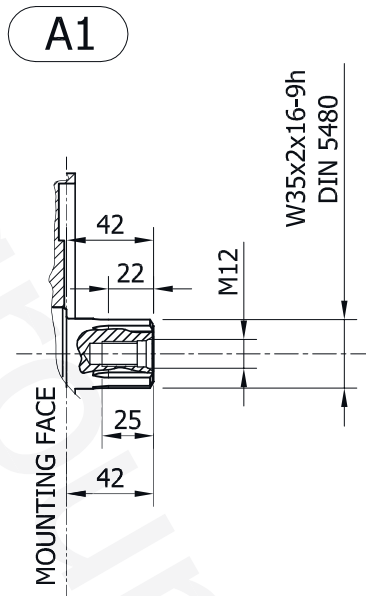
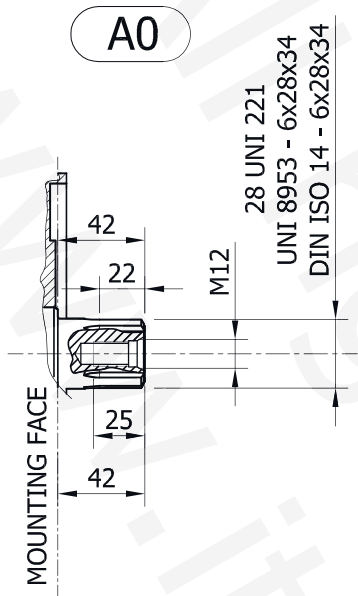
(*) Please refer to the "Hydraulic fluid recommendations"

(**) Do not exceed maximum power

(***) For motor operation with a continuous duty cycle at maximum continuous power the motor flushing is required

(****) For motor operation at peak power flushing is usually required. For more information please contact our technical department

SHAFT CONFIGURATIONS



SPLINE BILLETS

SB14

