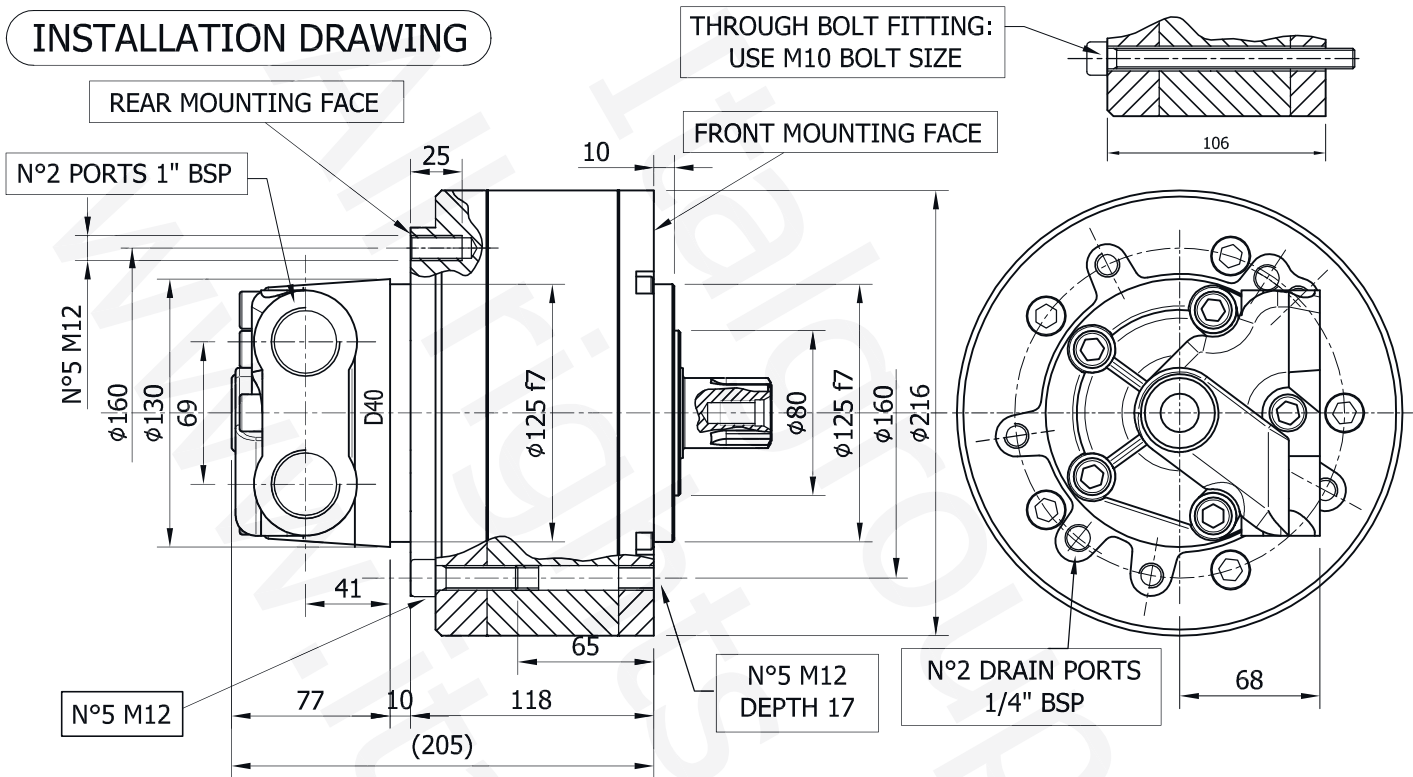


INSTALLATION DRAWING



TECHNICAL DATA

		40	60	75	90	110	130	150	170	200	250
DISPLACEMENT	[cc]	40	60	74	91	115	129	150.7	166	191	226
SPECIFIC TORQUE	[Nm/bar]	0.62	0.97	1.2	1.4	1.84	2.05	2.4	2.65	3.04	3.6
MAX. CONT. PRESSURE	[bar]	250	250	250	250	250	250	250	250	250	250
MAX. INT. PRESSURE	[bar]	320	320	320	320	320	320	320	320	320	320
PEAK PRESSURE	[bar]	350	350	350	350	350	350	350	350	350	350
MAX. CONT. SPEED	[rpm]	1200	1200	1200	1000	850	850	850	750	750	600
PEAK SPEED (**)	[rpm]	1400	1400	1400	1300	1100	1100	1100	1000	1000	800
MAX. CONT. POWER (***)	[kW]	22	22	35	35	35	35	35	35	35	35
PEAK POWER (****)	[kW]	35	35	55	55	55	55	55	55	55	55
MAX. CASE PRESSURE	[bar]	6	6	6	6	6	6	6	6	6	6
DRY WEIGHT	[kg]	30	30	30	30	30	30	30	30	30	30
TEMPERATURE RANGE (*)	[°C]	-30÷70	-30÷70	-30÷70	-30÷70	-30÷70	-30÷70	-30÷70	-30÷70	-30÷70	-30÷70

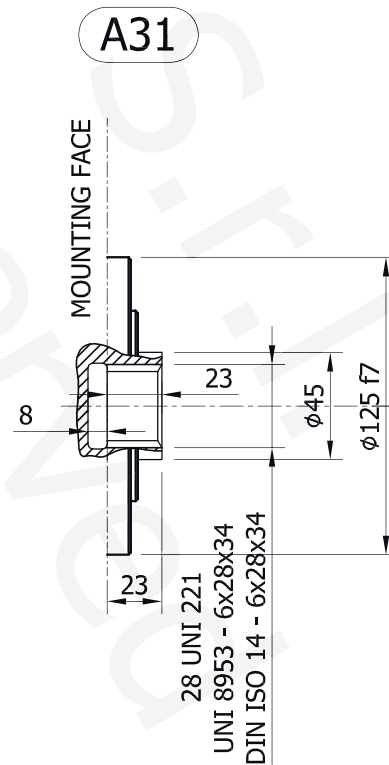
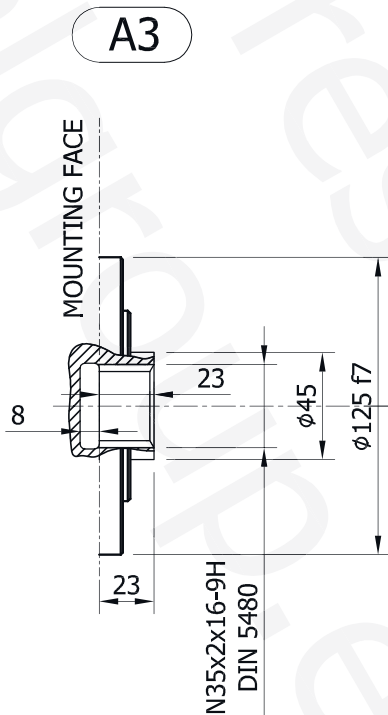
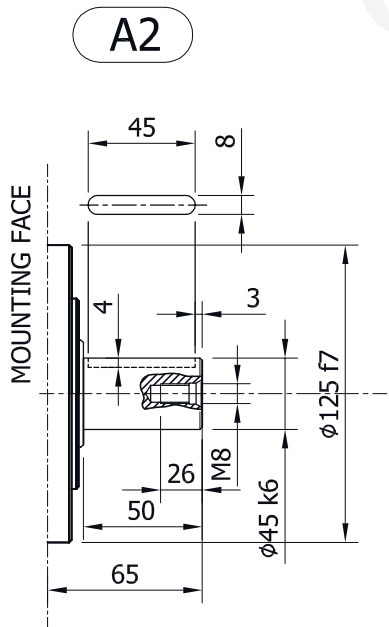
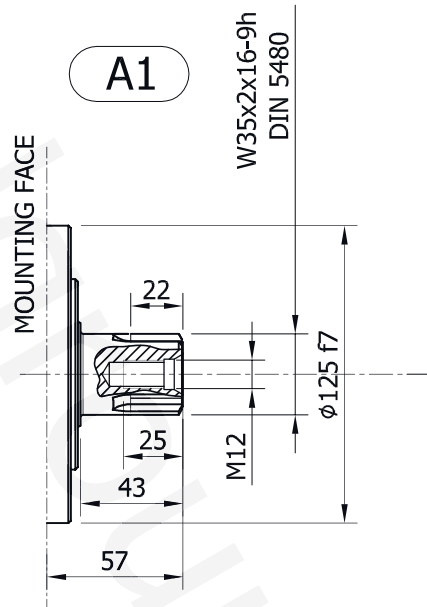
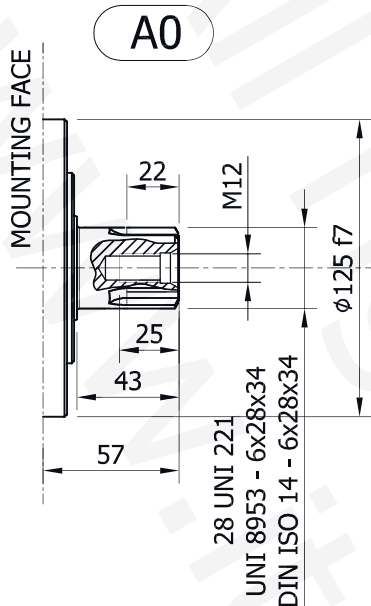
(*) Please refer to the "Hydraulic fluid recommendations"

(**) Do not exceed maximum power

(***) For motor operation with a continuous duty cycle at maximum continuous power the motor flushing is required

(****) For motor operation at peak power flushing is usually required. For more information please contact our technical department

SHAFT CONFIGURATIONS



SPLINE BILLETS

SB14

