
ITALGROUP DUAL DISPLACEMENT MOTORS

IAC SERIES

H3 MODEL

IAC 500

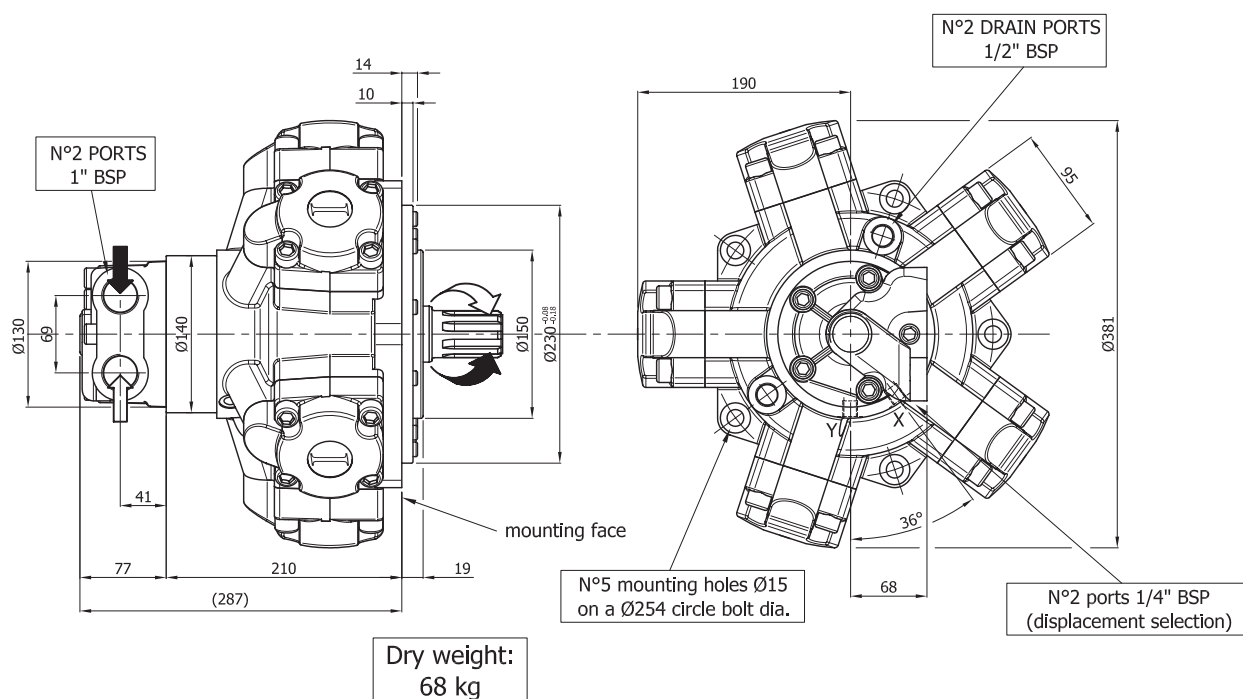
IAC 500/B30

INDEX

IAC 500 H3 D40 - - - - -	<i>Pag.</i>	24
IAC 500/B30 H3 D40 - - - - -	"	25
IAC 500 H3 D47 C3 SV - - - - -	"	26
IAC 500/B30 H3 D47 C3 SV - - - - -	"	27
IAC 500 H3 D47 C3-24 SV - - - - -	"	28
IAC 500/B30 H3 D47 C3-24 SV - - - - -	"	29
ORDERING INSTRUCTIONS - - - - -	"	30

SIZE

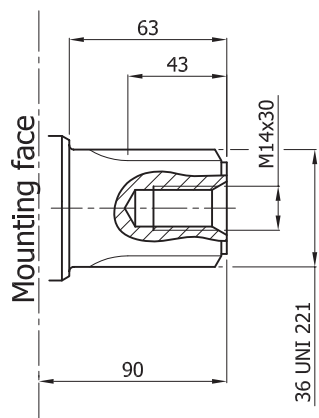
IAC 500 H3 D40



SHAFT

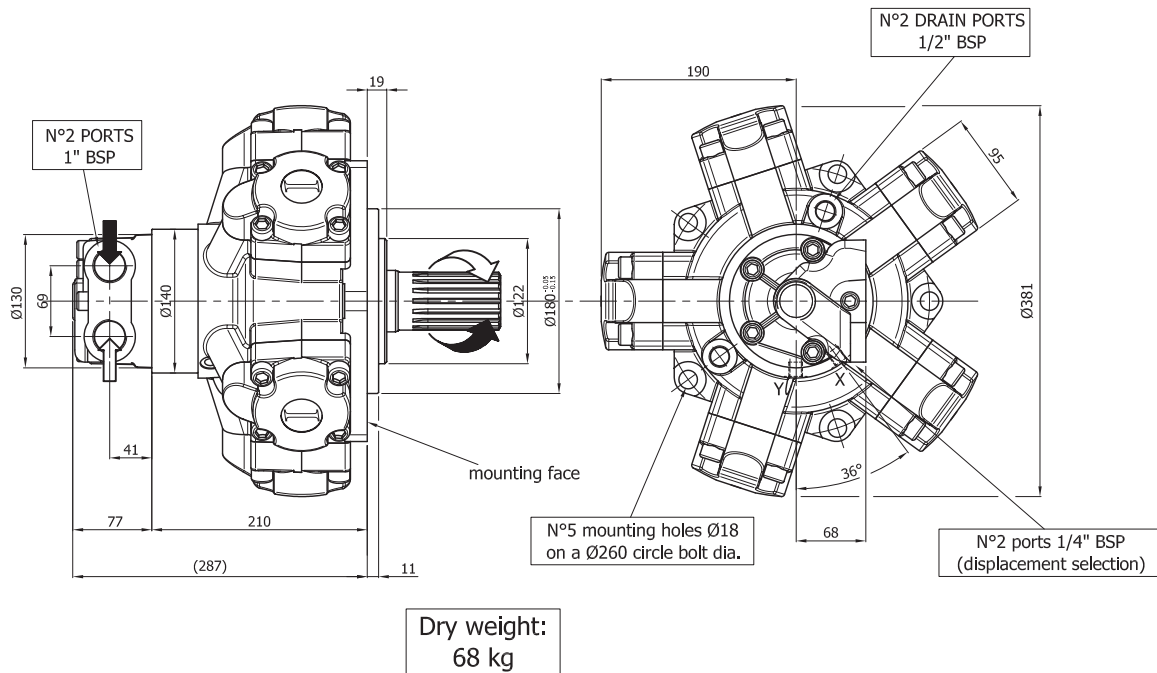
IAC 500 H3 D40

A0: Standard splined shaft



SIZE

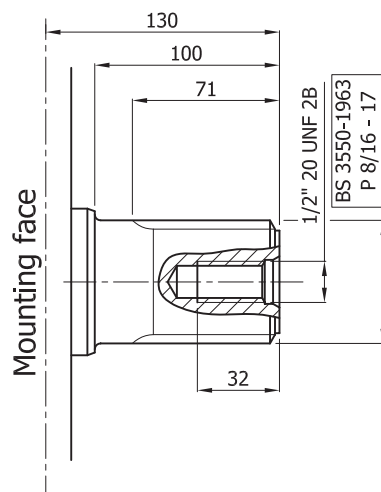
IAC 500/B30 H3 D40



SHAFT

IAC 500/B30 H3 D40

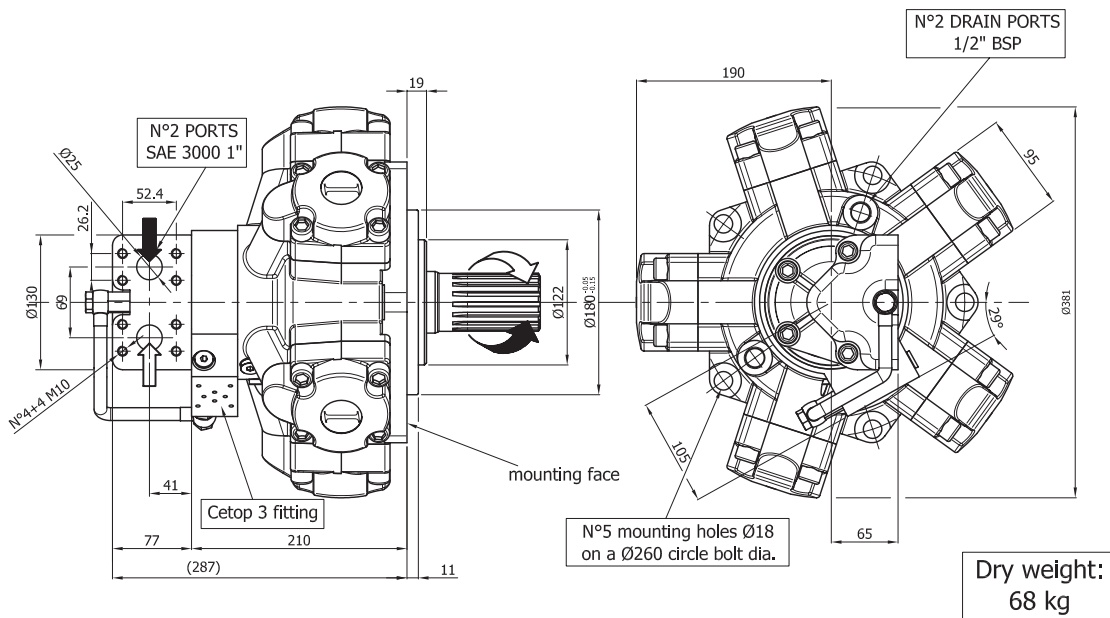
A1: Splined shaft



INTERCHANGEABLE WITH HMC30

SIZE

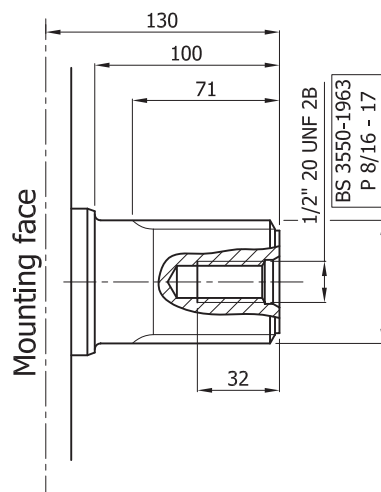
IAC 500/B30 H3 D47 C3 SV



SHAFT

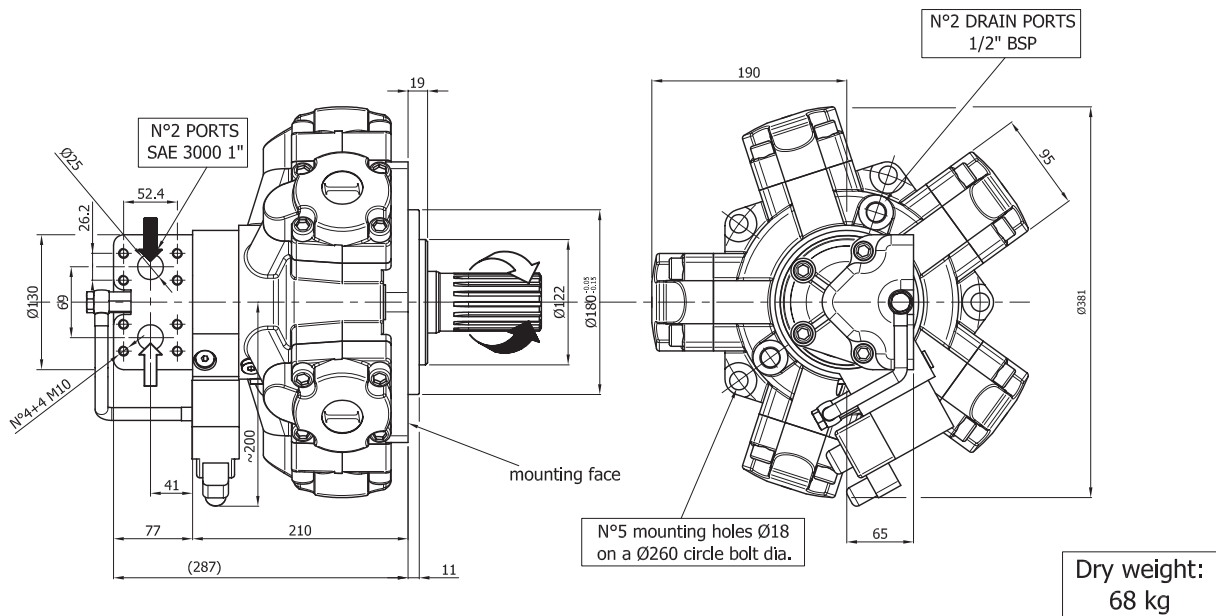
IAC 500/B30 H3 D47 C3 SV

A1: Splined shaft



SIZE

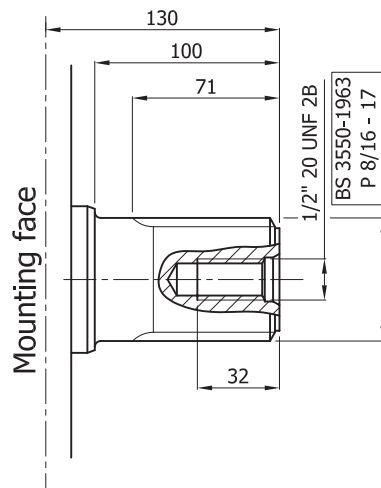
IAC 500/B30 H3 D47 C3-24 SV



SHAFT

IAC 500/B30 H3 D47 C3-24 SV

A1: Splined shaft



ORDERING INSTRUCTIONS

H3

	IAC - -	/-	H1	A -	D - -	- - -	- - -	SV	SB -	- - -	- - -	- - -
Motor model	IAC 500											
Motor interchangeability		/B30										
Housing			H3									
Shaft												
				A0	standard splined shaft							
				A1	splined shaft							
Distributor												
					D40	(1" BSP)						
					D47	(SAE 3000 1")						
Tachometer (optional)												
					TA							
					TB							
					EST							
					EST.30							
					J	TACHOMETER PREDISPOSITION						
Cetop 3 fitting (optional, available only with D47)												
					C3	(Cetop 3 fitting)						
					C3-12	(Cetop 3 fitting, with 12V DC valve included)						
					C3-24	(Cetop 3 fitting, with 24V DC valve included)						
Shuttle valve (optional)												
					SV	(available only with D47 distributor)						
Spline billet (optional)												
					SB3	(for A0 splined shaft)						
Valves (optional)												
					RVDA							
					OVSA	(see valve section for details and complete ordination code)						
					OVDA							
					ORVSA							
					RVDAP							
Special features (optional)												
					01	(Viton seals)						
					02	(Oxynit treatment on the external motor surface)						
					03	(Nitemper treatment on cylinder bores)						
Displacements												
					MAX-MIN	(MAXIMUM AND MINIMUM DISPLACEMENT OF MOTOR)						

IAC 500 H3 Max displacement range: 492-255 cc/Rev
 Min displacement range: 344-98 cc/Rev

Different displacements on request

EXAMPLE: IAC.500/B30.H3.A1.D47.C3-24.01.492-197
 IAC.500.H3.A0.D40.J.492-147
 IAC.500/B30.H3.A1.D47.C3.393-147